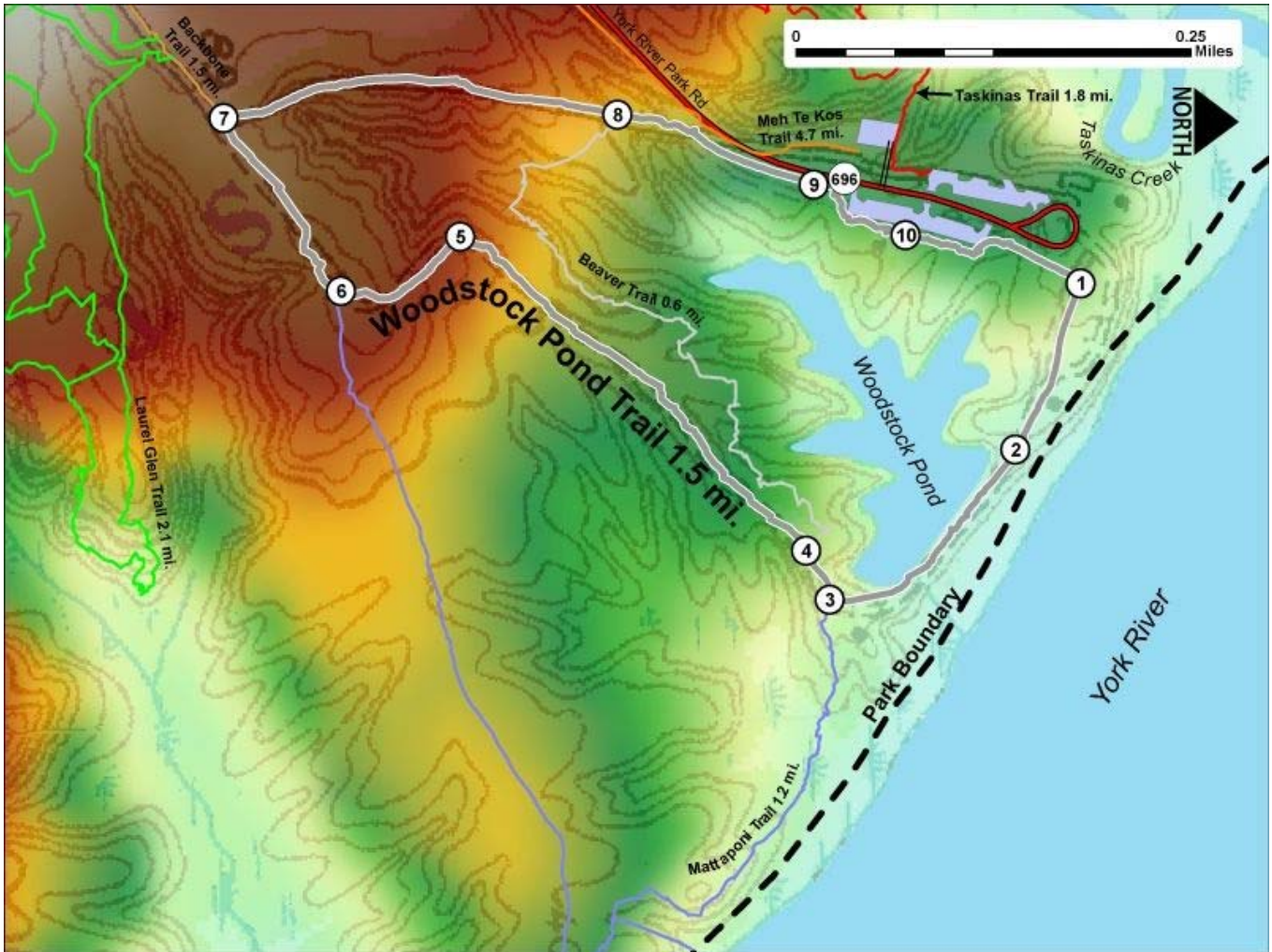


Printed from VirginiaOutdoors.net
 York River State Park
 Woodstock Pond Trail Map - Blaze Color: Gray



1. GPS: Lat. 37° 24.858, Lon. 76° 42.775
Trailhead across from entry to Visitor Center
2. GPS: Lat. 37° 24.82, Lon. 76° 42.661
Fishing access to Woodstock Pond
3. GPS: Lat. 37° 24.716, Lon. 76° 42.56
Intersection with Mataponi Trail
4. GPS: Lat. 37° 24.704, Lon. 76° 42.594
Intersection with Beaver Trail
5. GPS: Lat. 37° 24.518, Lon. 76° 42.815
Sharp turn in trail
6. GPS: Lat. 37° 24.45, Lon. 76° 42.779
Intersection with Mataponi Trail
7. GPS: Lat. 37° 24.387, Lon. 76° 42.9
Intersection with Backbone Trail
8. GPS: Lat. 37° 24.604, Lon. 76° 42.898
Intersection with Beaver Trail
9. GPS: Lat. 37° 24.719, Lon. 76° 42.847
Trail passes Contact Station
10. GPS: Lat. 37° 24.762, Lon. 76° 42.811
Trail passes Restrooms and Playground

This project made possible in part by a grant from:

