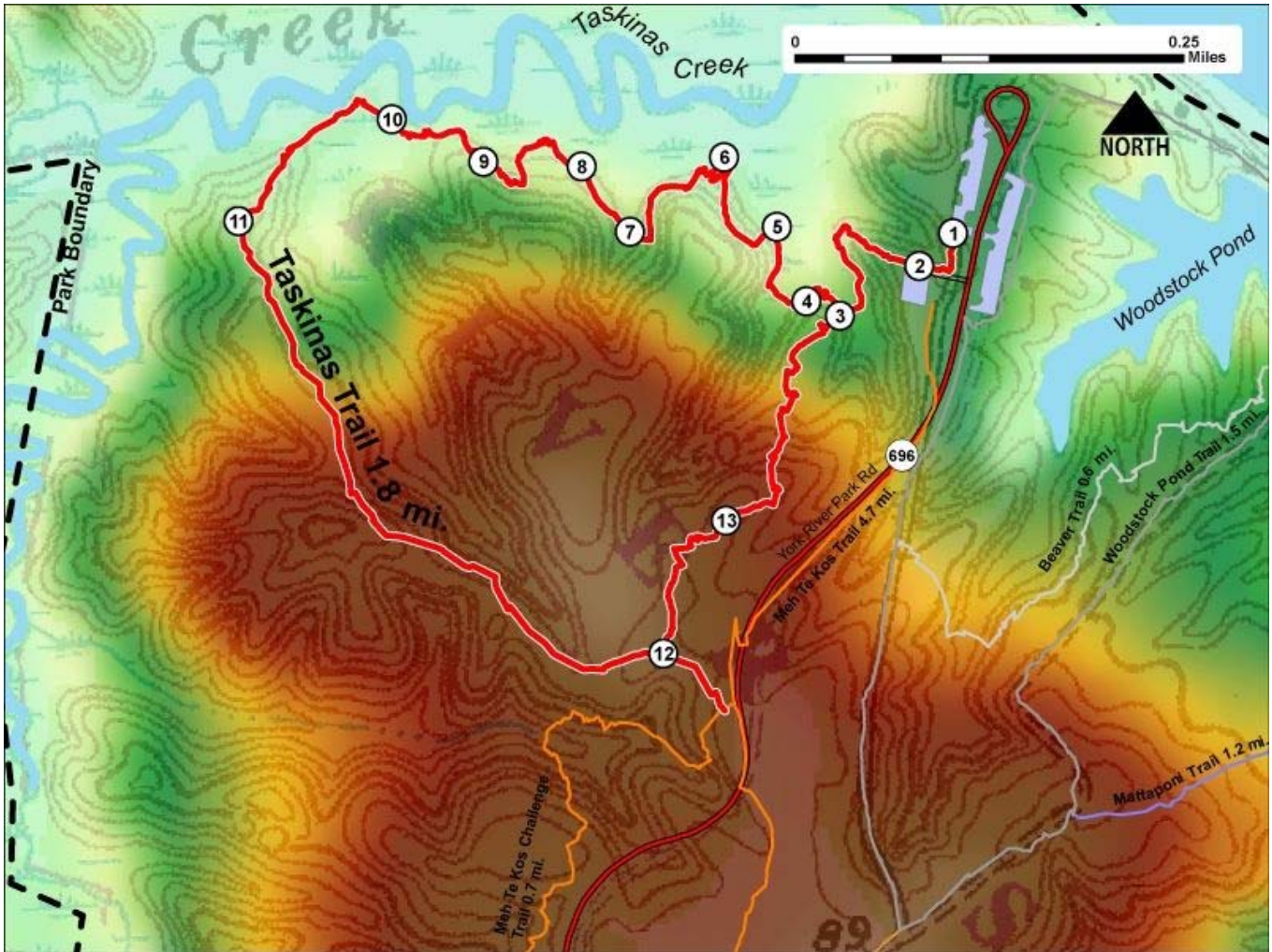


Printed from VirginiaOutdoors.net  
 York River State Park  
 Taskinas Trail Map - Blaze Color: Red



1. GPS: Lat. 37° 24.776, Lon. 76° 42.854  
East Trailhead at Visitor Center Parking Area
2. GPS: Lat. 37° 24.758, Lon. 76° 42.878  
Trail access from Trail Parking near Contact Station
3. GPS: Lat. 37° 24.731, Lon. 76° 42.935  
Fork in trail – North to Taskinas Creek. South to Meh Te Kos Trail connector and southern portion of Taskinas Loop. East to Visitor Center.
4. GPS: Lat. 37° 24.739, Lon. 76° 42.958  
Bridge on Trail
5. GPS: Lat. 37° 24.781, Lon. 76° 42.978  
Overlook #1
6. GPS: Lat. 37° 24.821, Lon. 76° 43.014  
Overlook #2
7. GPS: Lat. 37° 24.78, Lon. 76° 43.081  
Boardwalk
8. GPS: Lat. 37° 24.817, Lon. 76° 43.114  
Overlook #3 Remnants of historic Plank Road visible near here.
9. GPS: Lat. 37° 24.821, Lon. 76° 43.183  
Overlook #4 Remnants of historic Plank Road visible here.
10. GPS: Lat. 37° 24.846, Lon. 76° 43.247  
Bridge and Boardwalk over marsh area
11. GPS: Lat. 37° 24.79, Lon. 76° 43.356  
Bench alongside trail. Trail surface changes from sand to gravel.
12. GPS: Lat. 37° 24.544, Lon. 76° 43.063  
Fork in trail – SE to Meh Te Kos Trail. North returns to trailhead parking area
13. GPS: Lat. 37° 24.617, Lon. 76° 43.018

Trail crosses clearing with view to York River Park Road  
This project made possible in part by a grant from:

