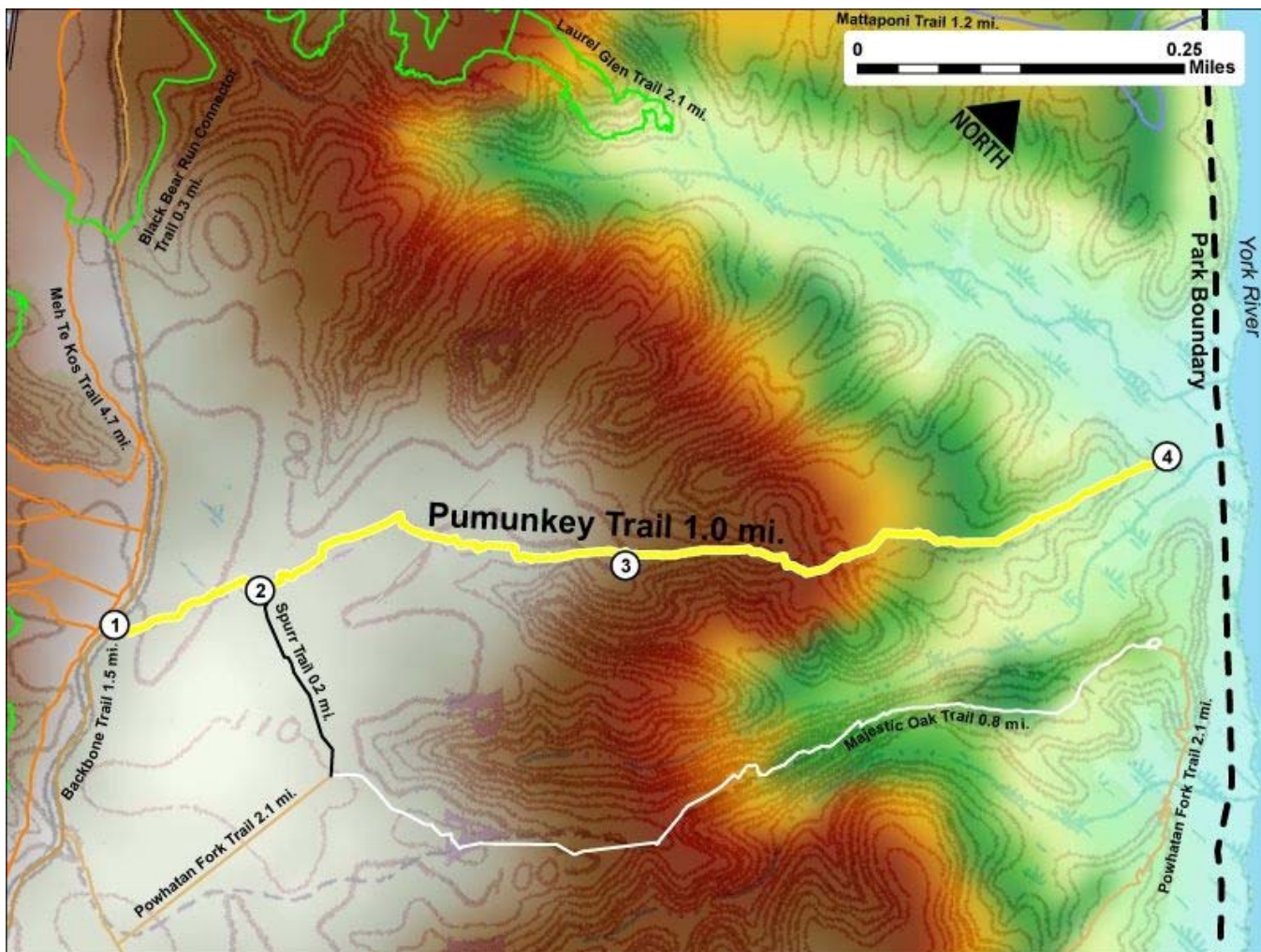


Printed from VirginiaOutdoors.net
York River State Park
Pumunkey Trail Map - Blaze Color: Yellow



1. GPS: Lat. 37° 23.843, Lon. 76° 42.621
West Trailhead Intersection with Backbone Trail
2. GPS: Lat. 37° 23.927, Lon. 76° 42.554
Intersection with West Trailhead for Spurr Trail
3. GPS: Lat. 37° 24.114, Lon. 76° 42.356
Halfway point on trail
4. GPS: Lat. 37° 24.41, Lon. 76° 42.086
Pumunkey Trail ends at York River Observation Tower

This project made possible in part by a grant from:

