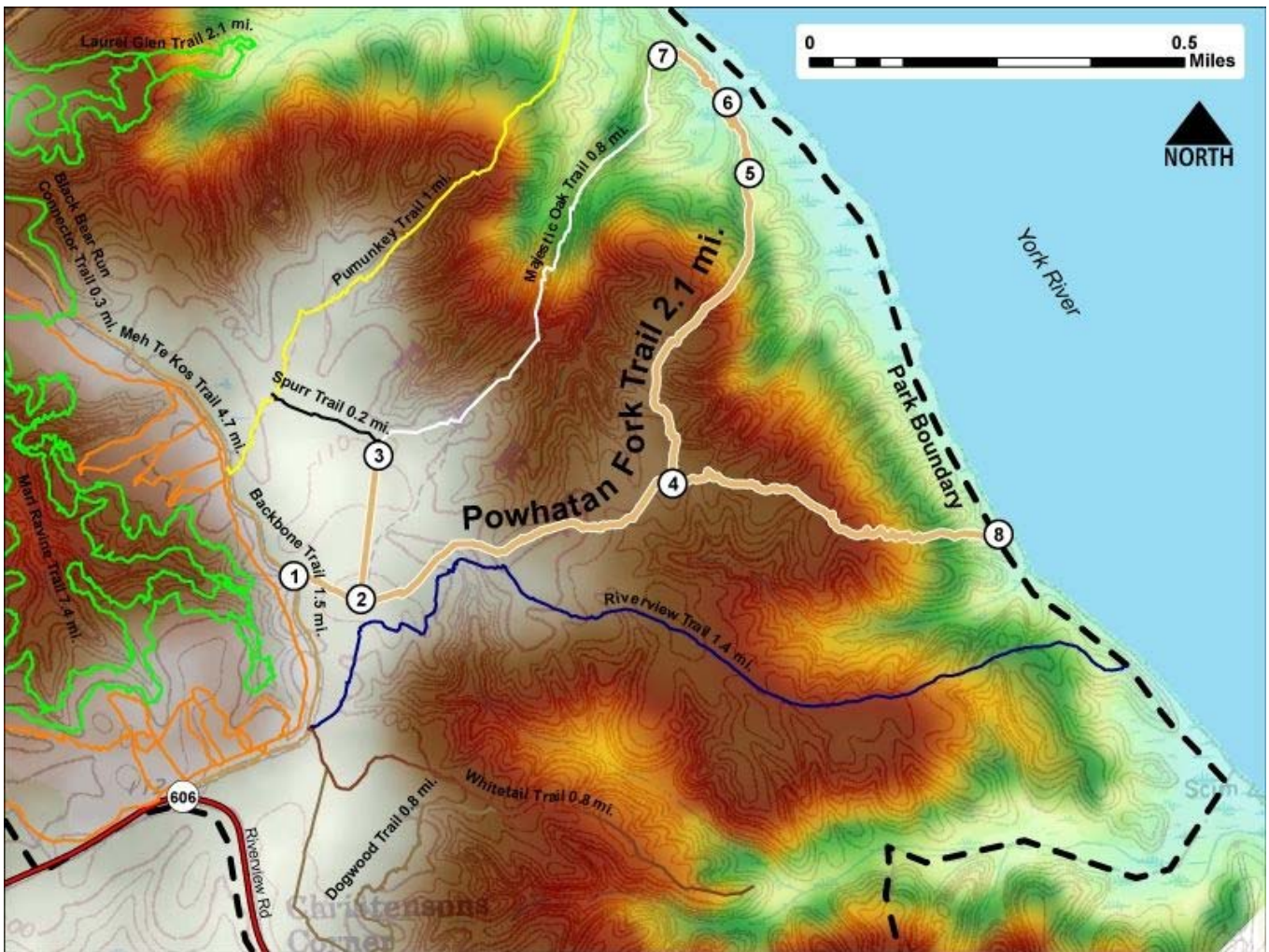


Printed from VirginiaOutdoors.net
York River State Park
Powhatan Fork Trail Map - Blaze Color: Beige



1. GPS: Lat. 37° 23.719, Lon. 76° 42.531
West Trailhead Intersection with Backbone Trail
2. GPS: Lat. 37° 23.691, Lon. 76° 42.435
Intersection with Majestic Oak and Spurr Trail Connector
3. GPS: Lat. 37° 23.872, Lon. 76° 42.404
Spurr Trail Intersects with Powhatan Fork Connector and Majestic Oak Trail
4. GPS: Lat. 37° 23.818, Lon. 76° 41.978
Fork in Trail – North to Majestic Oak Trail – East to York River Overlook
5. GPS: Lat. 37° 24.187, Lon. 76° 41.857
Bench and York River overlook – Caution! No horses past this point
6. GPS: Lat. 37° 24.259, Lon. 76° 41.888
Bridge over marsh
7. GPS: Lat. 37° 24.315, Lon. 76° 41.981
Trail ends and connects to Majestic Oak Trail
8. GPS: Lat. 37° 23.752, Lon. 76° 41.505
Trail ends at cliff and overlook of York River

This project made possible in part by a grant from:

