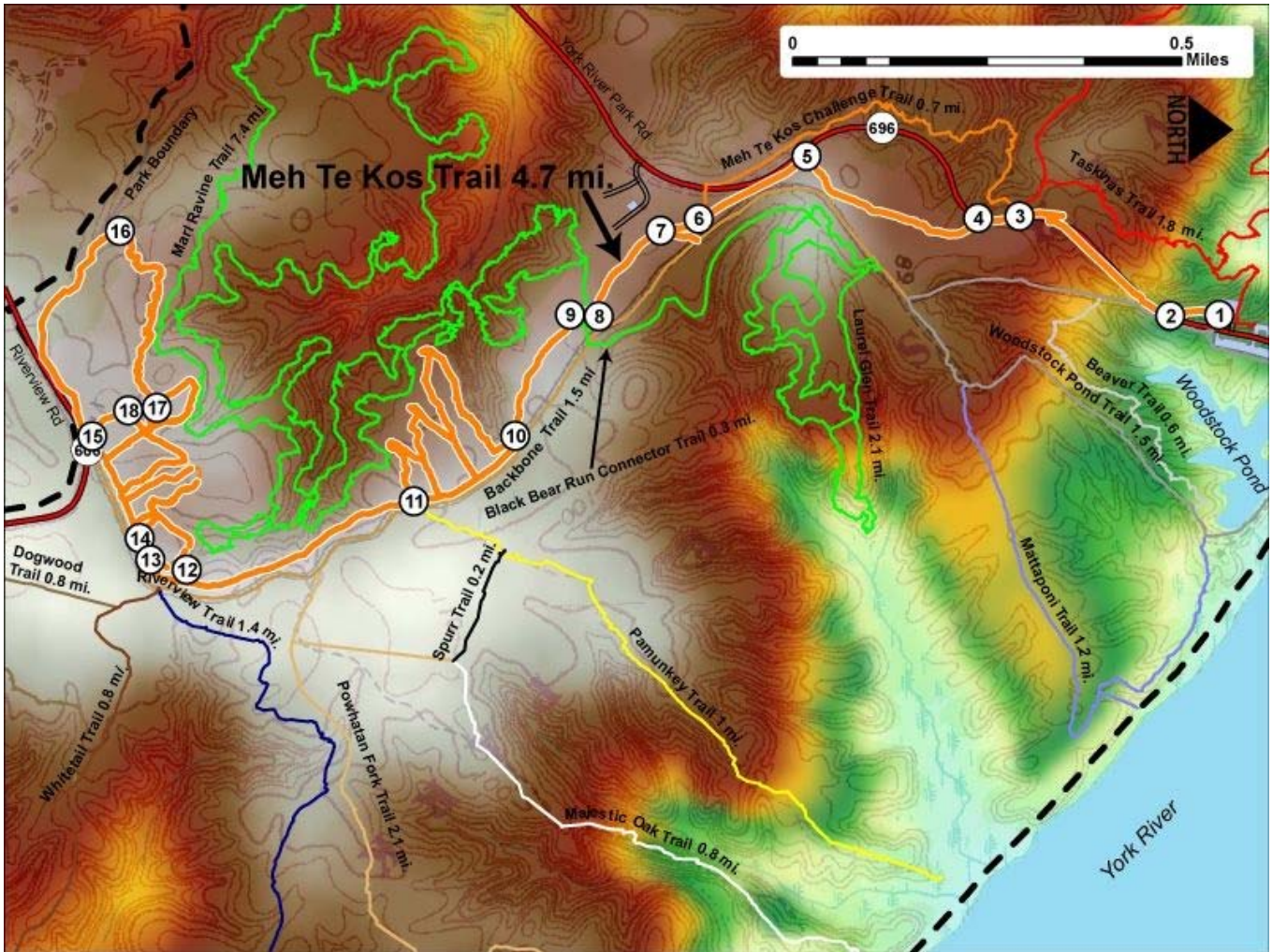


Printed from VirginiaOutdoors.net
 York River State Park
 Meh Te Kos Trail Map - Blaze Color: Orange



1. GPS: Lat. 37° 24.737, Lon. 76° 42.869
North Trailhead at trail parking area near Contact Station
2. GPS: Lat. 37° 24.682, Lon. 76° 42.869
Trail converges with York River Park Road
3. GPS: Lat. 37° 24.515, Lon. 76° 43.013
Intersection with Trailheads for Taskinas and Meh Te Kos Challenge Trails
4. GPS: Lat. 37° 24.469, Lon. 76° 43.011
Trail crosses York River Park Road
5. GPS: Lat. 37° 24.278, Lon. 76° 43.102
Sharp turn near York River Park Road
6. GPS: Lat. 37° 24.156, Lon. 76° 43.017
Intersection with South Trailhead for Meh Te Kos Challenge Trail
7. GPS: Lat. 37° 24.113, Lon. 76° 43.002
Fork in trail East to Backbone Trail connector
8. GPS: Lat. 37° 24.03, Lon. 76° 42.892
Intersection with Marl Ravine access trail (West)
9. GPS: Lat. 37° 24.017, Lon. 76° 42.886
Intersection with Black Bear Run Trailhead (South)
10. GPS: Lat. 37° 23.946, Lon. 76° 42.718
Fork in trail – West to three small connected loops – South to follow main trail
11. GPS: Lat. 37° 23.831, Lon. 76° 42.629
Intersection with trail leading to three small connected loops
12. GPS: Lat. 37° 23.575, Lon. 76° 42.519
Trail makes sweeping turn from North to West
13. GPS: Lat. 37° 23.534, Lon. 76° 42.554

Fork to NE connects trail to series of loop trails West of the point

14. GPS: Lat. 37° 23.523, Lon. 76° 42.584

Short loop connects trail to Backbone Trail

15. GPS: Lat. 37° 23.472, Lon. 76° 42.728

Intersection with series of loop trails North and East from here. Large ending loop West from here.

16. GPS: Lat. 37° 23.507, Lon. 76° 43.016

Westernmost portion of Meh Te Kos Trail

17. GPS: Lat. 37° 23.535, Lon. 76° 42.767

Trail loops to Intersection with itself.

18. GPS: Lat. 37° 23.513, Lon. 76° 42.764

Garden of Friends

This project made possible in part by a grant from:

