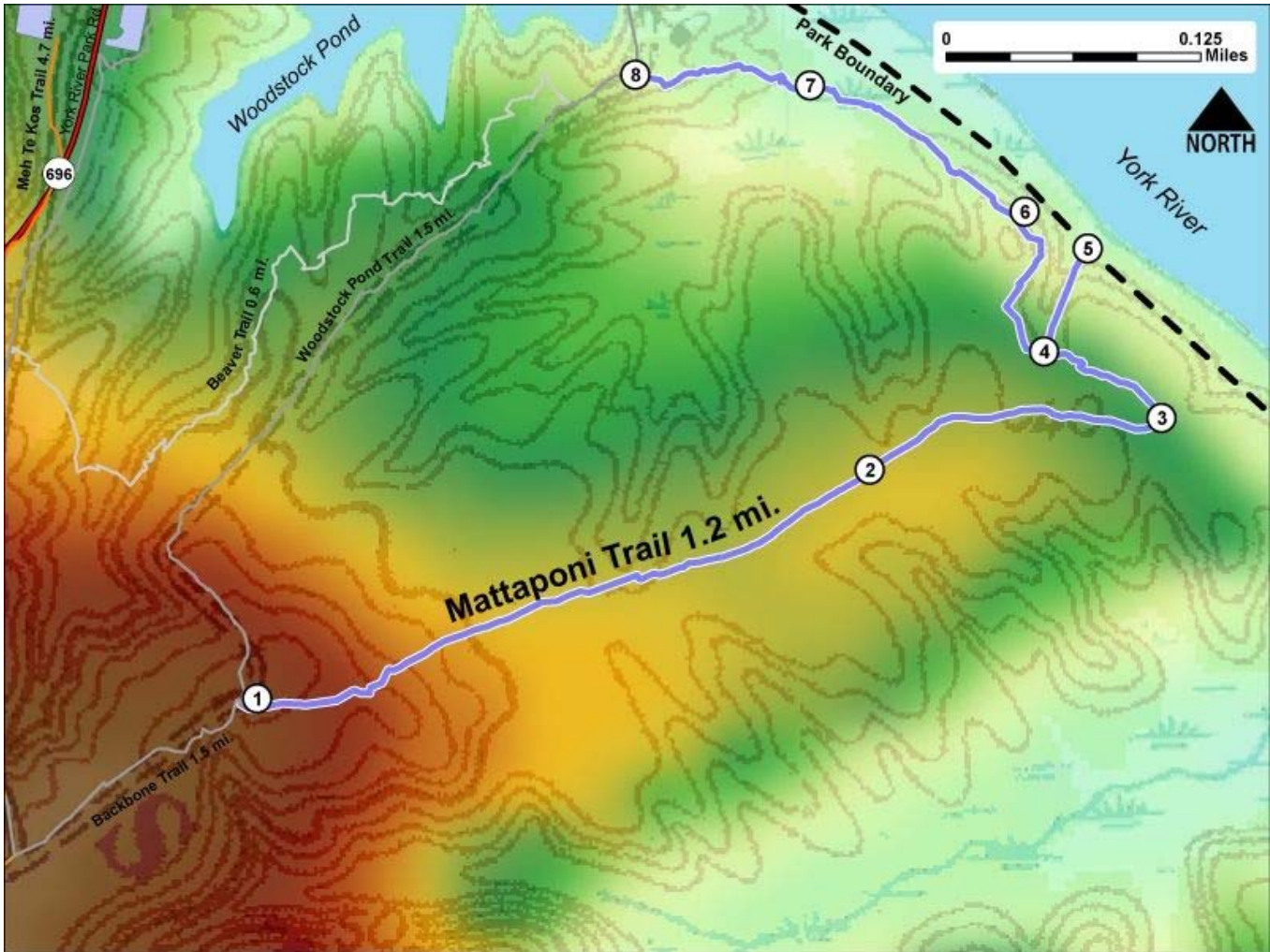


Printed from VirginiaOutdoors.net
York River State Park
Mattaponi Trail Map - Blaze Color: Lt. Blue



1. GPS: Lat. 37° 24.452, Lon. 76° 42.769
 West Trailhead at Intersection with Woodstock Pond Trail. Former site of the Henderson house.
 2. GPS: Lat. 37° 24.545, Lon. 76° 42.438
 Mile Marker .5 - .4 miles to fork leading to Fossil Beach
 3. GPS: Lat. 37° 24.564, Lon. 76° 42.281
 Looping portion of trail. Underbrush and Grass thickens quickly West of here.
 4. GPS: Lat. 37° 24.594, Lon. 76° 42.343
 Intersection with Fossil Beach connector trail
 5. GPS: Lat. 37° 24.638, Lon. 76° 42.318
 Connector trail ends at Fossil Beach
 6. GPS: Lat. 37° 24.654, Lon. 76° 42.352
 Bench and overlook of York River
 7. GPS: Lat. 37° 24.71, Lon. 76° 42.466
 Boardwalk across marsh
 8. GPS: Lat. 37° 24.716, Lon. 76° 42.56
 East Trailhead at Intersection with Woodstock Pond Trail. Woods House is located SE from here.
- This project made possible in part by a grant from:

