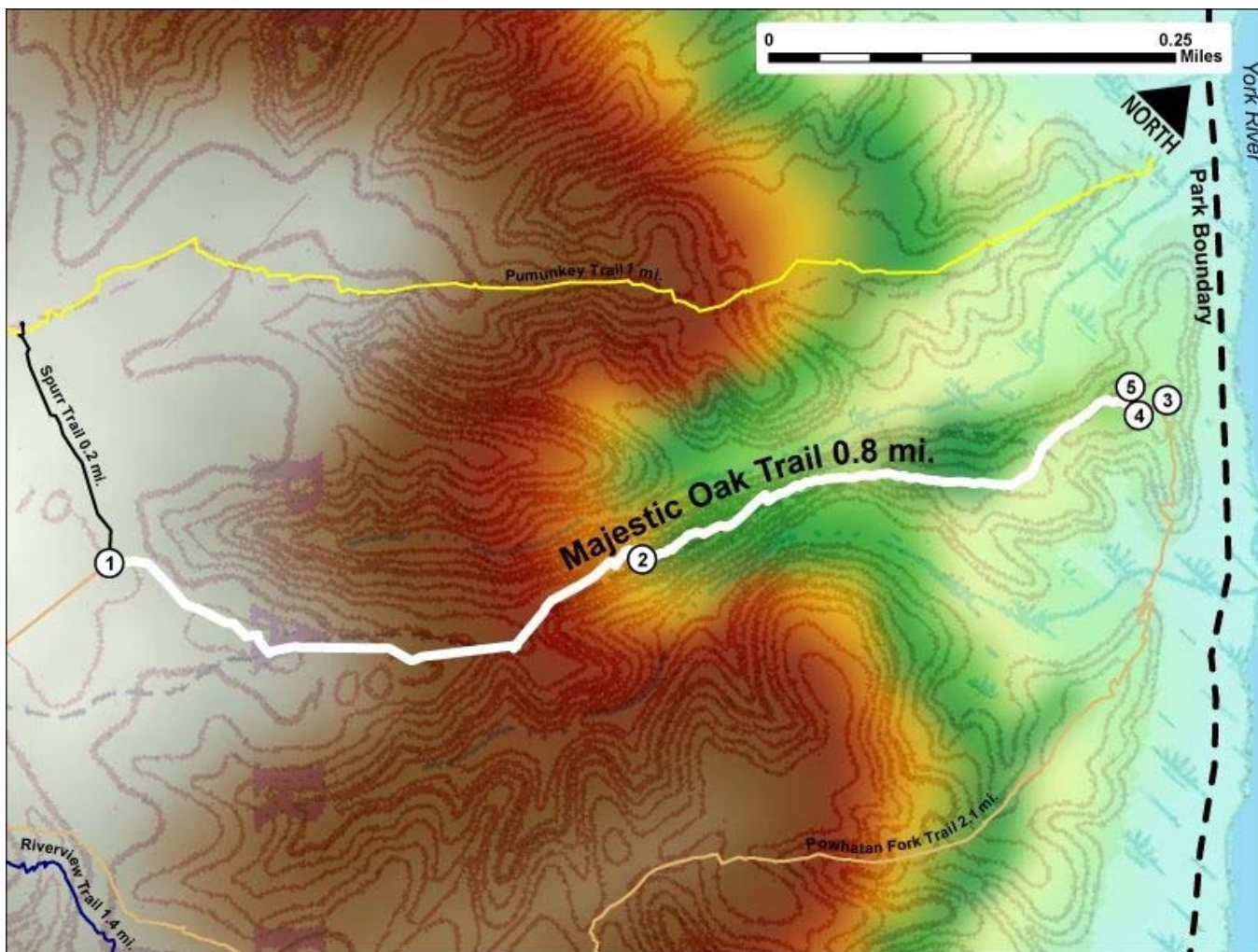


Printed from VirginiaOutdoors.net
York River State Park
Majestic Oak Trail Map - Blaze Color: White



1. GPS: Lat. 37° 23.871, Lon. 76° 42.404
West Trailhead at Intersection with Spurr and Powhatan Fork Trailheads
2. GPS: Lat. 37° 24.071, Lon. 76° 42.149
Halfway point on trail
3. GPS: Lat. 37° 24.325, Lon. 76° 41.97
The Majestic Oak may be viewed from here
4. GPS: Lat. 37° 24.315, Lon. 76° 41.981
East Trailhead at Intersection with Powhatan Fork Trailhead – Caution! No Horses permitted past this point
5. GPS: Lat. 37° 24.318, Lon. 76° 41.992
The Majestic Oak

This project made possible in part by a grant from:

