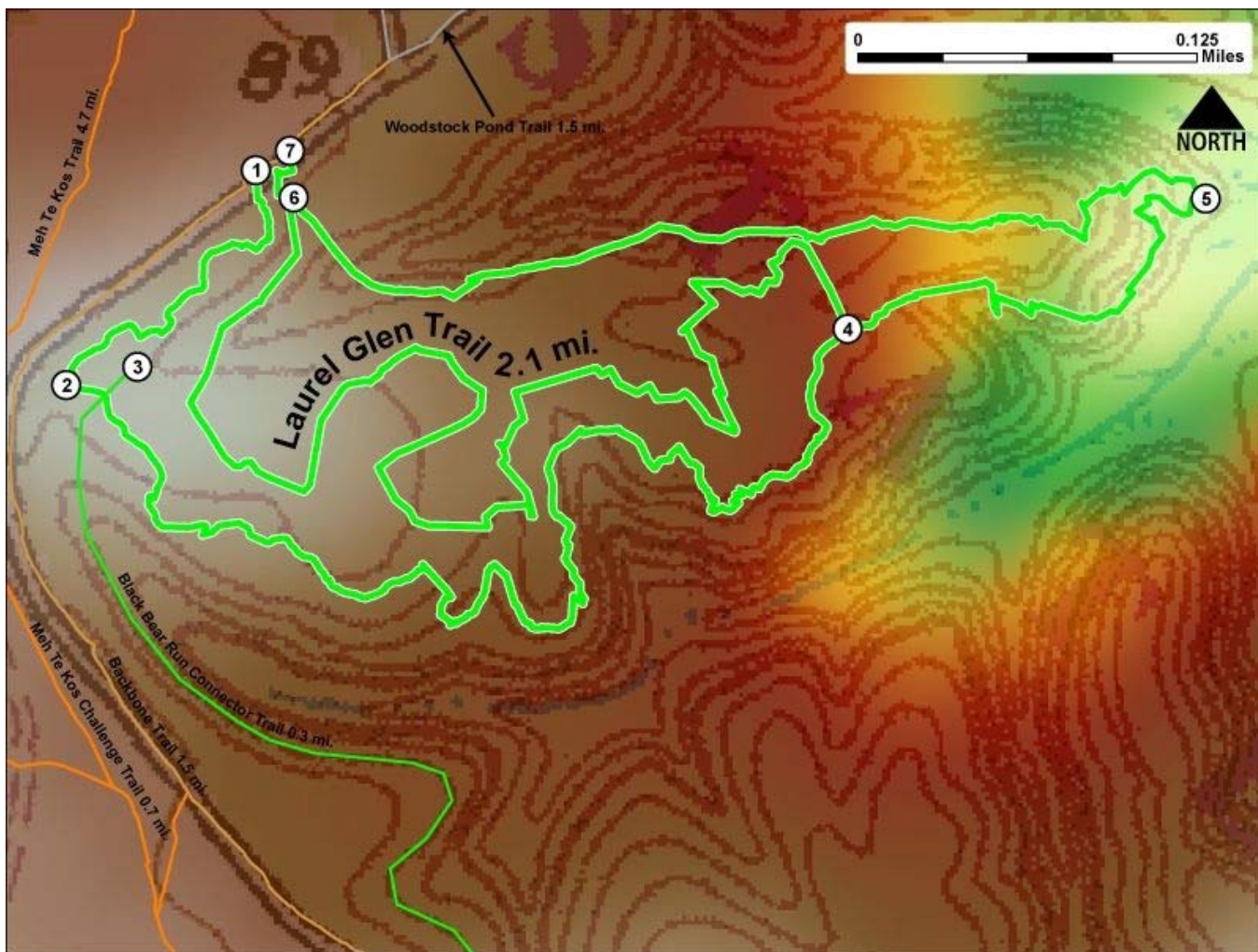


Printed from VirginiaOutdoors.net  
York River State Park  
Laurel Glen Trail Map - Blaze Color: Green



1. GPS: Lat. 37° 24.352, Lon. 76° 42.956  
West Trailhead (Entry) at Intersection with Backbone Trail
2. GPS: Lat. 37° 24.284, Lon. 76° 43.034  
Westernmost portion of Laurel Glen Loop aka Outer Limits
3. GPS: Lat. 37° 24.29, Lon. 76° 43.005  
Intersection with Black Bear Run Trailhead (North)
4. GPS: Lat. 37° 24.298, Lon. 76° 42.719  
Trail Intersects with Switchback Hollow forming two loops
5. GPS: Lat. 37° 24.337, Lon. 76° 42.574  
Easternmost portion of Laurel Glen Loop aka Chesapeake Challenge
6. GPS: Lat. 37° 24.343, Lon. 76° 42.941  
Fork in Trail – Chesapeake Challenge and Switchback Hollow join Quick Escape portion of trail
7. GPS: Lat. 37° 24.358, Lon. 76° 42.942  
East Trailhead (Exit) at Intersection with Backbone Trail

This project made possible in part by a grant from:

