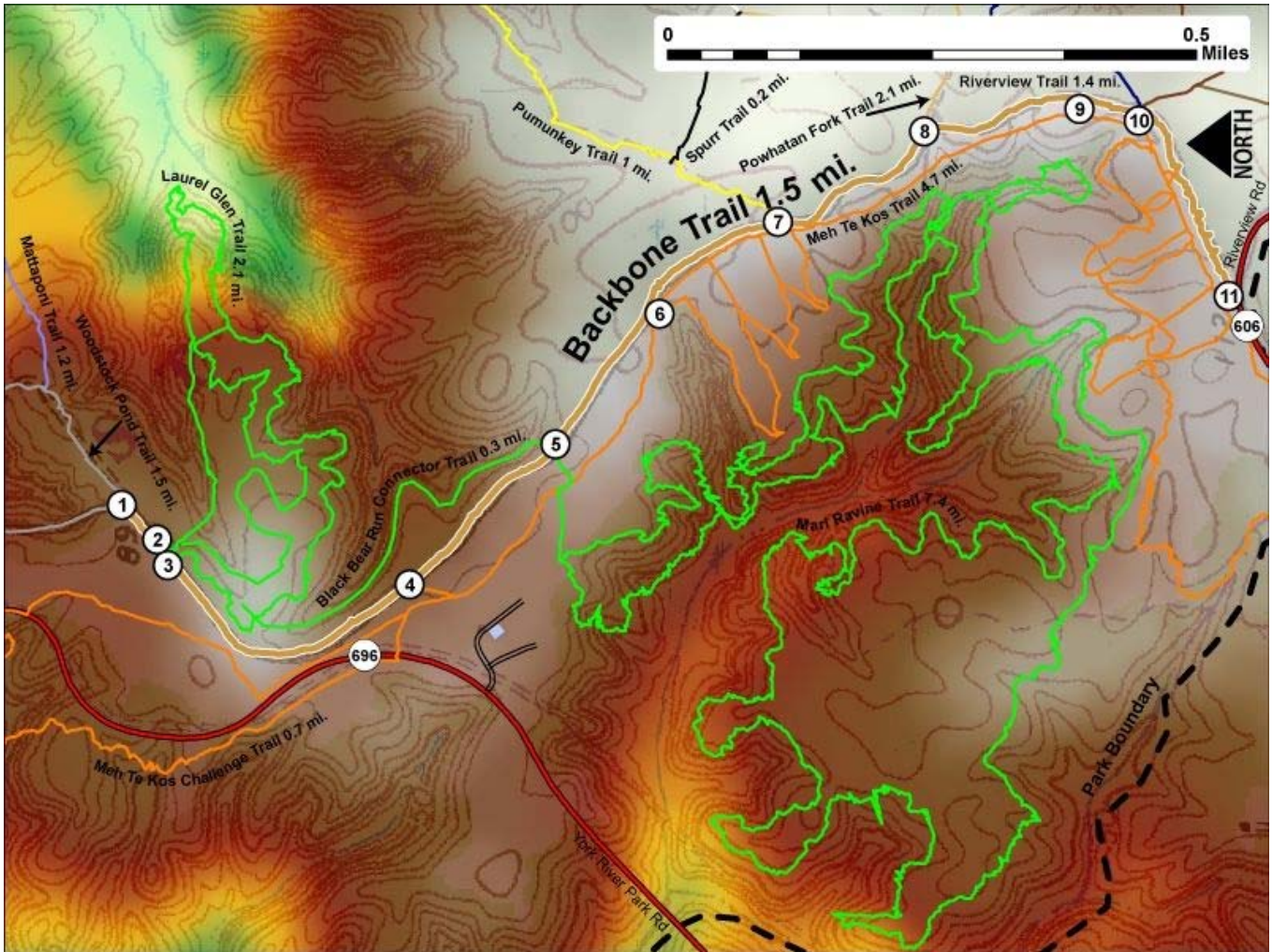


Printed from VirginiaOutdoors.net  
 York River State Park  
 Backbone Trail Map - Blaze Color: Gold



1. GPS: Lat. 37° 24.388, Lon. 76° 42.9  
North Trailhead at Intersection with Woodstock Pond Trail
  2. GPS: Lat. 37° 24.358, Lon. 76° 42.942  
Intersection with Laurel Glen Trailhead (East)
  3. GPS: Lat. 37° 24.352, Lon. 76° 42.956  
Intersection with Laurel Glen Trailhead (West)
  4. GPS: Lat. 37° 24.153, Lon. 76° 42.988  
Fork in trail connects to Meh Te Kos Trail
  5. GPS: Lat. 37° 24.03, Lon. 76° 42.847  
Fork in trail connects to Meh Te Kos Trail
  6. GPS: Lat. 37° 23.95, Lon. 76° 42.714  
Mile Marker 1.0
  7. GPS: Lat. 37° 23.843, Lon. 76° 42.621  
Intersection with Pamunkey Trailhead
  8. GPS: Lat. 37° 23.722, Lon. 76° 42.531  
Intersection with Powhatan Fork Trailhead (West)
  9. GPS: Lat. 37° 23.593, Lon. 76° 42.511  
Mile Marker 1.5
  10. GPS: Lat. 37° 23.544, Lon. 76° 42.514  
Intersection with Riverview and Whitetail Trailheads (West)
  11. GPS: Lat. 37° 23.473, Lon. 76° 42.707  
South Trailhead at Riverview Road marked by Metal Gate
- This project made possible in part by a grant from:

