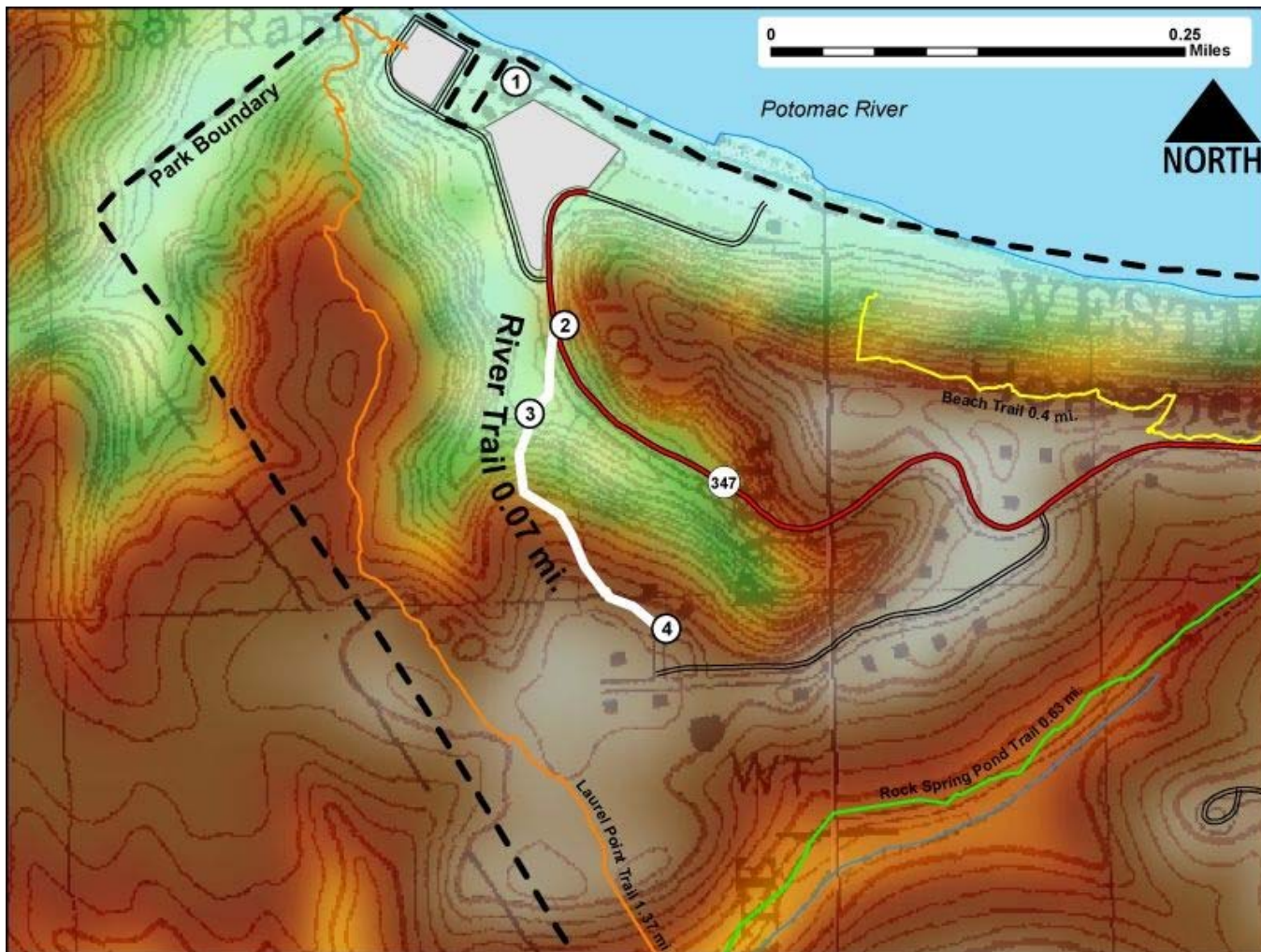


Printed from VirginiaOutdoors.net  
**Westmoreland State Park**  
**River Trail Map - Blaze Color: White**



1. GPS: Lat. 38° 10.404, Lon. -76° 52.684  
Potomac River Retreat and Day Use Parking Area
2. GPS: Lat. 38° 10.276, Lon. -76° 52.661  
Trailhead at intersection with State Park Road SR347
3. GPS: Lat. 38° 10.229, Lon. -76° 52.678  
Base of bluffs. Trail climbs uphill from here.
4. GPS: Lat. 38° 10.115, Lon. -76° 52.59  
Trailhead near Cabin 8

This project made possible in part by a grant from:

