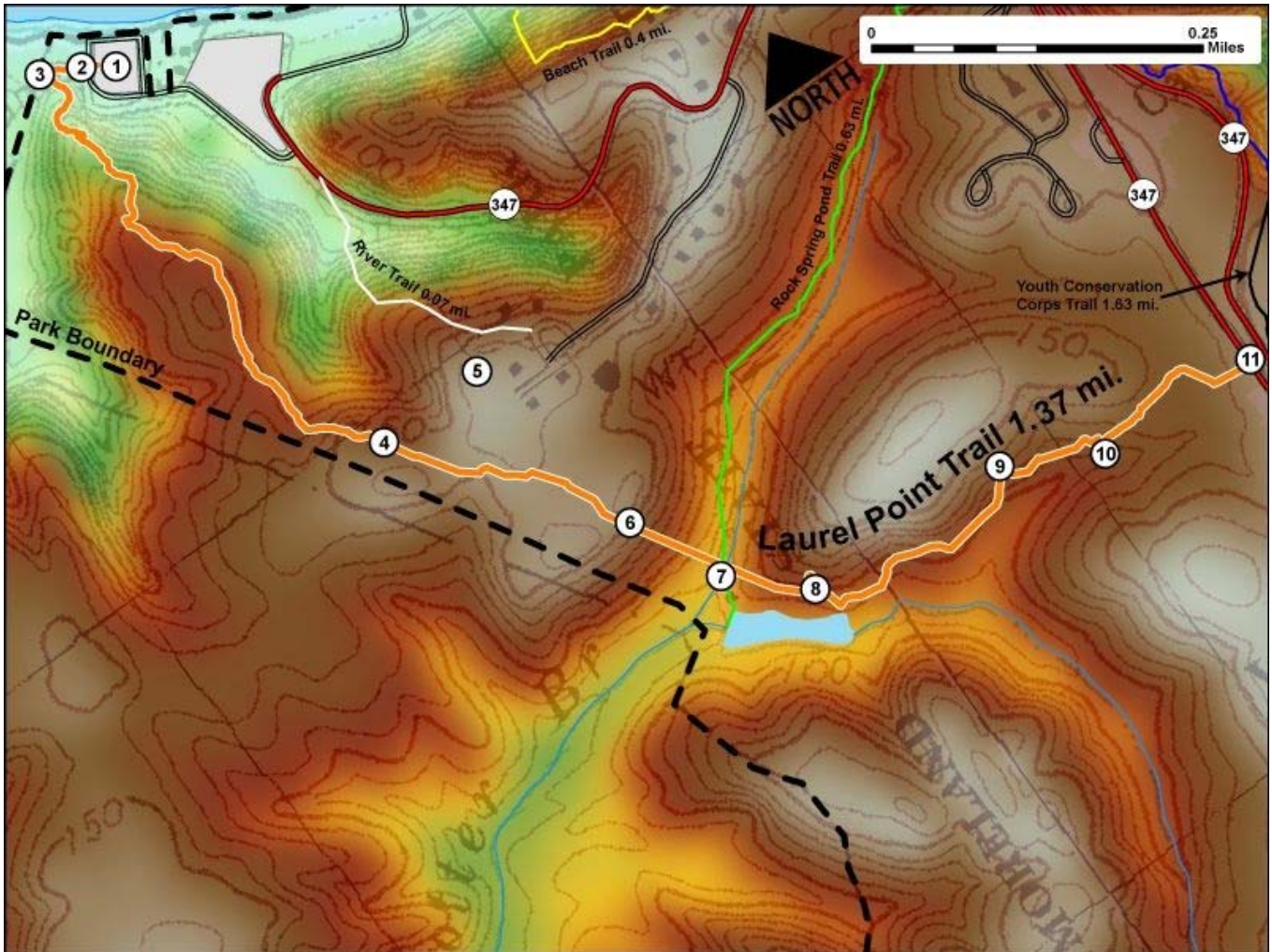


Printed from VirginiaOutdoors.net
Westmoreland State Park
Laurel Point Trail Map - Blaze Color: Orange



1. GPS: Lat. 38° 10.414, Lon. -76° 52.744
Boat Ramp Parking Area and trailhead access
2. GPS: Lat. 38° 10.427, Lon. -76° 52.768
Laurel Point Trailhead
3. GPS: Lat. 38° 10.439, Lon. -76° 52.799
Steps. Trail climbs 100+ feet up hill from here.
4. GPS: Lat. 38° 10.111, Lon. -76° 52.747
Fork in trail at intersection with Cabin Area connector. Connector trail leads to Cabin 9 and small parking area.
5. GPS: Lat. 38° 10.113, Lon. -76° 52.65
Parking Area near Cabin #9
6. GPS: Lat. 38° 9.974, Lon. -76° 52.621
Trail begins descent toward Potter Branch and Rock Spring Pond
7. GPS: Lat. 38° 9.911, Lon. -76° 52.586
Bridge near intersection of Laurel Point Trail and Rock Spring Pond Trail
8. GPS: Lat. 38° 9.867, Lon. -76° 52.529
Steps on trail
9. GPS: Lat. 38° 9.861, Lon. -76° 52.345
Steps on trail
10. GPS: Lat. 38° 9.827, Lon. -76° 52.268
Steps on trail
11. GPS: Lat. 38° 9.821, Lon. -76° 52.124
Trailhead at intersection with State Park Road SR347

This project made possible in part by a grant from:

