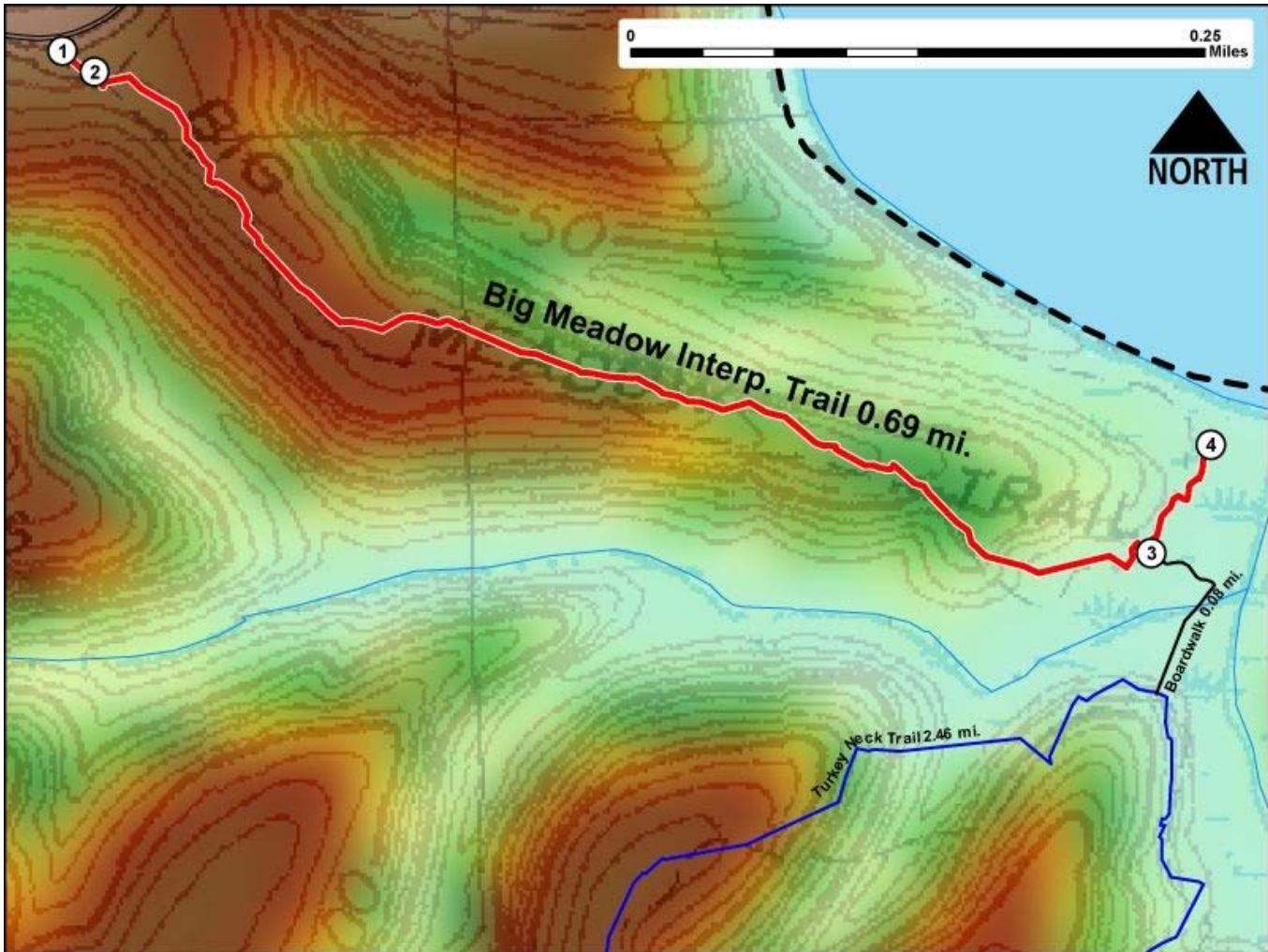


Printed from VirginiaOutdoors.net
Westmoreland State Park
Big Meadow Trail Map - Blaze Color: Red



1. GPS: Lat. 38° 10.178, Lon. -76° 51.805
Parking and trailhead access
2. GPS: Lat. 38° 10.17, Lon. -76° 51.789
Trailhead with Information panels and Interpretive Markers.
3. GPS: Lat. 38° 9.981, Lon. -76° 51.287
Trail intersects with boardwalk connector to the Observation Tower
4. GPS: Lat. 38° 10.021, Lon. -76° 51.257
End of Trail at Fossil Beach

This project made possible in part by a grant from:

