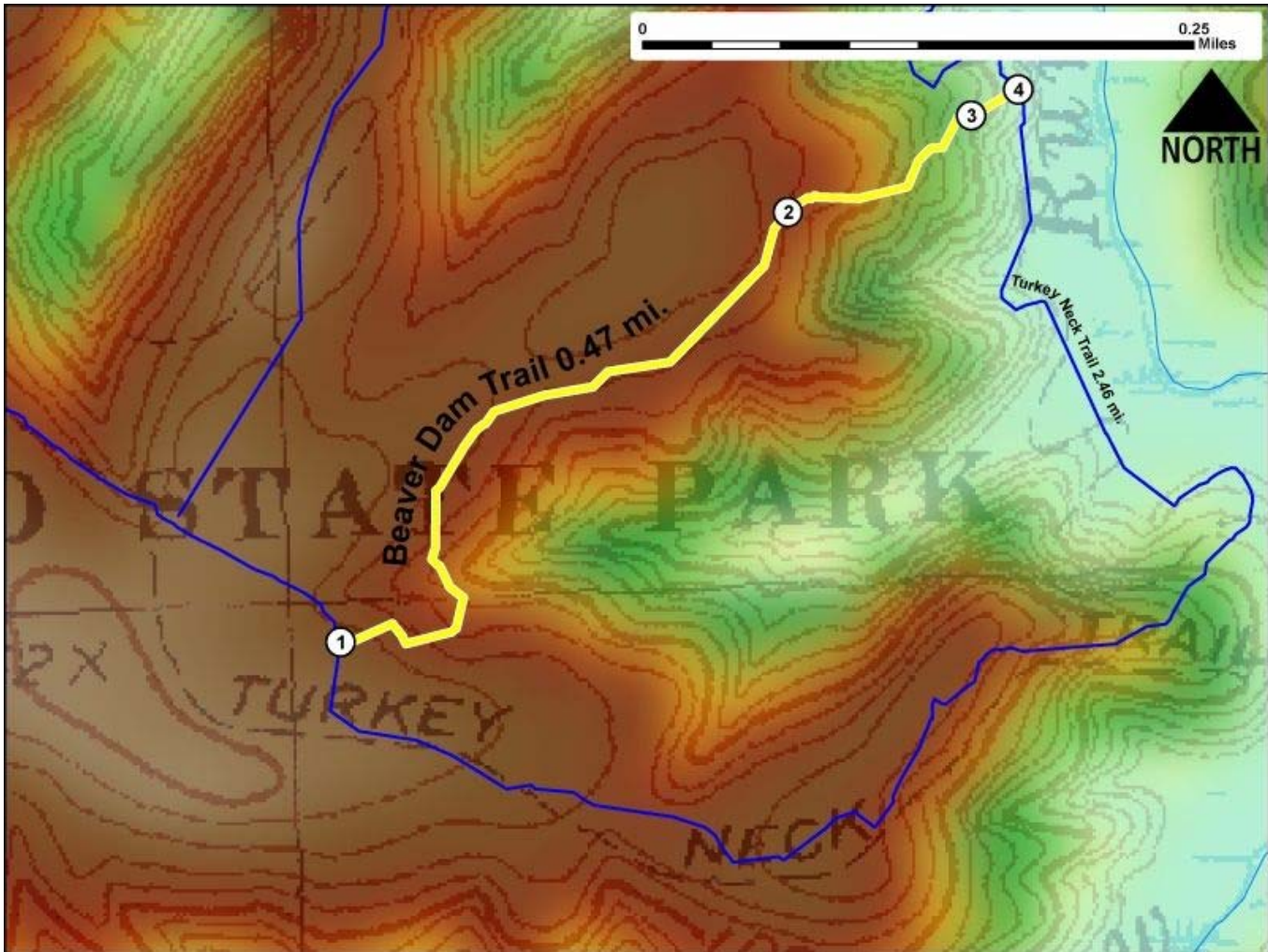


Printed from VirginiaOutdoors.net
Westmoreland State Park
Beaver Dam Trail Map - Blaze Color: Yellow



1. GPS: Lat. 38° 9.59, Lon. -76° 51.578
Fork in trail at intersection of Turkey Neck Trail and Beaver Dam Trail.
2. GPS: Lat. 38° 9.757, Lon. -76° 51.351
Bench near trail
3. GPS: Lat. 38° 9.793, Lon. -76° 51.259
Trail changes elevation as it descends toward marsh area.
4. GPS: Lat. 38° 9.803, Lon. -76° 51.235
Fork in trail at intersection of Turkey Neck Trail and Beaver Dam Trail.

This project made possible in part by a grant from:

