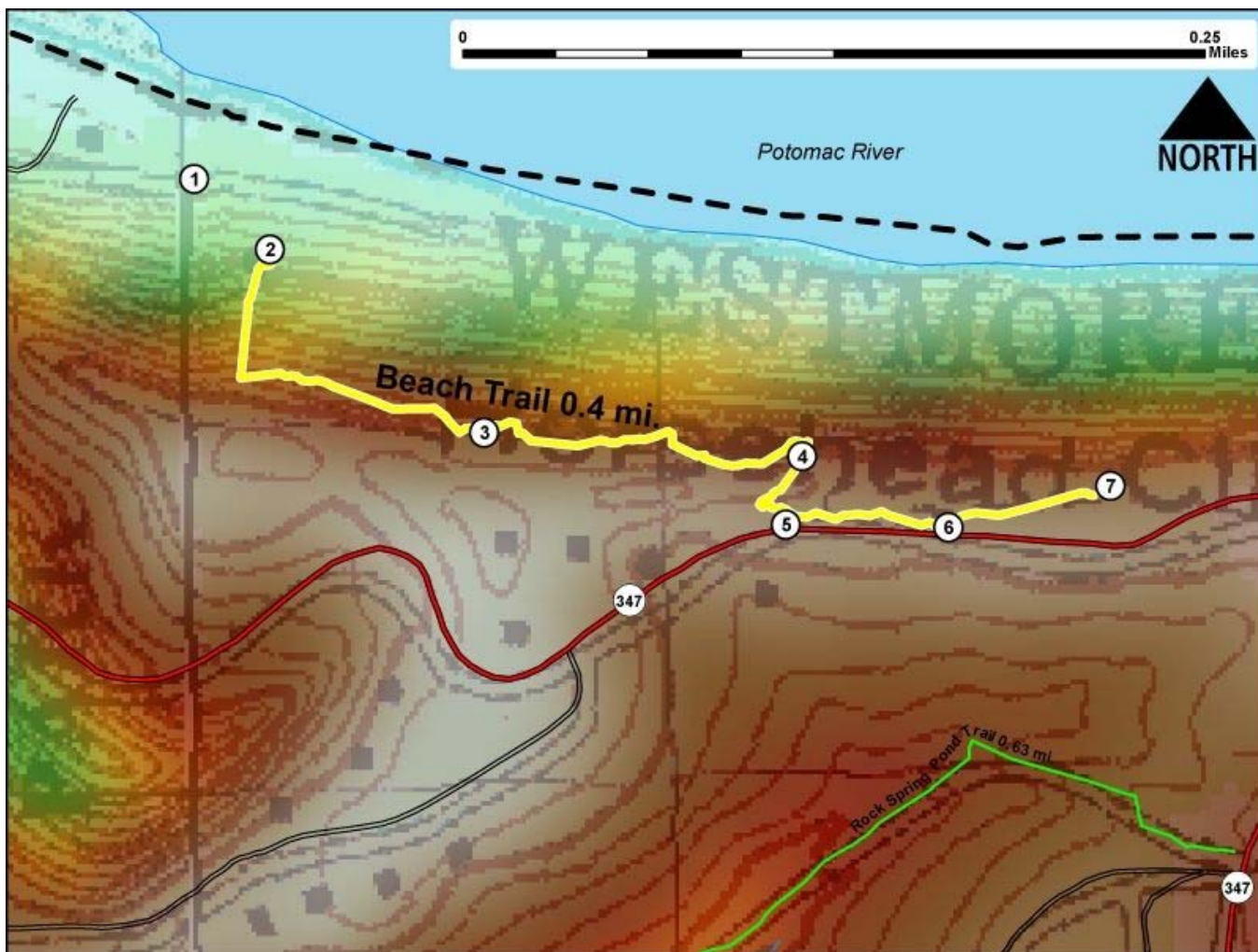


Printed from VirginiaOutdoors.net  
**Westmoreland State Park**  
**Beach Trail Map** - Blaze Color: Yellow



1. GPS: Lat. 38° 10.313, Lon. -76° 52.476  
Swimming Pool / SnackBar
2. GPS: Lat. 38° 10.292, Lon. -76° 52.448  
Trailhead
3. GPS: Lat. 38° 10.239, Lon. -76° 52.37  
Trail runs along Horsehead Cliffs
4. GPS: Lat. 38° 10.229, Lon. -76° 52.252  
Steps on trail
5. GPS: Lat. 38° 10.209, Lon. -76° 52.259  
Steps on trail
6. GPS: Lat. 38° 10.207, Lon. -76° 52.203  
Trail runs adjacent to Park Road.
7. GPS: Lat. 38° 10.218, Lon. -76° 52.138  
Trailhead

This project made possible in part by a grant from:

