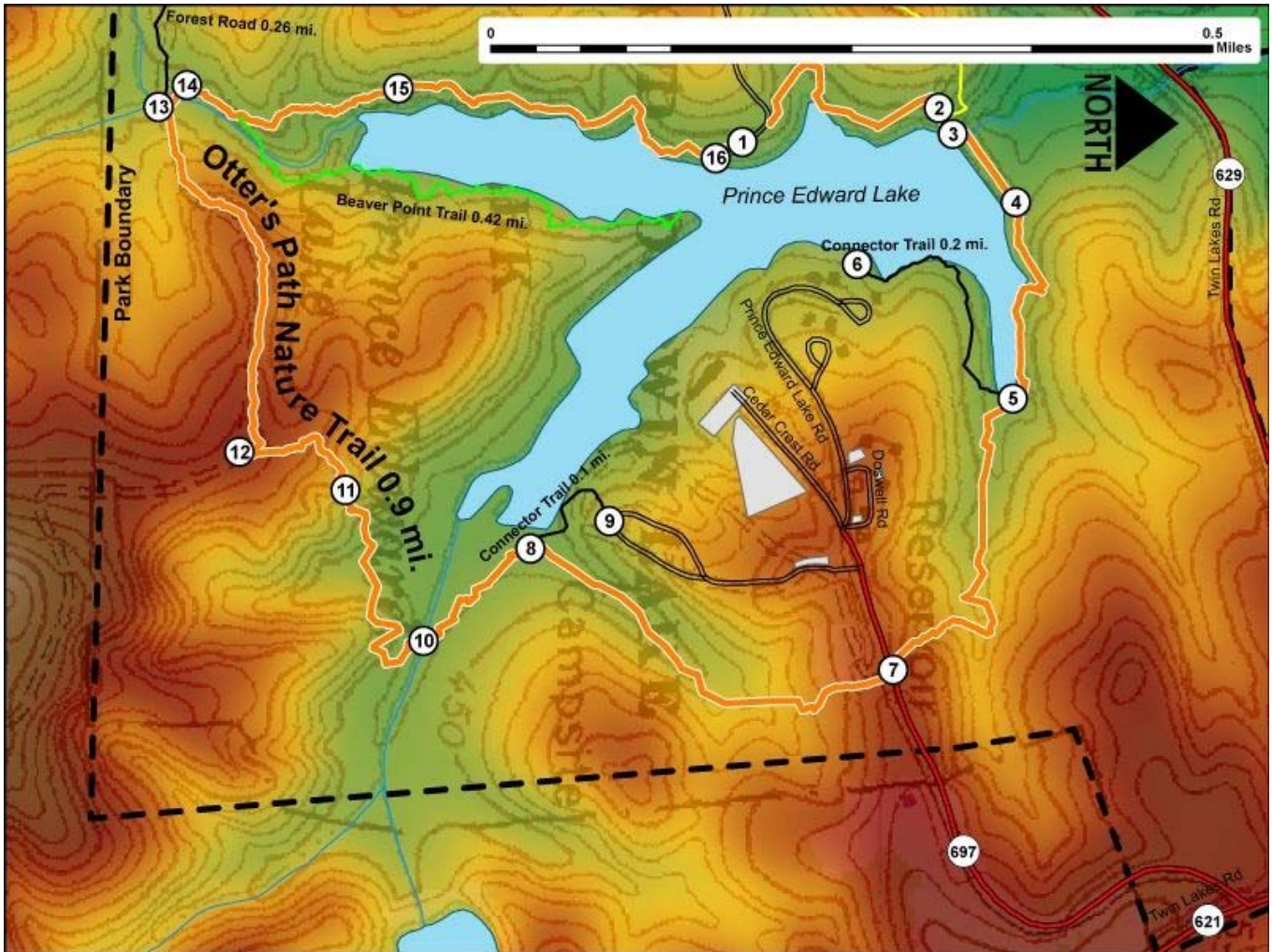


Printed from VirginiaOutdoors.net
Twin Lakes State Park
Otter's Path Nature Trail Map - Blaze Color: Orange



1. GPS: Lat. 37° 10.336, Lon. -78° 16.494
Boat Ramp and trailhead access
2. GPS: Lat. 37° 10.463, Lon. -78° 16.513
Bench and Intersection with Between the Lakes Trail
3. GPS: Lat. 37° 10.463, Lon. -78° 16.508
Trail crosses Bridge over spillway
4. GPS: Lat. 37° 10.504, Lon. -78° 16.451
Trail at east end of dam.
5. GPS: Lat. 37° 10.502, Lon. -78° 16.304
Fork in trail. Trail follows lake shore south to Cabin Area or passes around the Cedar Crest Conference Center to east.
6. GPS: Lat. 37° 10.408, Lon. -78° 16.405
End of Cabin Area connector
7. GPS: Lat. 37° 10.429, Lon. -78° 16.1
Main trail crosses Cedar Crest Road.
8. GPS: Lat. 37° 10.211, Lon. -78° 16.192
Fork in trail. Trail to west connects to Group camp area.
9. GPS: Lat. 37° 10.259, Lon. -78° 16.212
End of Group Camp connector
10. GPS: Lat. 37° 10.146, Lon. -78° 16.123
Boardwalks and bridge cross stream and wetlands
11. GPS: Lat. 37° 10.1, Lon. -78° 16.236
Trail changes elevation
12. GPS: Lat. 37° 10.036, Lon. -78° 16.265
Trail intersects and follows former forest road.
13. GPS: Lat. 37° 9.99, Lon. -78° 16.525

Trail fords stream and intersects with forest road

14. GPS: Lat. 37° 10.005, Lon. -78° 16.541

Trail fords stream

15. GPS: Lat. 37° 10.132, Lon. -78° 16.538

Trail follows lake shore north

16. GPS: Lat. 37° 10.329, Lon. -78° 16.491

Trail returns to boat ramp

This project made possible in part by a grant from:

