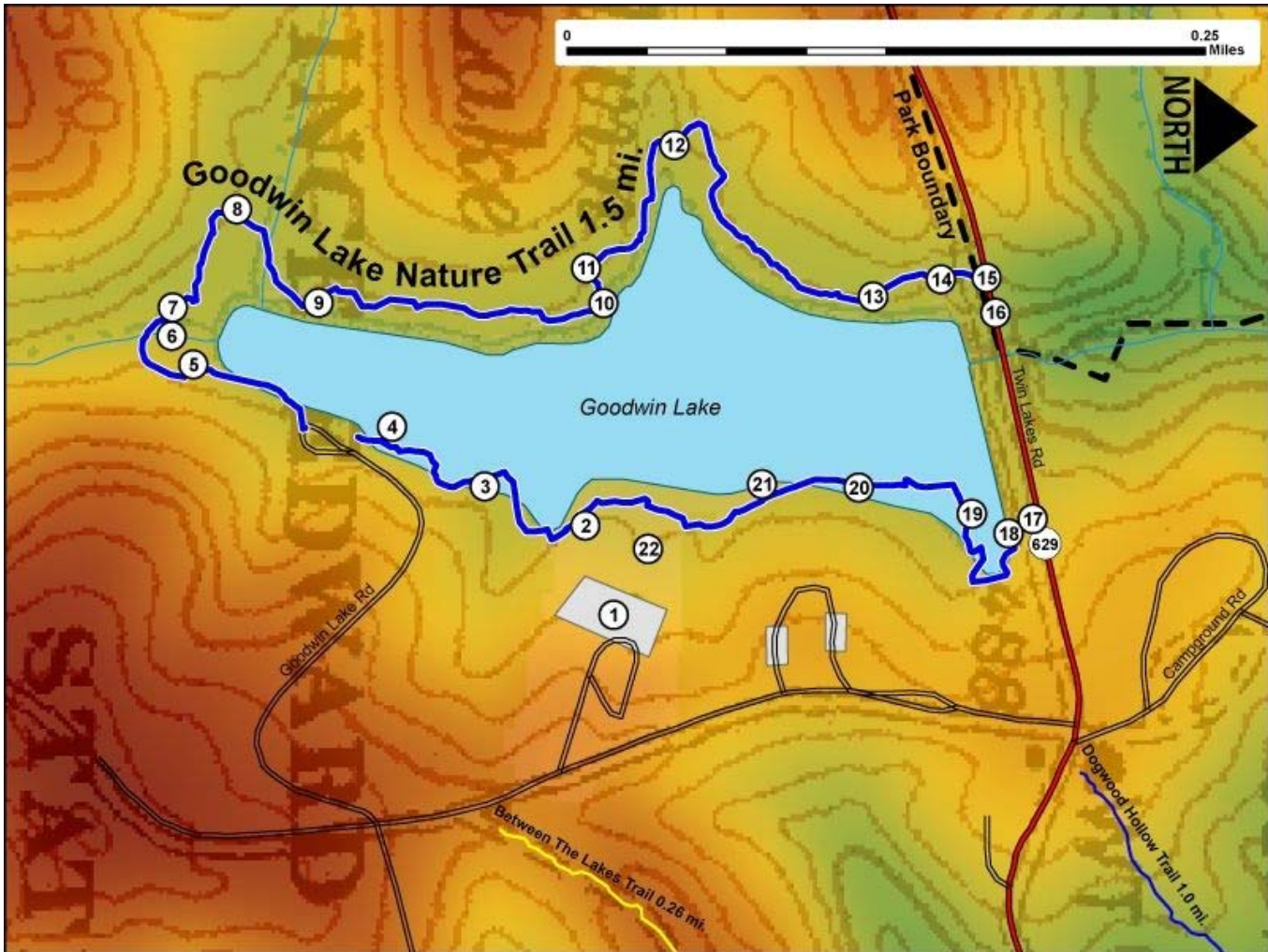


Printed from VirginiaOutdoors.net
Twin Lakes State Park
Goodwin Lake Nature Trail Map - Blaze Color: Blue



1. GPS: Lat. 37° 10.387, Lon. -78° 16.778
Swim Complex Parking Area and Trailhead access.
2. GPS: Lat. 37° 10.378, Lon. -78° 16.816
Trailhead is marked by sign. Trail runs south – clockwise around Goodwin Lake.
3. GPS: Lat. 37° 10.344, Lon. -78° 16.833
Interpretive Marker #1 "Plant Partners"
4. GPS: Lat. 37° 10.312, Lon. -78° 16.858
Boat Ramp
5. GPS: Lat. 37° 10.244, Lon. -78° 16.886
Interpretive Marker #2 "Beaver Homestead"
6. GPS: Lat. 37° 10.237, Lon. -78° 16.902
Interpretive Marker #3 "Feeder Stream"
7. GPS: Lat. 37° 10.237, Lon. -78° 16.909
Bridge over creek
8. GPS: Lat. 37° 10.259, Lon. -78° 16.951
Bridge over creek
9. GPS: Lat. 37° 10.287, Lon. -78° 16.911
Interpretive Marker #4 "Making Connections"
10. GPS: Lat. 37° 10.384, Lon. -78° 16.911
Bench
11. GPS: Lat. 37° 10.378, Lon. -78° 16.926
Interpretive Marker #5 "Tree Community"
12. GPS: Lat. 37° 10.408, Lon. -78° 16.978
Interpretive Marker #6 "The Shallows"
13. GPS: Lat. 37° 10.476, Lon. -78° 16.913

Interpretive Marker #7 "Still Standing"

14. GPS: Lat. 37° 10.499, Lon. -78° 16.92

Interpretive Marker #8 "Tree Competition"

15. GPS: Lat. 37° 10.515, Lon. -78° 16.921

Trail meets Twin Lakes Road SR629 and crosses dam

16. GPS: Lat. 37° 10.518, Lon. -78° 16.906

Bridge over spillway

17. GPS: Lat. 37° 10.53, Lon. -78° 16.818

Trail meets Twin Lakes Road SR629 and crosses dam

18. GPS: Lat. 37° 10.524, Lon. -78° 16.814

Steps

19. GPS: Lat. 37° 10.51, Lon. -78° 16.821

Bench

20. GPS: Lat. 37° 10.471, Lon. -78° 16.832

Bench

21. GPS: Lat. 37° 10.438, Lon. -78° 16.833

Boat Rental

22. GPS: Lat. 37° 10.399, Lon. -78° 16.806

Swim Complex

This project made possible in part by a grant from:

