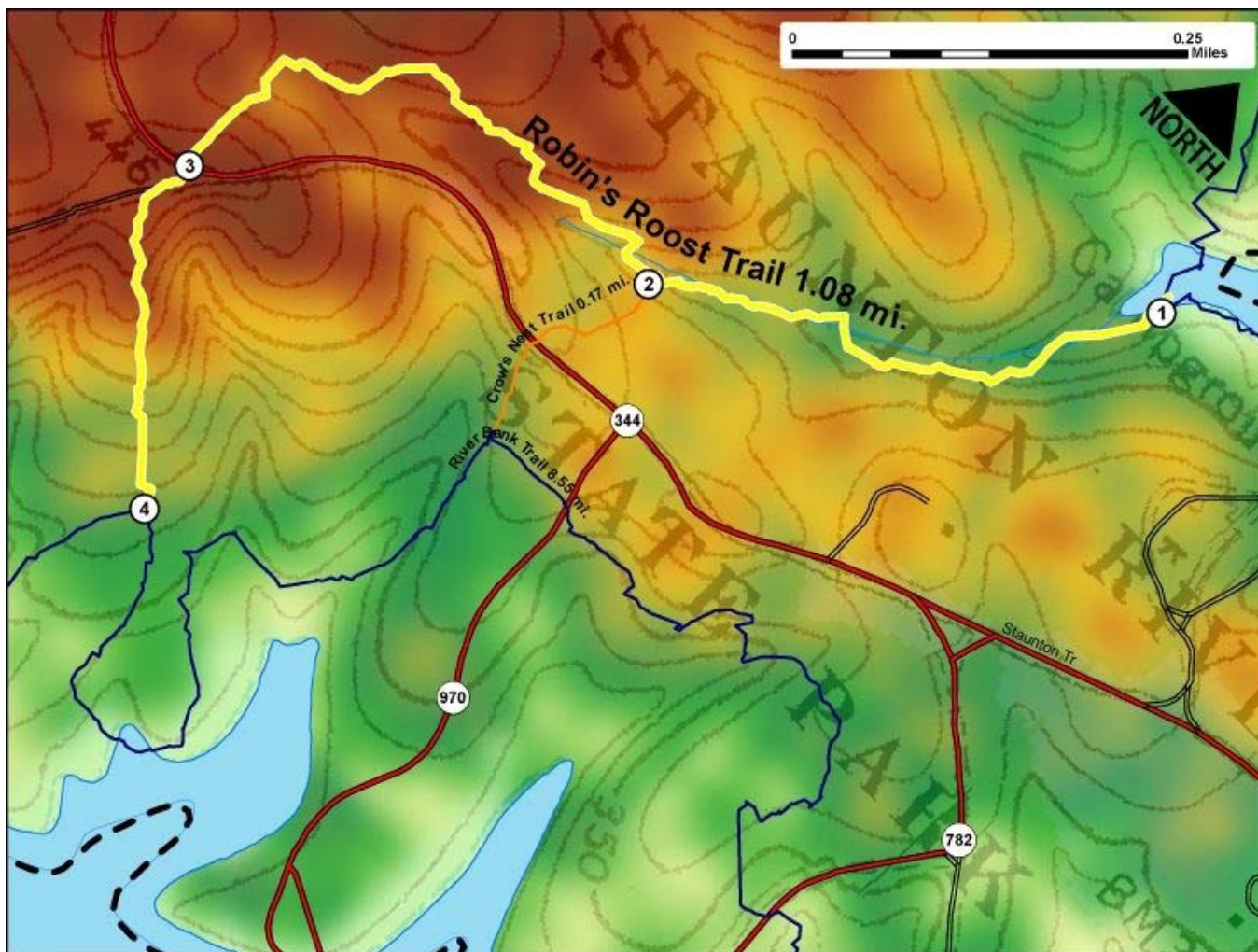


Printed from VirginiaOutdoors.net
Staunton River State Park
Robin's Roost Trail Map - Blaze Color: Yellow



1. GPS: Lat. 36° 42.168, Lon. -78° 40.118
North trailhead at Intersection with the River Bank Trail
2. GPS: Lat. 36° 41.979, Lon. -78° 40.38
Intersection with North Crow's Nest Trailhead
3. GPS: Lat. 36° 41.846, Lon. -78° 40.659
Trail crosses Staunton Trail Road
4. GPS: Lat. 36° 41.695, Lon. -78° 40.515
South trailhead at Intersection with River Bank Trail

This project made possible in part by a grant from:

