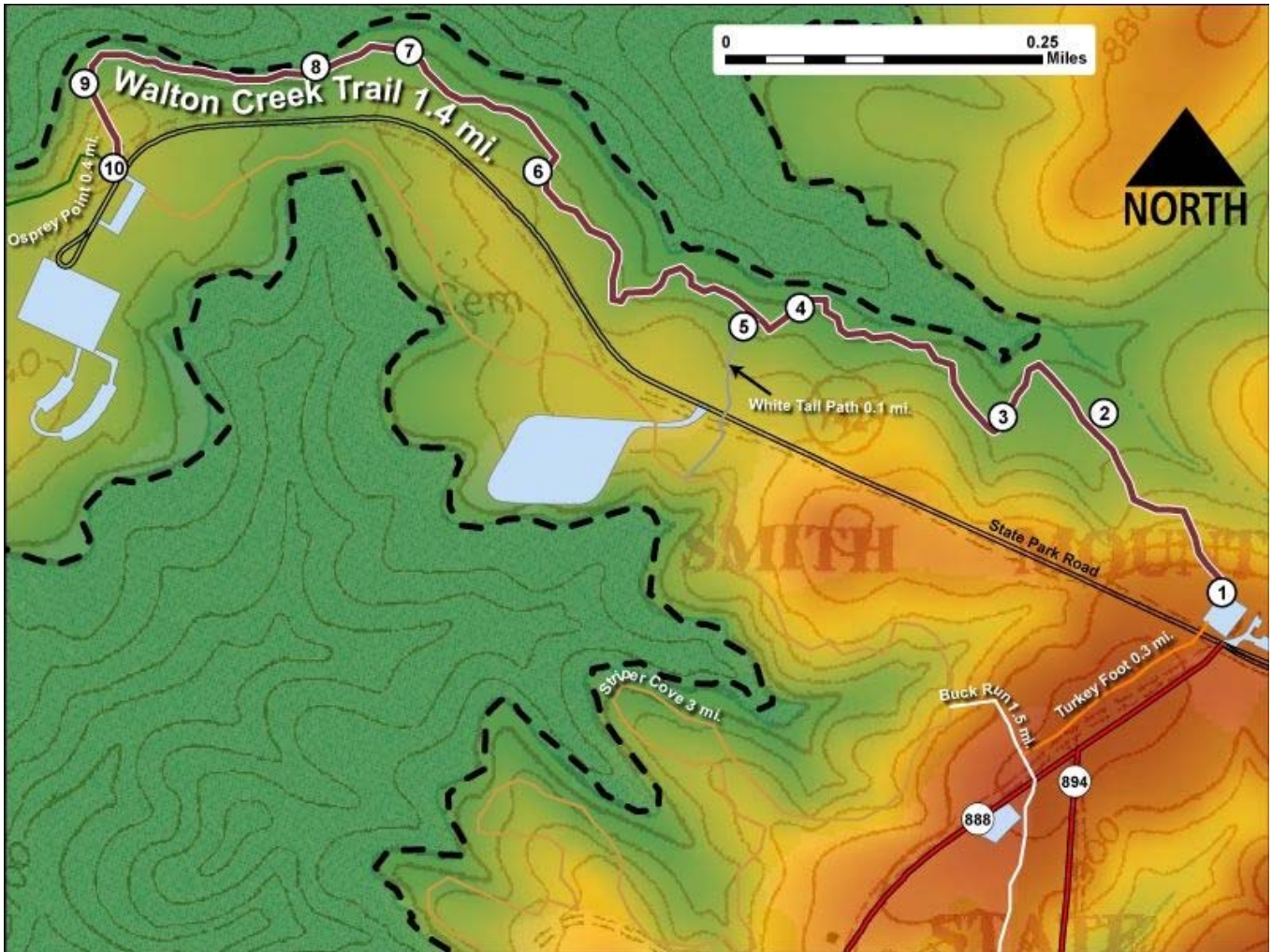


Printed from VirginiaOutdoors.net
Smith Mountain Lake State Park
Walton Creek Trail Map - Blaze Color: Burgundy



1. GPS: Lat. 37° 5.521, Lon. -79° 35.594
Walton Creek Trailhead (Southeast) At Corner of Parking Area
2. GPS: Lat. 37° 5.643, Lon. -79° 35.697
On Trail
3. GPS: Lat. 37° 5.64, Lon. -79° 35.783
On Trail
4. GPS: Lat. 37° 5.713, Lon. -79° 35.958
On Trail
5. GPS: Lat. 37° 5.7, Lon. -79° 36.007
Walton Creek Trail intersects with White Tail Path Trailhead (North)
6. GPS: Lat. 37° 5.805, Lon. -79° 36.185
On Trail
7. GPS: Lat. 37° 5.887, Lon. -79° 36.297
On Trail
8. GPS: Lat. 37° 5.875, Lon. -79° 36.377
Trail passes Canoe Racks
9. GPS: Lat. 37° 5.862, Lon. -79° 36.575
On Trail
10. GPS: Lat. 37° 5.804, Lon. -79° 36.549
Walton Creek Trailhead (Northwest) Across from parking area

This project made possible in part by a grant from:

