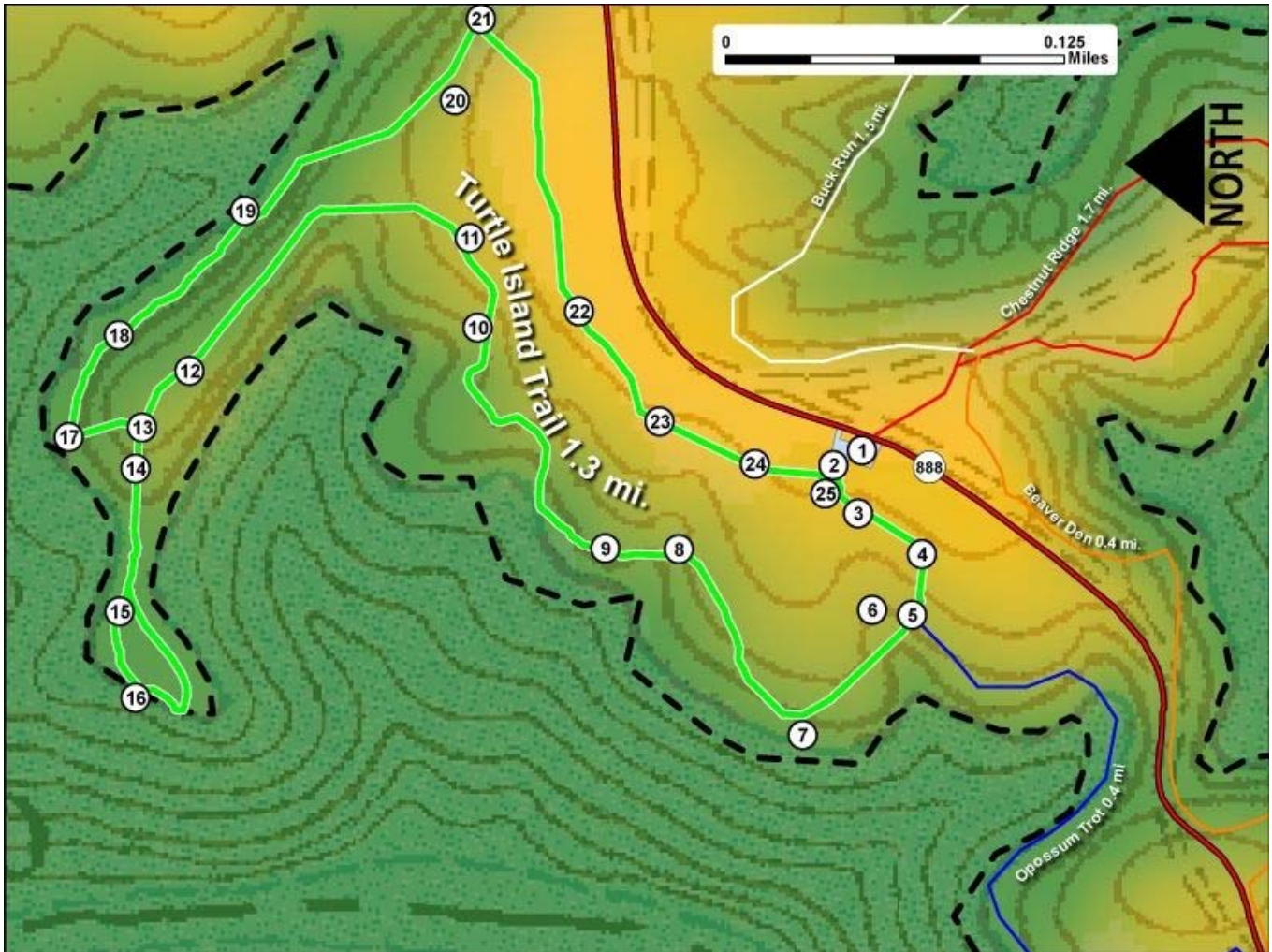


Printed from VirginiaOutdoors.net
Smith Mountain Lake State Park
Turtle Island Trail Map - Blaze Color: Green



1. GPS: Lat. 37° 4.902, Lon. -79° 36.486
Trailhead Parking for Chestnut Ridge Trail
2. GPS: Lat. 37° 4.909, Lon. -79° 36.492
Turtle Island Trailhead – South to shoreline portion of loop – North to Eastern portion of loop and Striper Cove Trail
3. GPS: Lat. 37° 4.901, Lon. -79° 36.511
Interpretive Marker
4. GPS: Lat. 37° 4.88, Lon. -79° 36.527
Interpretive Marker
5. GPS: Lat. 37° 4.883, Lon. -79° 36.552
Turtle Island Trail intersects with Opossum Trot Trailhead (North)
6. GPS: Lat. 37° 4.896, Lon. -79° 36.55
Interpretive Marker
7. GPS: Lat. 37° 4.918, Lon. -79° 36.6
Interpretive Marker and bench
8. GPS: Lat. 37° 4.958, Lon. -79° 36.526
Interpretive Marker
9. GPS: Lat. 37° 4.982, Lon. -79° 36.526
Interpretive Marker
10. GPS: Lat. 37° 5.024, Lon. -79° 36.439
Interpretive Marker
11. GPS: Lat. 37° 5.027, Lon. -79° 36.403
Two Interpretive Markers
12. GPS: Lat. 37° 5.116, Lon. -79° 36.457
Interpretive Marker and bench near shoreline
13. GPS: Lat. 37° 5.131, Lon. -79° 36.48

Fork in trail – North continues loop and returns to trailhead – West to Turtle Island

14. GPS: Lat. 37° 5.133, Lon. -79° 36.497

Bridge to Turtle Island

15. GPS: Lat. 37° 5.138, Lon. -79° 36.554

Interpretive Marker and sign – Trail loops around island from here

16. GPS: Lat. 37° 5.132, Lon. -79° 36.589

Interpretive sign and bench – several other benches are located around the island

17. GPS: Lat. 37° 5.155, Lon. -79° 36.484

Interpretive Marker and bench

18. GPS: Lat. 37° 5.139, Lon. -79° 36.443

Interpretive Marker

19. GPS: Lat. 37° 5.099, Lon. -79° 36.393

Interpretive Marker and bench

20. GPS: Lat. 37° 5.032, Lon. -79° 36.347

Two Interpretive Markers

21. GPS: Lat. 37° 5.024, Lon. -79° 36.315

Turtle Island Trail intersects with Striper Cove Trailhead (South) – Interpretive Marker

22. GPS: Lat. 37° 4.991, Lon. -79° 36.431

Interpretive Marker

23. GPS: Lat. 37° 4.965, Lon. -79° 36.475

Interpretive Marker and Bird Blind nearby

24. GPS: Lat. 37° 4.934, Lon. -79° 36.492

Interpretive Marker

25. GPS: Lat. 37° 4.91, Lon. -79° 36.5

Interpretive Marker near Trailhead

This project made possible in part by a grant from:

