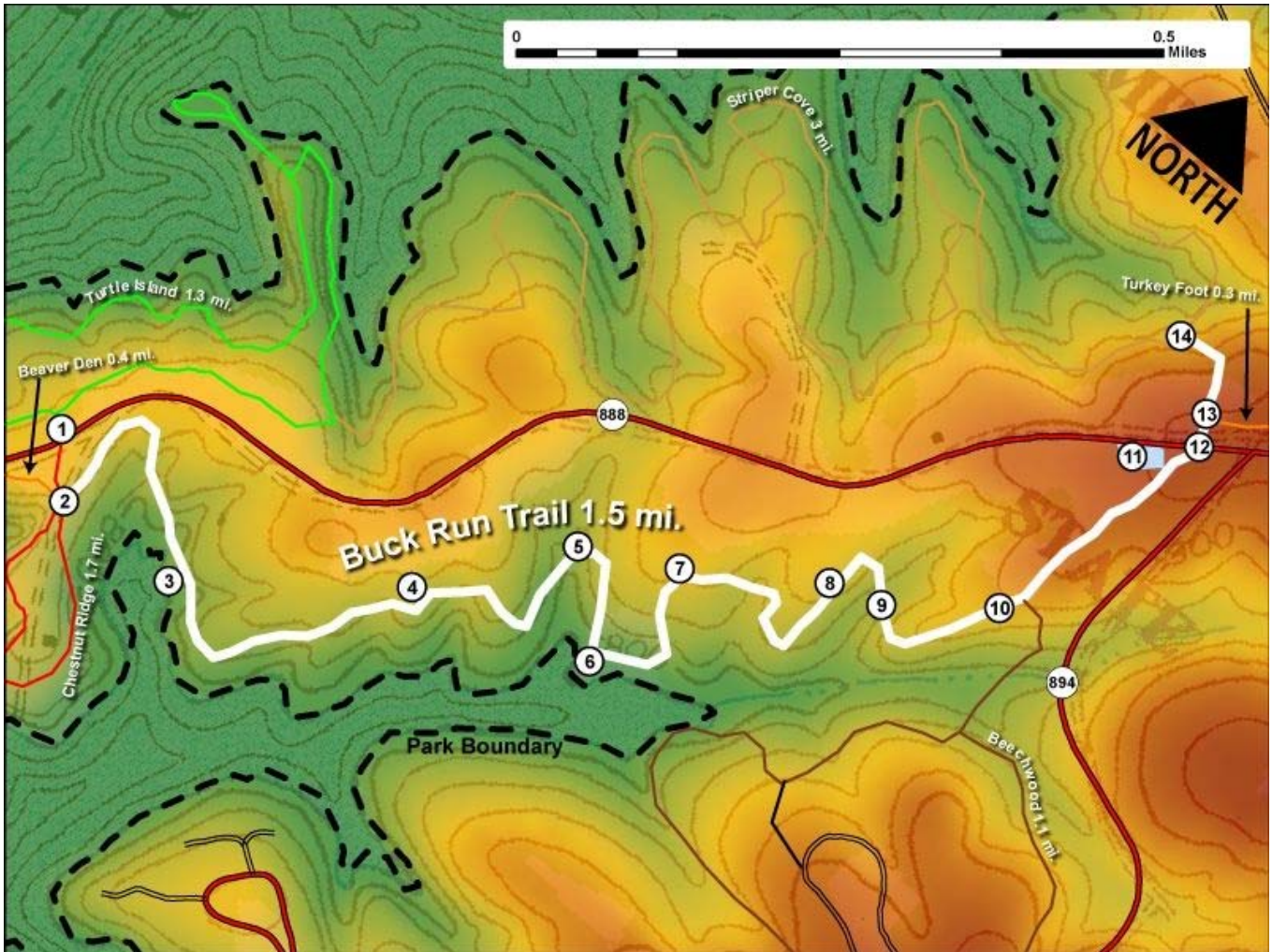


Printed from VirginiaOutdoors.net
Smith Mountain Lake State Park
Buck Run Trail Map - Blaze Color: White



1. GPS: Lat. 37° 4.902, Lon. -79° 36.486
Trailhead Parking for Buck Run Trail (South)
2. GPS: Lat. 37° 4.867, Lon. -79° 36.445
Buck Run Trailhead (South) intersects with Chestnut Ridge Trail
3. GPS: Lat. 37° 4.872, Lon. -79° 36.335
Bench on trail
4. GPS: Lat. 37° 4.975, Lon. -79° 36.177
On Trail
5. GPS: Lat. 37° 5.068, Lon. -79° 36.093
On Trail
6. GPS: Lat. 37° 5.015, Lon. -79° 36.023
Bench on trail
7. GPS: Lat. 37° 5.102, Lon. -79° 36.017
On Trail
8. GPS: Lat. 37° 5.16, Lon. -79° 35.913
On Trail
9. GPS: Lat. 37° 5.172, Lon. -79° 35.868
On Trail
10. GPS: Lat. 37° 5.222, Lon. -79° 35.792
Buck Run intersects with Beechwood Trailhead
11. GPS: Lat. 37° 5.361, Lon. -79° 35.784
Trailhead Parking for Buck Run Trail (North)
12. GPS: Lat. 37° 5.391, Lon. -79° 35.753
Trail crosses park road
13. GPS: Lat. 37° 5.409, Lon. -79° 35.764

Buck Run intersects with Turkey Foot Trailhead (South)

14. GPS: Lat. 37° 5.44, Lon. -79° 35.825

Buck Run Trailhead (North) at intersection with Striper Cove Trail

This project made possible in part by a grant from:

