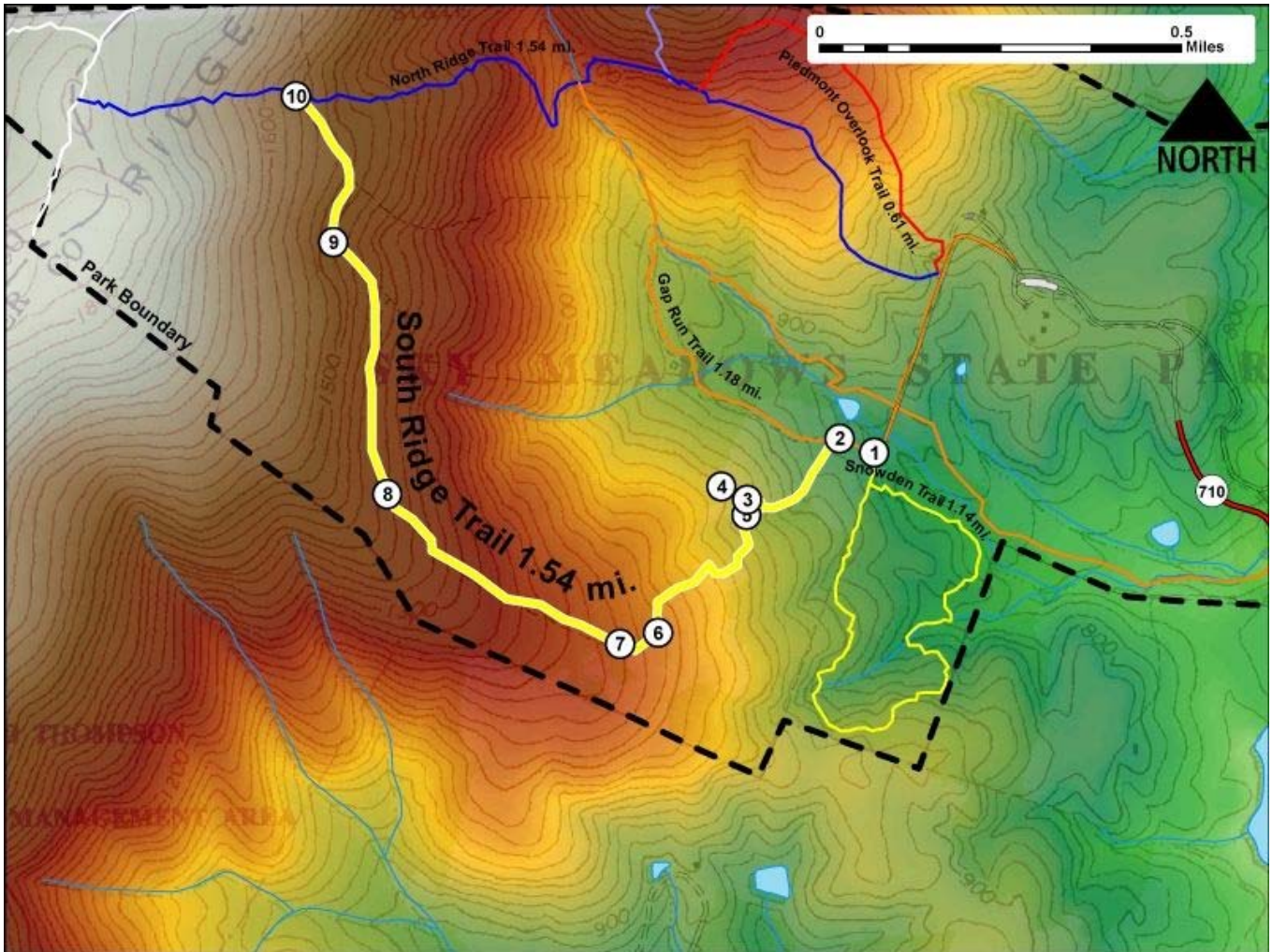


Printed from VirginiaOutdoors.net
Sky Meadows State Park
South Ridge Trail Map - Blaze Color: Yellow



1. GPS: Lat. 38° 59.286, Lon. -77° 58.211
South Ridge Trail - Gap Run Trail and Snowden Trailhead access from gravel service drive.
2. GPS: Lat. 38° 59.318, Lon. -77° 58.264
Intersection of the South Ridge Trail and the Gap Run Trail.
3. GPS: Lat. 38° 59.243, Lon. -77° 58.407
Fork in Trail. North to Overlook and bench
4. GPS: Lat. 38° 59.257, Lon. -77° 58.447
Bench and Overlook
5. GPS: Lat. 38° 59.225, Lon. -77° 58.408
Trail crosses creek near remains of building
6. GPS: Lat. 38° 59.084, Lon. -77° 58.545
Bench at edge of clearing
7. GPS: Lat. 38° 59.071, Lon. -77° 58.604
Steps on trail
8. GPS: Lat. 38° 59.252, Lon. -77° 58.961
Bench near trail
9. GPS: Lat. 38° 59.556, Lon. -77° 59.042
Trail crosses creek
10. GPS: Lat. 38° 59.731, Lon. -77° 59.099
Intersection of the South Ridge Trail and the North Ridge Trail.

This project made possible in part by a grant from:

