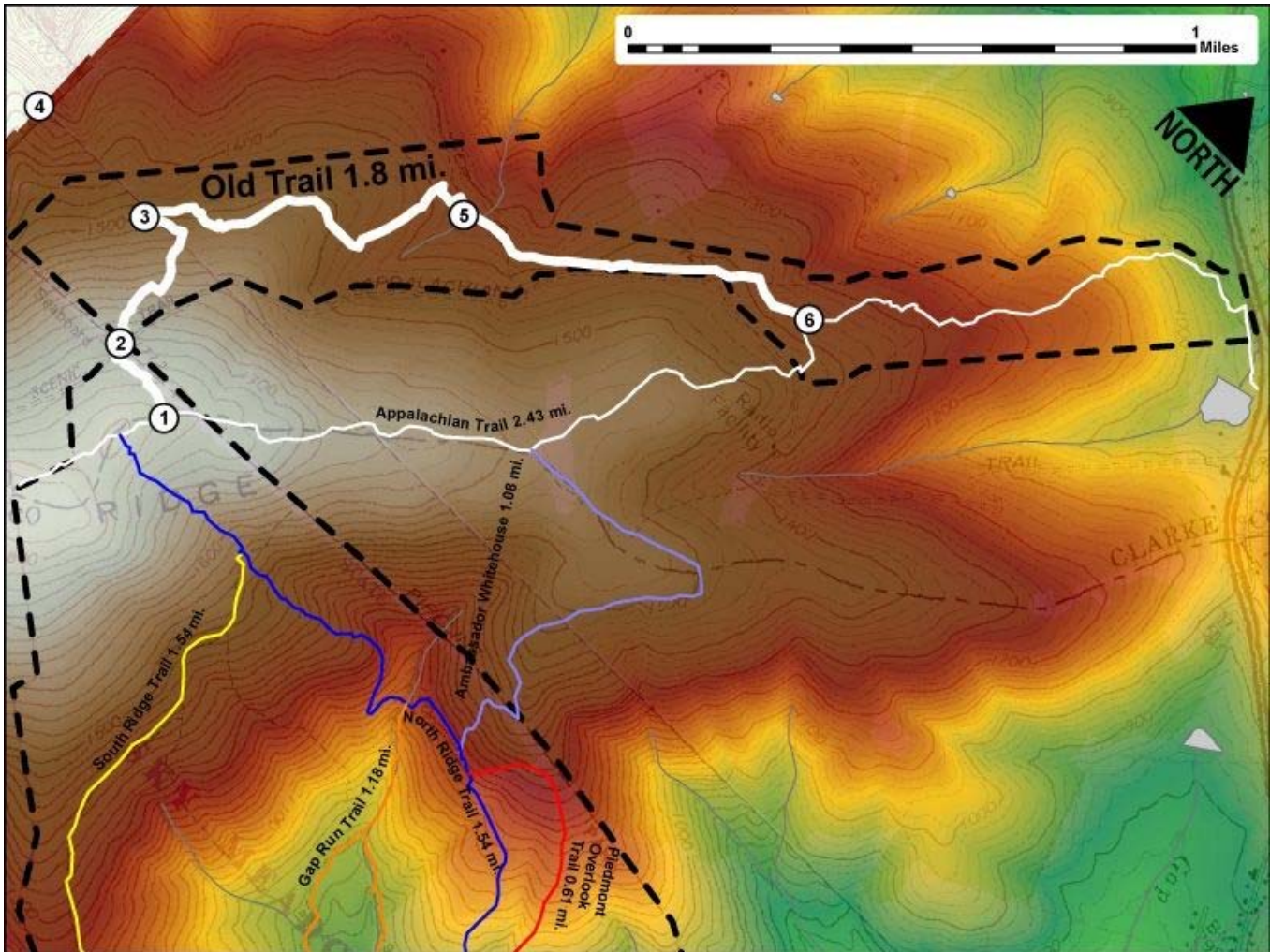


Printed from VirginiaOutdoors.net
Sky Meadows State Park
Old Trail Map - Blaze Color: White



- 1. GPS: Lat. 38° 59.795, Lon. -77° 59.395
 Fork in the trail. New access to the Appalachian Trail continues northeast. Old Trail turns to west.
- 2. GPS: Lat. 38° 59.829, Lon. -77° 59.56
 Trail briefly follows gravel road
- 3. GPS: Lat. 38° 59.993, Lon. -77° 59.7
 Hairpin turn in trail and closest point on trail to the nearby Degree Confluence.
- 4. GPS: Lat. 39° 0, Lon. -78° 0
 Geographic Point of Interest – The Degree Confluence or intersection of 78° 0' 0 W 39° 0' 0 N. The point is marked by a brass plaque affixed to a tree at the site. The site is within the Thompson Wildlife Management Area (hunting is allowed). NOTE: No formal trail exists at this location and information is provided only for public interest.
- 5. GPS: Lat. 39° 0.339, Lon. -77° 59.257
 Trail crosses a creek via ford.
- 6. GPS: Lat. 39° 0.597, Lon. -77° 58.629
 Fork in the trail. New AT access starts northeast and southwest.

This project made possible in part by a grant from:

