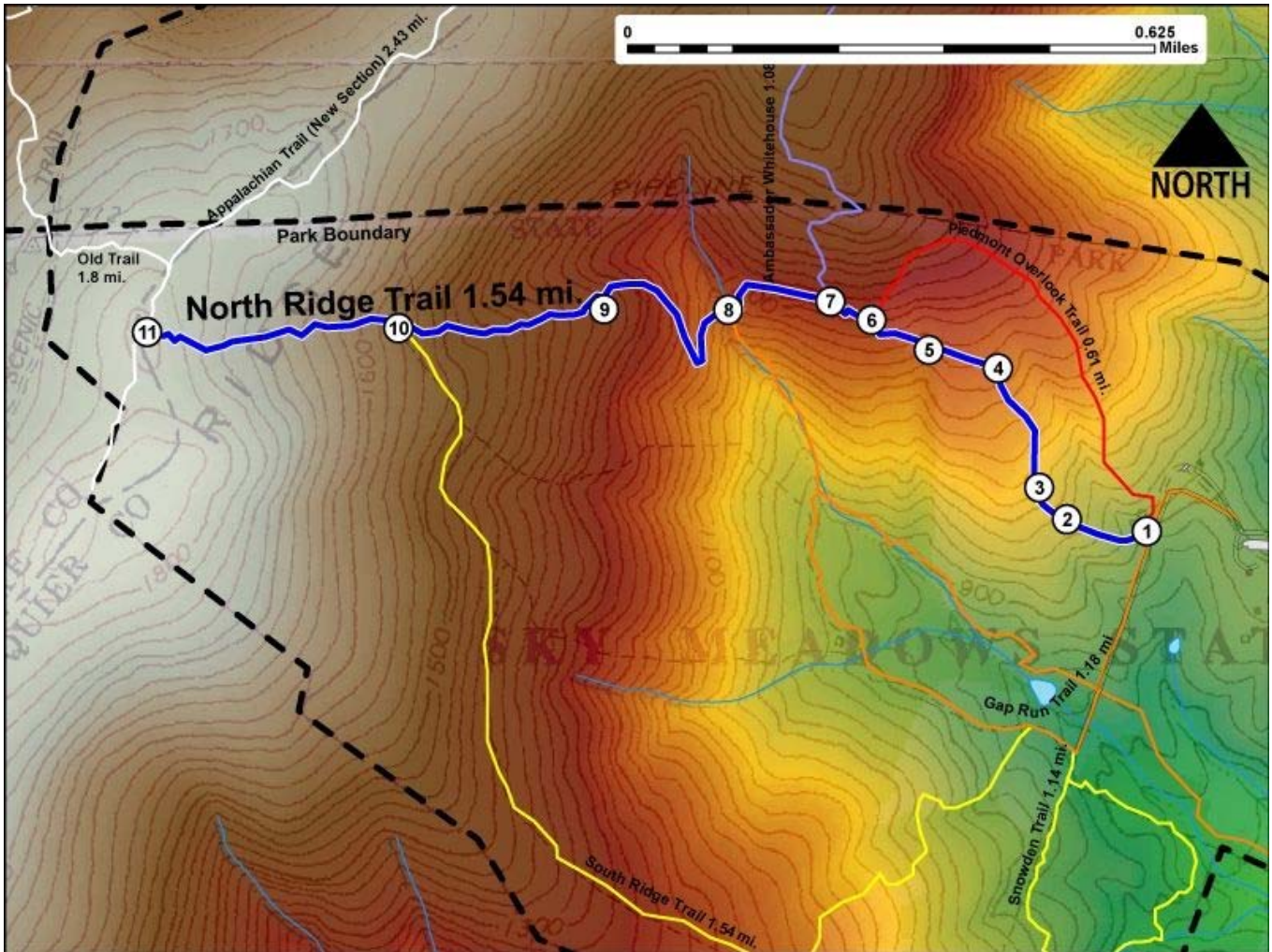


Printed from VirginiaOutdoors.net  
**Sky Meadows State Park**  
**North Ridge Trail Map - Blaze Color: Blue**



1. GPS: Lat. 38° 59.517, Lon. -77° 58.111  
Gap Run Trail and Piedmont Overlook and North Ridge Trailheads access from gravel service drive. Parking is also available near the Visitor Center.
2. GPS: Lat. 38° 59.53, Lon. -77° 58.217  
Trail sign
3. GPS: Lat. 38° 59.563, Lon. -77° 58.253  
Bench near trail
4. GPS: Lat. 38° 59.686, Lon. -77° 58.307  
Trail sign
5. GPS: Lat. 38° 59.705, Lon. -77° 58.398  
A 'stile' or pair of steps that allow hikers to cross fences or walls.
6. GPS: Lat. 38° 59.736, Lon. -77° 58.474  
Intersection of North Trailhead for the Piedmont Overlook Trail and the North Ridge Trail.
7. GPS: Lat. 38° 59.756, Lon. -77° 58.528  
Intersection of South Trailhead for the Ambassador Whitehouse Trail and the North Ridge Trail.
8. GPS: Lat. 38° 59.748, Lon. -77° 58.663  
Intersection of North Trailhead for the Gap Run Trail and the North Ridge Trail. Bench nearby. North Ridge crosses creek
9. GPS: Lat. 38° 59.758, Lon. -77° 58.827  
Switchback on difficult portion of trail.
10. GPS: Lat. 38° 59.731, Lon. -77° 59.099  
Intersection of North Trailhead for the South Ridge Trail and the North Ridge Trail.
11. GPS: Lat. 38° 59.728, Lon. -77° 59.431  
Intersection of AT and West trailhead for the North Ridge Trail

This project made possible in part by a grant from:

