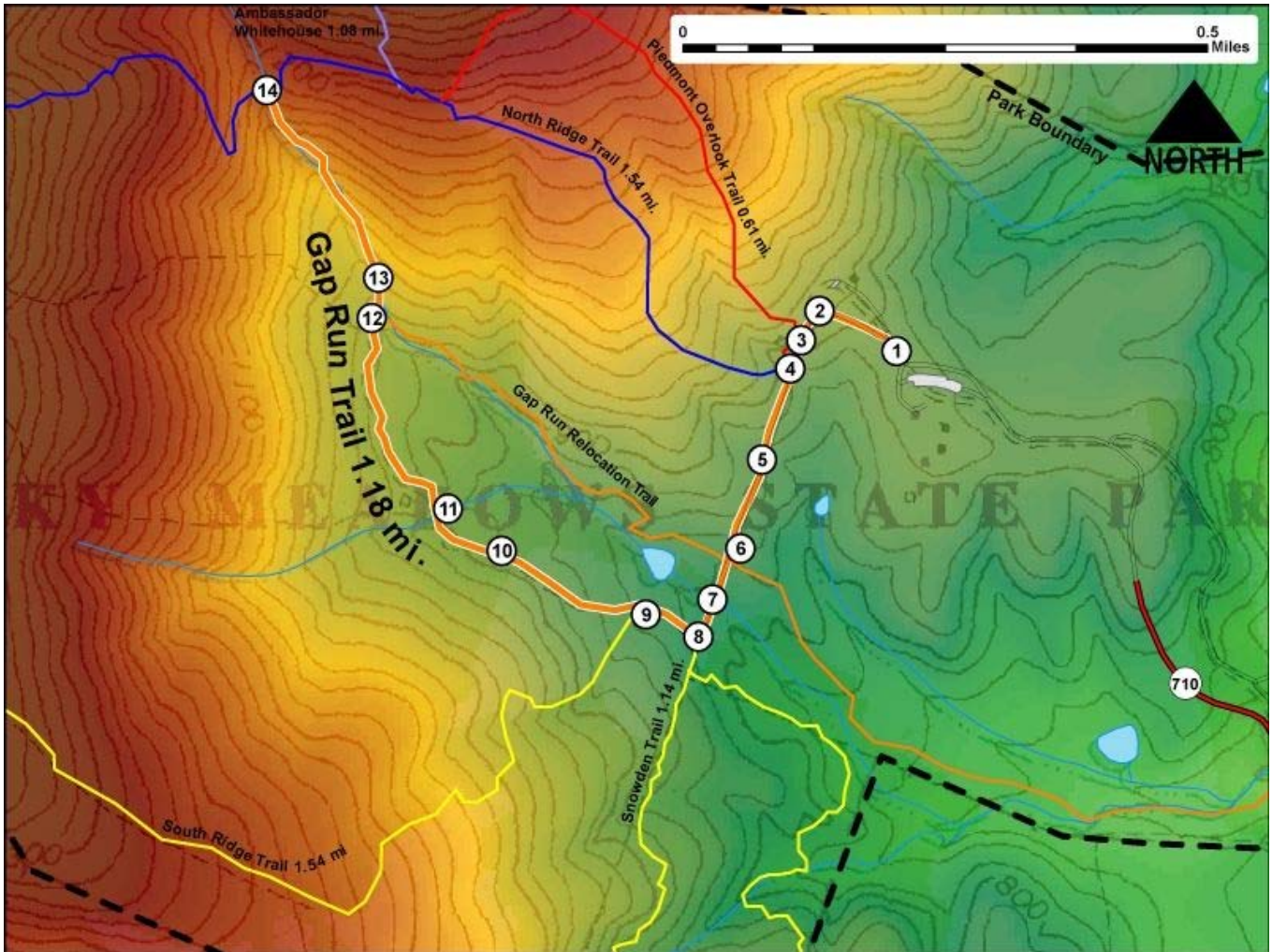


Printed from VirginiaOutdoors.net
Sky Meadows State Park
Gap Run Trail Map - Blaze Color: Orange



1. GPS: Lat. 38° 59.527, Lon. -77° 57.996
Gap Run Trailhead near Visitor Center Parking Area
2. GPS: Lat. 38° 59.56, Lon. -77° 58.077
Trail follows gravel service drive.
3. GPS: Lat. 38° 59.527, Lon. -77° 58.097
Trail and road cross creek.
4. GPS: Lat. 38° 59.513, Lon. -77° 58.109
Gap Run Trail and Piedmont Overlook and North Ridge Trailheads access from gravel service drive.
5. GPS: Lat. 38° 59.438, Lon. -77° 58.139
Interpretive Panel
6. GPS: Lat. 38° 59.364, Lon. -77° 58.173
Interpretive Panel
7. GPS: Lat. 38° 59.322, Lon. -77° 58.193
Trail and road cross creek.
8. GPS: Lat. 38° 59.291, Lon. -77° 58.208
Trail turns sharply away from gravel service drive. Intersection with Snowden Trailhead.
9. GPS: Lat. 38° 59.318, Lon. -77° 58.264
Intersection of the South Ridge Trail and the Gap Run Trail.
10. GPS: Lat. 38° 59.363, Lon. -77° 58.417
Gate and 'stile' or pair of steps that allow hikers to cross fences or walls.
11. GPS: Lat. 38° 59.398, Lon. -77° 58.473
Primitive Camp Sites #1 – 11 and pit toilets
12. GPS: Lat. 38° 59.557, Lon. -77° 58.553
Trail crosses creek
13. GPS: Lat. 38° 59.59, Lon. -77° 58.546

Bench

14. GPS: Lat. 38° 59.746, Lon. -77° 58.663

Intersection of the North Ridge Trail and the Gap Run Trail.

This project made possible in part by a grant from:

