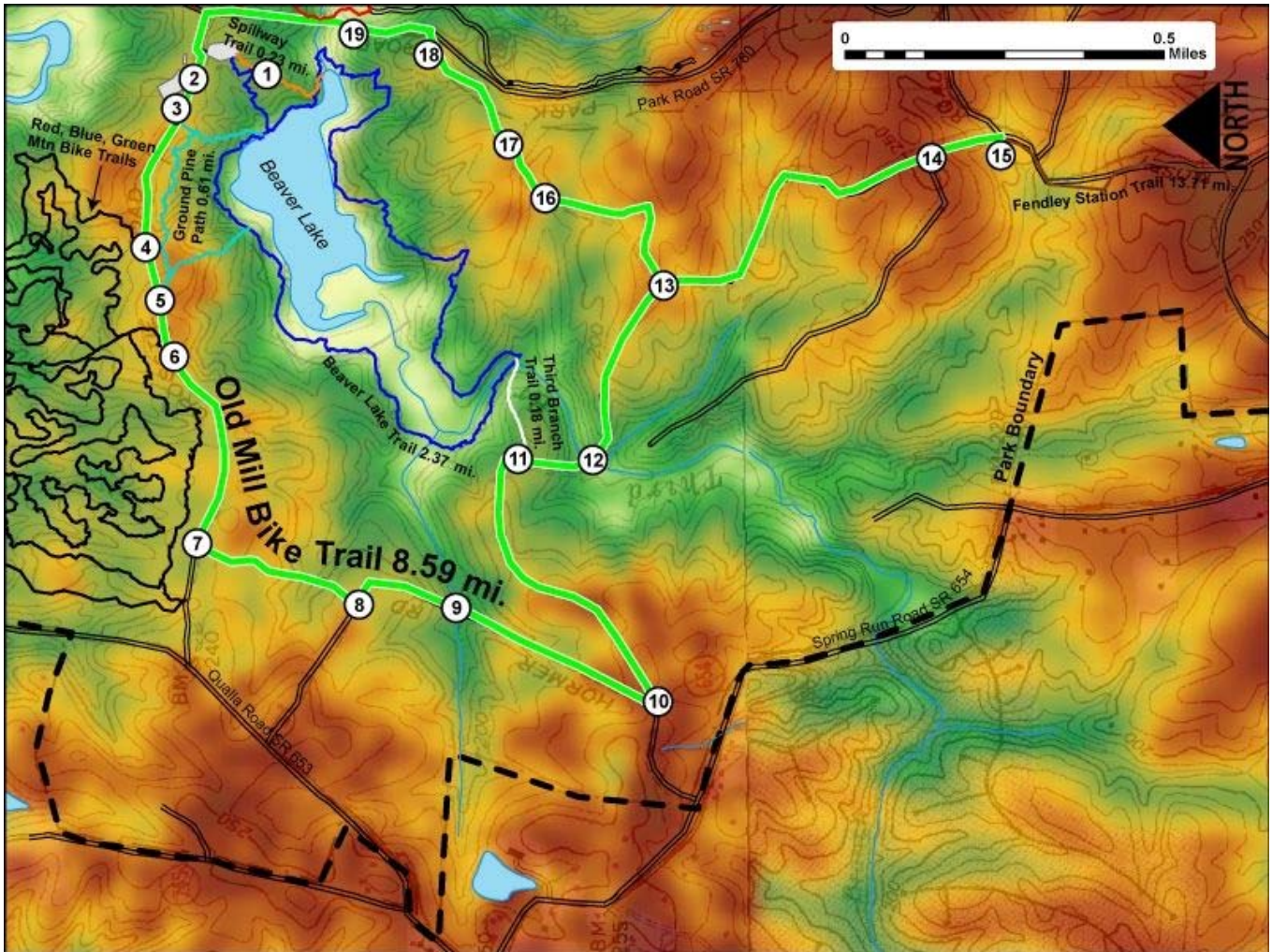


Printed from VirginiaOutdoors.net  
**Pocahontas State Park**  
**Old Mill Bicycle Trail Map - Blaze Color: Green**



1. GPS: Lat. 37° 23.154, Lon. -77° 34.946  
 CCC Museum Parking Area and access for Old Mill Bicycle Trail and Fendley Station Trail
2. GPS: Lat. 37° 23.254, Lon. -77° 34.952  
 Old Mill and Fendley Station Trails follow Crostic Road FR270
3. GPS: Lat. 37° 23.278, Lon. -77° 35.026  
 Ground Pine Connector Trail Intersects with Fendly Station and Old Mill Bicycle Trails at Crostic Road FR270.
4. GPS: Lat. 37° 23.322, Lon. -77° 35.24  
 Intersection with Green Mountain Bike Trail (Beginner)
5. GPS: Lat. 37° 23.303, Lon. -77° 35.33  
 Ground Pine Connector Trail Intersects with Fendly Station and Old Mill Bicycle Trails at Crostic Road FR270.
6. GPS: Lat. 37° 23.283, Lon. -77° 35.427  
 Intersection with Blue (Intermediate) and Red (Expert) Mountain Bike Trails
7. GPS: Lat. 37° 23.255, Lon. -77° 35.746  
 Bench near Intersection of Trail and extension of Crostic Rd. FR270. West on FR270 to Mountain Bike Trail access and to Qualla Rd. SR653
8. GPS: Lat. 37° 23.035, Lon. -77° 35.853  
 Trail Intersects with Horner Forest Rd. FR260. West to Qualla Rd. SR653
9. GPS: Lat. 37° 22.902, Lon. -77° 35.86  
 Bridge over creek
10. GPS: Lat. 37° 22.628, Lon. -77° 36.023  
 Trail Intersects with Bottoms Forest Rd. FR250. West to Spring Run Rd. SR654
11. GPS: Lat. 37° 22.816, Lon. -77° 35.606  
 Trail Intersects with Third Branch Trail with access to Old Mill site and Beaver Lake Trail
12. GPS: Lat. 37° 22.714, Lon. -77° 35.61  
 Bridge over creek
13. GPS: Lat. 37° 22.615, Lon. -77° 35.313

Fork in trail. Trail to South and West is Old Mill and Fendley Station Trails. Trail to East is a continuation of the Old Mill Trail loop.

14. GPS: Lat. 37° 22.248, Lon. -77° 35.1

Bench at Intersection of trail and TR251. TR251 is not a bicycle trail.

15. GPS: Lat. 37° 22.153, Lon. -77° 35.097

Fork in trail. Old Mill Trail continues to East on TR240 to Park Office and Contact Station. Fendley Station Trail continues South on Mosby Forest Rd. FR240.

16. GPS: Lat. 37° 22.776, Lon. -77° 35.162

Bench near trail

17. GPS: Lat. 37° 22.825, Lon. -77° 35.07

Short connector path to Park Road SR780

18. GPS: Lat. 37° 22.933, Lon. -77° 34.915

Short connector path to Park Road SR780

19. GPS: Lat. 37° 23.035, Lon. -77° 34.878

Intersection with Powhatan Trail Access

This project made possible in part by a grant from:

