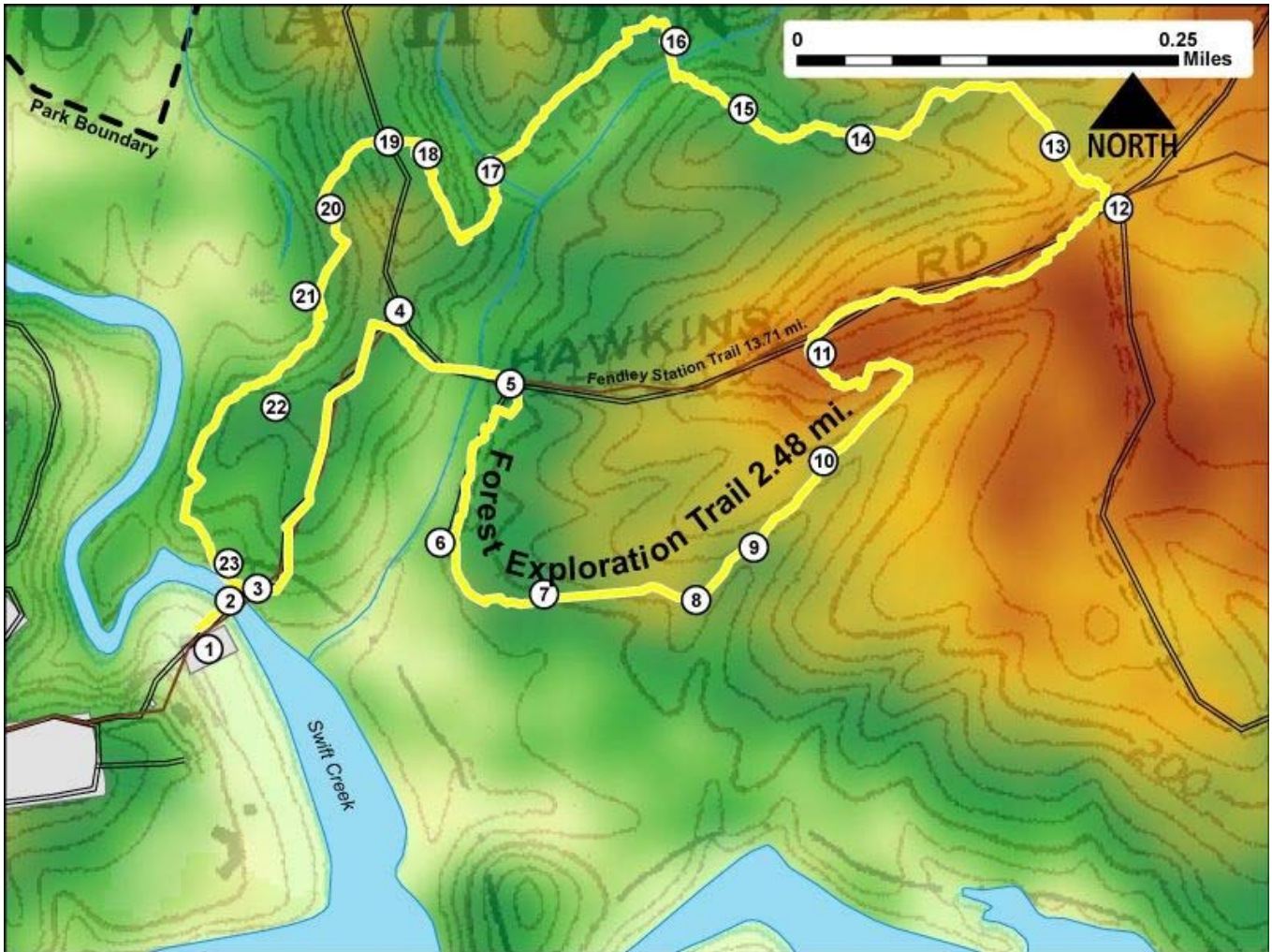


Printed from VirginiaOutdoors.net
Pocahontas State Park
Forest Exploration Trail Map - Blaze Color: Yellow



1. GPS: Lat. 37° 23.364, Lon. -77° 34.57
Trail Parking with access to Fendley Station Trail and Forest Exploration Trail.
2. GPS: Lat. 37° 23.391, Lon. -77° 34.554
Trail crosses bridge over Swift Creek near the Boathouse
3. GPS: Lat. 37° 23.396, Lon. -77° 34.545
Fork in trail signals beginning of Forest Exploration Loop. Portions of trail are shared with Fendley Station Trail.
4. GPS: Lat. 37° 23.556, Lon. -77° 34.431
Trail turns onto Hawkins Forest Rd. FR110. Bench and Interpretive Panel nearby.
5. GPS: Lat. 37° 23.513, Lon. -77° 34.352
Trail exits FR110.
6. GPS: Lat. 37° 23.423, Lon. -77° 34.403
Bench near trail
7. GPS: Lat. 37° 23.393, Lon. -77° 34.329
Bench near trail
8. GPS: Lat. 37° 23.389, Lon. -77° 34.221
Interpretive Panel
9. GPS: Lat. 37° 23.419, Lon. -77° 34.179
Bench near trail
10. GPS: Lat. 37° 23.468, Lon. -77° 34.129
Bench and Interpretive Panel near trail
11. GPS: Lat. 37° 23.529, Lon. -77° 34.131
Bench and Interpretive Panel near trail. Trail rejoins FR110 and Fendley Station Trail.
12. GPS: Lat. 37° 23.61, Lon. -77° 33.916
Bench and Interpretive Panel near trail. Trail turns away from FR110 and Fendley Station Trail.
13. GPS: Lat. 37° 23.646, Lon. -77° 33.961

Interpretive Panel

14. GPS: Lat. 37° 23.651, Lon. -77° 34.1

Bench near trail

15. GPS: Lat. 37° 23.669, Lon. -77° 34.183

Interpretive Panel

16. GPS: Lat. 37° 23.708, Lon. -77° 34.231

Bench and Interpretive Panel near Boardwalk

17. GPS: Lat. 37° 23.635, Lon. -77° 34.365

Bench and Interpretive Panel near Bridge

18. GPS: Lat. 37° 23.645, Lon. -77° 34.41

Bench and Interpretive Panel near trail

19. GPS: Lat. 37° 23.652, Lon. -77° 34.437

Trail crosses Hawkins Forest Rd. FR110.

20. GPS: Lat. 37° 23.614, Lon. -77° 34.479

Interpretive Panel near Bridge

21. GPS: Lat. 37° 23.565, Lon. -77° 34.498

Bench and Interpretive Panel near trail

22. GPS: Lat. 37° 23.502, Lon. -77° 34.52

Bench and Interpretive Panel near trail

23. GPS: Lat. 37° 23.405, Lon. -77° 34.555

Bench near trail

This project made possible in part by a grant from:

