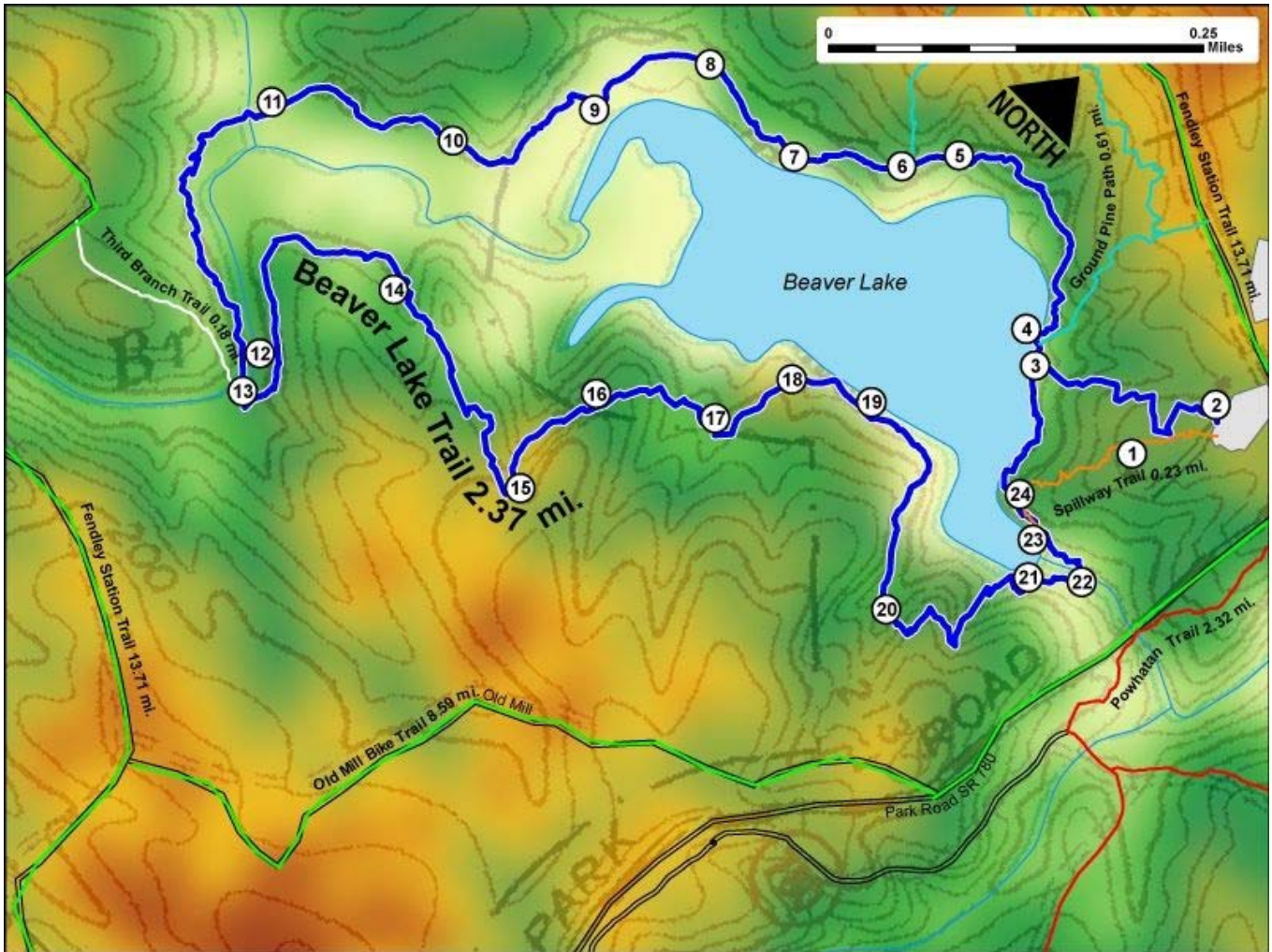


Printed from VirginiaOutdoors.net
Pocahontas State Park
Beaver Lake Trail Map - Blaze Color: Blue



1. GPS: Lat. 37° 23.154, Lon. -77° 34.946
CCC Museum Parking Area and trailhead access for Beaver Lake and Spillway Trails
2. GPS: Lat. 37° 23.207, Lon. -77° 34.926
Beaver Lake Entrance Trailhead
3. GPS: Lat. 37° 23.15, Lon. -77° 35.04
Intersection of Entrance Trail and Main Loop
4. GPS: Lat. 37° 23.162, Lon. -77° 35.063
Floating Wildlife Observation Platform and nearby Intersection with Ground Pine Path Trail
5. GPS: Lat. 37° 23.206, Lon. -77° 35.186
Bridge on trail
6. GPS: Lat. 37° 23.178, Lon. -77° 35.211
Intersection with Ground Pine Path Trail
7. GPS: Lat. 37° 23.138, Lon. -77° 35.271
Lake Overlook with bench
8. GPS: Lat. 37° 23.143, Lon. -77° 35.362
Boardwalk
9. GPS: Lat. 37° 23.077, Lon. -77° 35.399
Wildlife Observation Platform with views of the lake
10. GPS: Lat. 37° 23.007, Lon. -77° 35.456
Steps on trail with bench nearby
11. GPS: Lat. 37° 22.949, Lon. -77° 35.57
Boardwalk
12. GPS: Lat. 37° 22.835, Lon. -77° 35.455
Trail crosses creek near site of old mill. Interpretive panel nearby.
13. GPS: Lat. 37° 22.818, Lon. -77° 35.438

Intersection of Third Branch and Beaver Lake Trails

14. GPS: Lat. 37° 22.926, Lon. -77° 35.404

On trail

15. GPS: Lat. 37° 22.89, Lon. -77° 35.245

Hairpin turn in trail marked by directional sign

16. GPS: Lat. 37° 22.96, Lon. -77° 35.253

Bench on trail

17. GPS: Lat. 37° 22.998, Lon. -77° 35.179

Bridge on trail

18. GPS: Lat. 37° 23.045, Lon. -77° 35.159

Directional sign near lake shore

19. GPS: Lat. 37° 23.068, Lon. -77° 35.106

Bench with overlook of lake

20. GPS: Lat. 37° 22.989, Lon. -77° 34.993

Bridge on trail

21. GPS: Lat. 37° 23.059, Lon. -77° 34.936

Overlook with view of dam

22. GPS: Lat. 37° 23.079, Lon. -77° 34.906

Bridge on trail. Portion of trail is shared with Spillway Trail

23. GPS: Lat. 37° 23.077, Lon. -77° 34.953

Overlook with view of dam

24. GPS: Lat. 37° 23.091, Lon. -77° 34.982

Steps and Intersection with Spillway Trail

This project made possible in part by a grant from:

