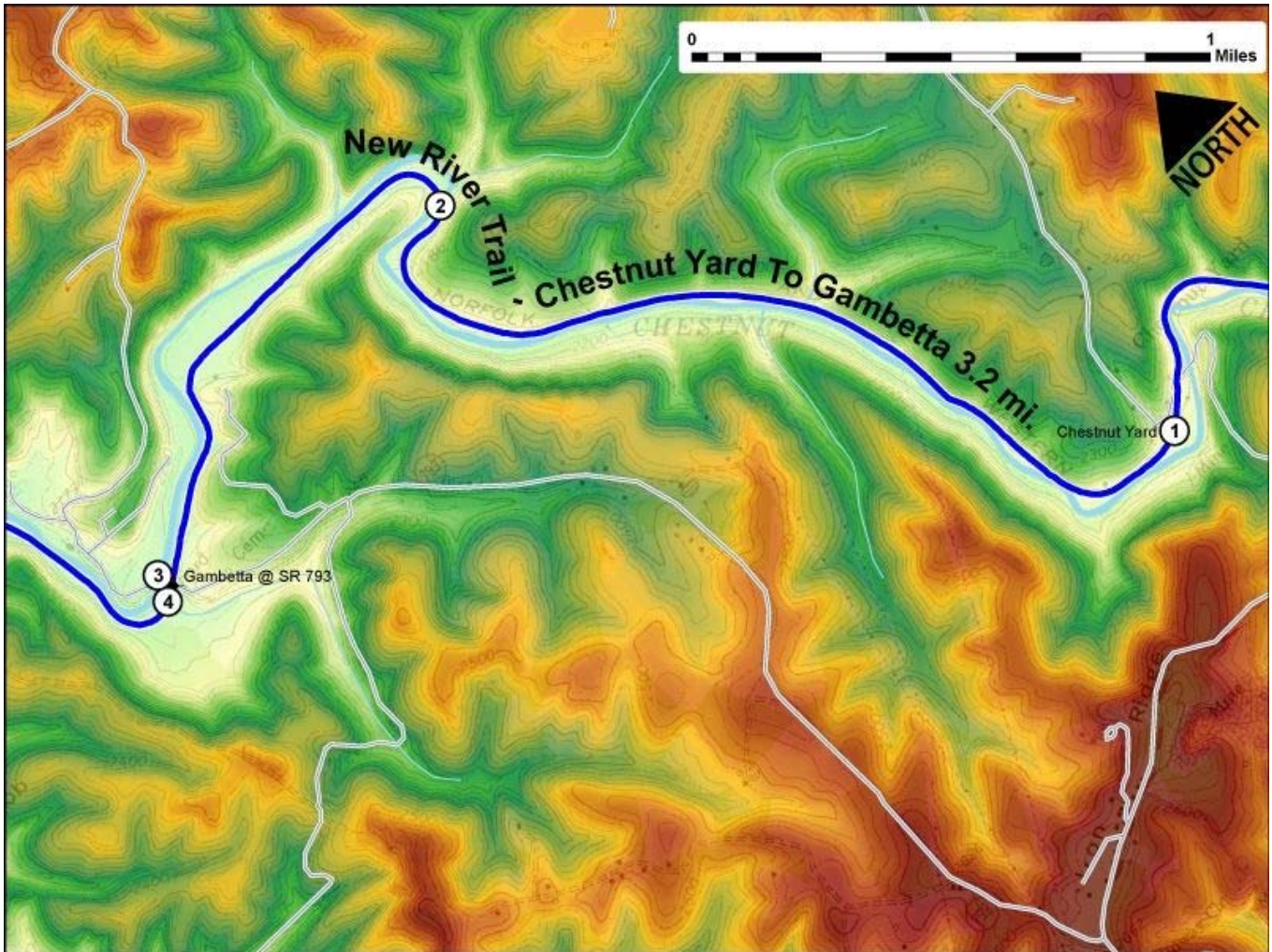


Printed from VirginiaOutdoors.net  
**New River Trail State Park (Foster Falls)**  
**Chestnut Yard to Gambetta Map - Blaze Color:**



1. GPS: Lat. 36° 43.319, Lon. -80° 55.095  
MP 45.5: Chestnut Yard was a stop for the railroad where fuel and water could be replaced and where locomotives, such as those used as “helpers” on longer trains climbing up the grade from Lone Ash, could be turned around by using the turntable. Look for the remains of the old platform turntable half buried in the clearing.
2. GPS: Lat. 36° 44.44, Lon. -80° 55.882  
MP 43.4: A spectacular 200' long, curved steel Deck Plate Girder bridge that crosses the creek for the fifth time since departing Galax.
3. GPS: Lat. 36° 44.275, Lon. -80° 56.855  
MP 42.3: There is a short 30' bridge crossing a seasonal creek a few yards north of milepost 42.3 at Gambetta where the trail crosses Gambetta Rd. SR 793. The town was home to the Nuckolls family who were pioneer settlers in Grayson County. Within sight of the trail you can see a marble shaft marking the cemetery and resting place of many of the family members.
4. GPS: Lat. 36° 44.273, Lon. -80° 56.86  
Gambetta Parking: Take Route 58 to Galax; go north on Route 887 to Cliffview Road (Route 721). Take Route 721 north past Cliffview to Route 607. Turn right on Route 607 and go 1.5 miles. Turn left on Route 743 and go to Gambetta.

This project made possible in part by a grant from:

