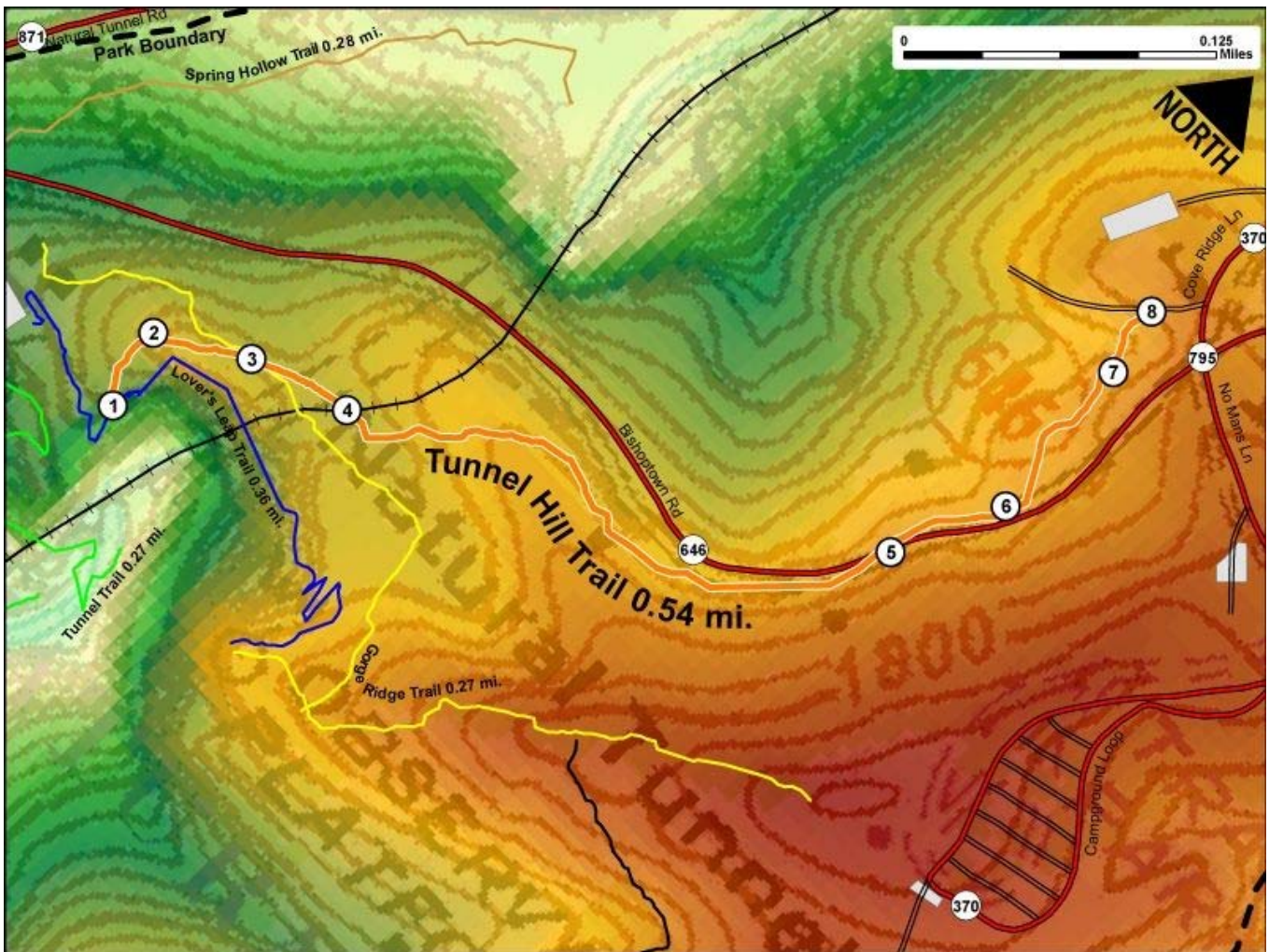


Printed from VirginiaOutdoors.net
Natural Tunnel State Park
Tunnel Hill Trail Map - Blaze Color: Orange



1. GPS: Lat. 36° 42.141, Lon. -82° 44.699
South Trailhead at Intersection with Lover's Leap Trail
 2. GPS: Lat. 36° 42.168, Lon. -82° 44.71
Extensive section of stone steps
 3. GPS: Lat. 36° 42.187, Lon. -82° 44.673
Trail crosses Gorge Ridge Trail
 4. GPS: Lat. 36° 42.2, Lon. -82° 44.629
Trail is directly above the Natural Tunnel
 5. GPS: Lat. 36° 42.303, Lon. -82° 44.428
Trail crosses Bishoptown Road – Please use Caution!
 6. GPS: Lat. 36° 42.347, Lon. -82° 44.406
Wilderness Road Interpretive stop
 7. GPS: Lat. 36° 42.406, Lon. -82° 44.417
Picnic Shelter #1
 8. GPS: Lat. 36° 42.43, Lon. -82° 44.425
North Trailhead at Picnic Area near Picnic Area and Amphitheater Parking
- This project made possible in part by a grant from:

