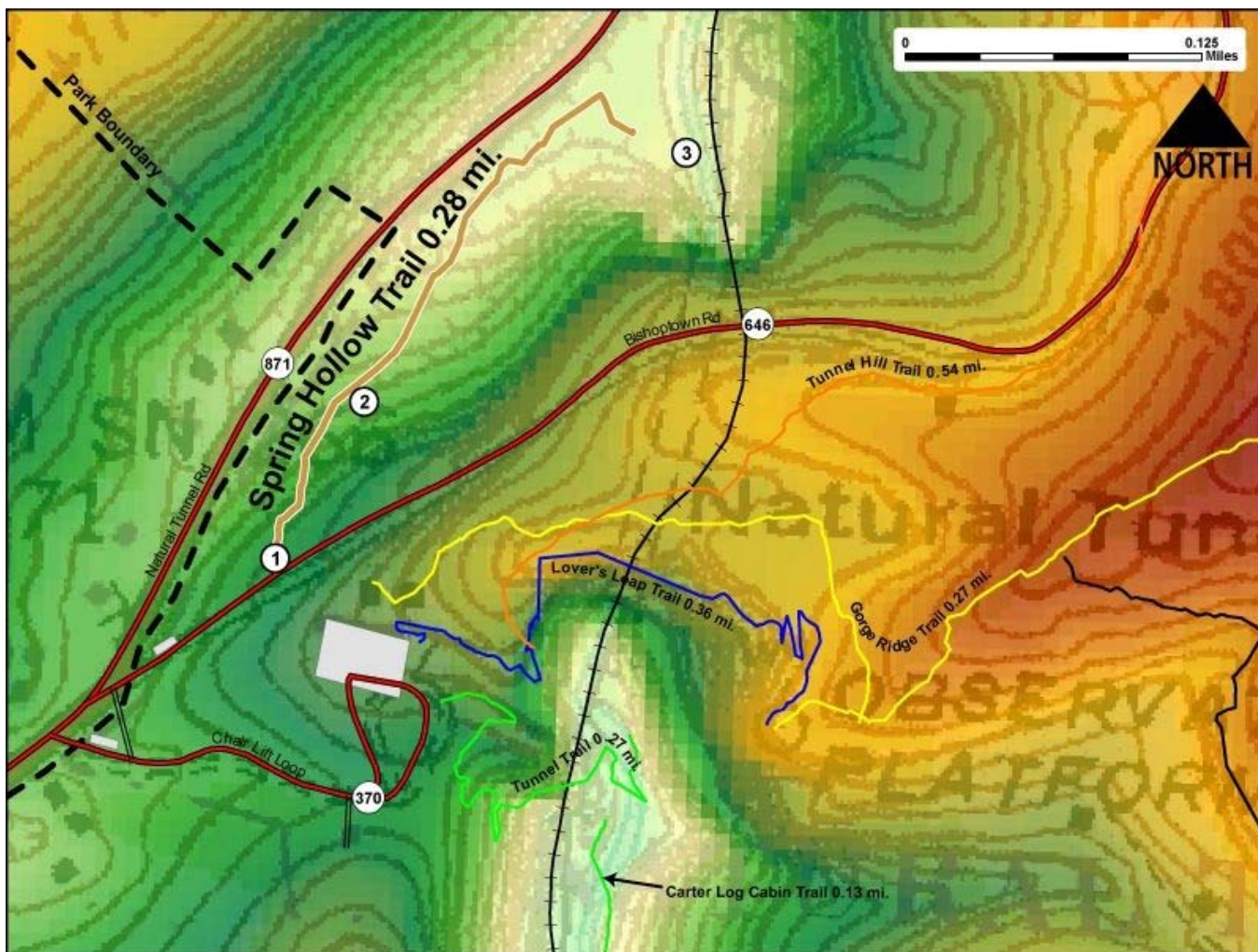


Printed from VirginiaOutdoors.net
Natural Tunnel State Park
Spring Hollow Trail Map - Blaze Color: Gold



1. GPS: Lat. 36° 42.168, Lon. -82° 44.816
Trailhead near Contact Station
2. GPS: Lat. 36° 42.227, Lon. -82° 44.778
Bench on Trail
3. GPS: Lat. 36° 42.323, Lon. -82° 44.637
Trail enters Hollow and descends to Stock Creek with view of North end of Natural Tunnel

This project made possible in part by a grant from:

