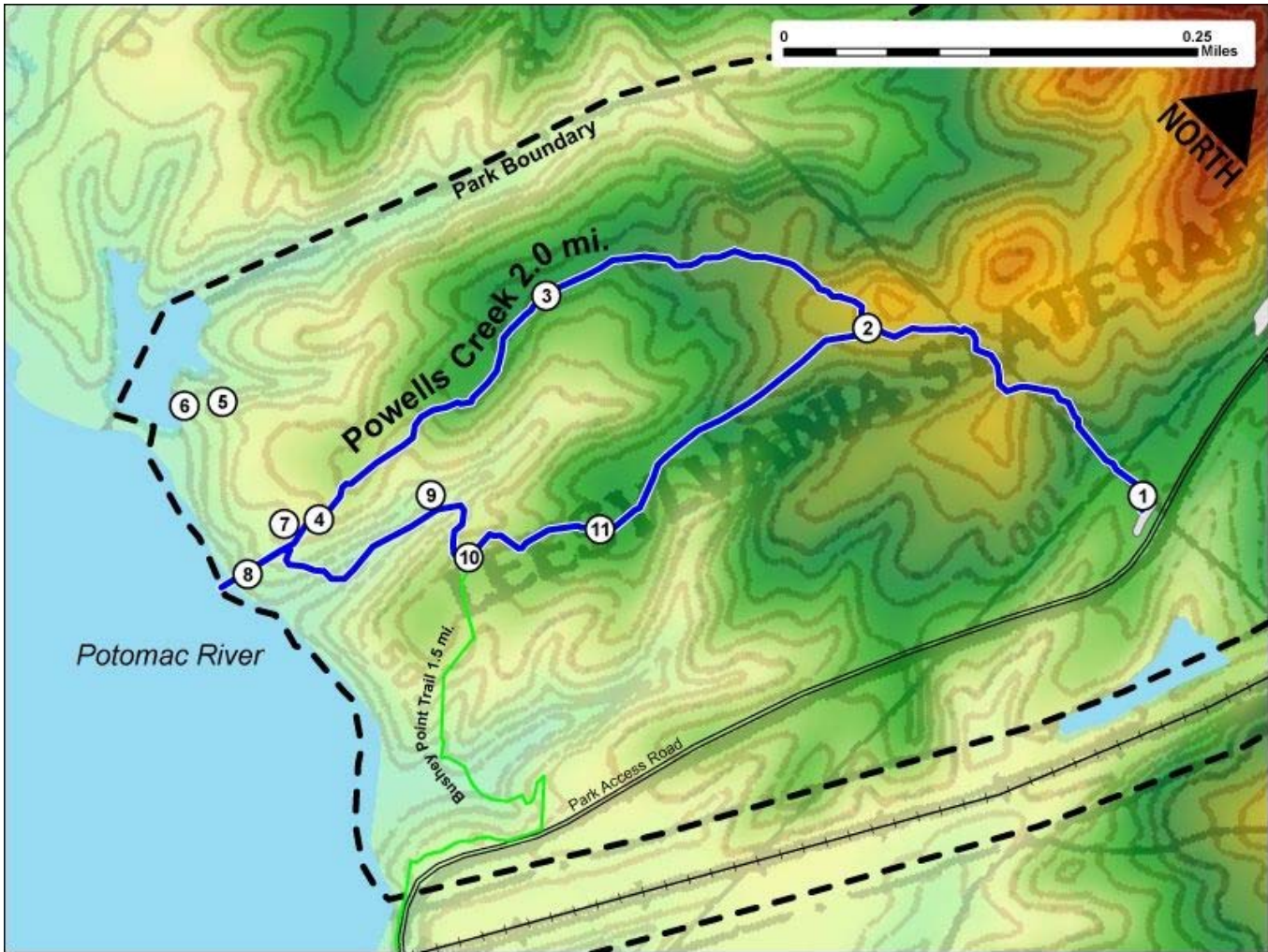


Printed from VirginiaOutdoors.net
Leesylvania State Park
Powell's Creek Trail Map - Blaze Color: Blue



1. GPS: Lat. 38° 35.556, Lon. 77° 15.691
Parking Area and Powell's Creek Trailhead
2. GPS: Lat. 38° 35.518, Lon. 77° 15.902
Fork in Trail. South branch connects to Bushey Point Trail.
3. GPS: Lat. 38° 35.413, Lon. 77° 16.071
On west branch of trail
4. GPS: Lat. 38° 35.245, Lon. 77° 16.076
Intersection with branch trail to Wildlife Observation Area
5. GPS: Lat. 38° 35.254, Lon. 77° 16.177
Overlook
6. GPS: Lat. 38° 35.238, Lon. 77° 16.193
Wildlife Observation Area
7. GPS: Lat. 38° 35.23, Lon. 77° 16.09
Fork in Trail. East branch connects to Bushey Point Trail
8. GPS: Lat. 38° 35.198, Lon. 77° 16.084
Steps lead to Wildlife Observation Area and Views of the River
9. GPS: Lat. 38° 35.295, Lon. 77° 16.033
Bridge and steps cross ravine
10. GPS: Lat. 38° 35.285, Lon. 77° 15.986
Intersection of Powell's Creek Trail and West Bushey Point Trailhead
11. GPS: Lat. 38° 35.344, Lon. 77° 15.936
Between two Interpretive Markers on east branch of trail

This project made possible in part by a grant from:

