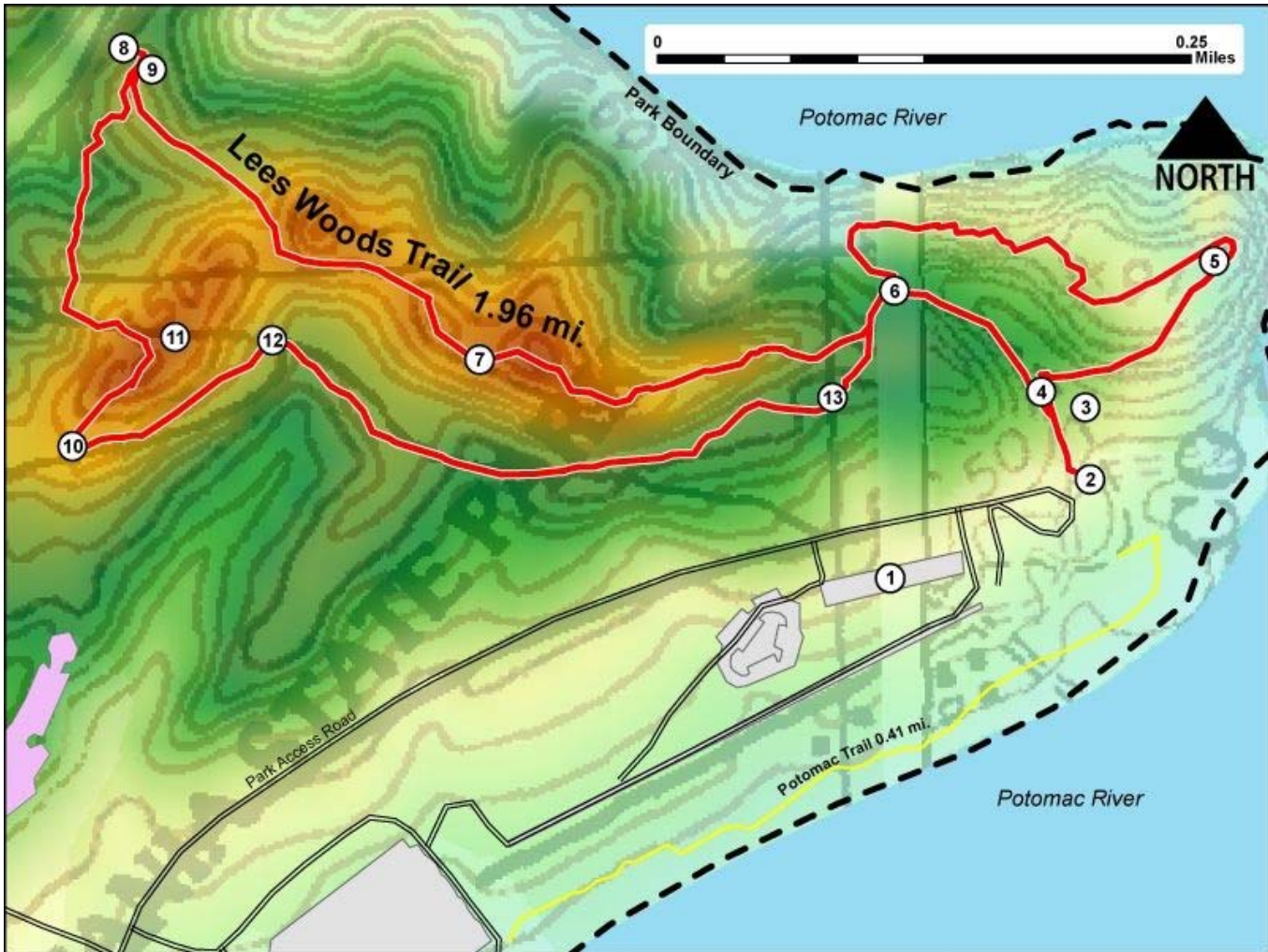


Printed from VirginiaOutdoors.net
Leesylvania State Park
Lee's Woods Trail Map - Blaze Color: Red



1. GPS: Lat. 38° 35.436, Lon. 77° 14.996
 Parking Area and nearby access to Lee's Woods and Potomac Trails
2. GPS: Lat. 38° 35.475, Lon. 77° 14.892
 Lee's Woods Trailhead
3. GPS: Lat. 38° 35.504, Lon. 77° 14.894
 Amphitheater East of Trail
4. GPS: Lat. 38° 35.511, Lon. 77° 14.917
 Fork in Trail. East to historic Freestone point Battery. North to Lee homestead area.
5. GPS: Lat. 38° 35.563, Lon. 77° 14.826
 Freestone Point Battery and overlook of the Potomac
6. GPS: Lat. 38° 35.553, Lon. 77° 14.992
 Intersection of the Freestone Point Loop and the Historic Area Loop sections of the Lee's Woods Trail.
7. GPS: Lat. 38° 35.527, Lon. 77° 15.208
 On Trail
8. GPS: Lat. 38° 35.656, Lon. 77° 15.391
 Trail reaches high point on edge of ravine with seasonal views of the railroad cut
9. GPS: Lat. 38° 35.647, Lon. 77° 15.376
 Lee Cemetery
10. GPS: Lat. 38° 35.494, Lon. 77° 15.42
 Hairpin turn in trail
11. GPS: Lat. 38° 35.538, Lon. 77° 15.366
 Lee Home Site
12. GPS: Lat. 38° 35.536, Lon. 77° 15.316
 Sharp turn in trail
13. GPS: Lat. 38° 35.51, Lon. 77° 15.025
 Fairfax Homestead Site

This project made possible in part by a grant from: