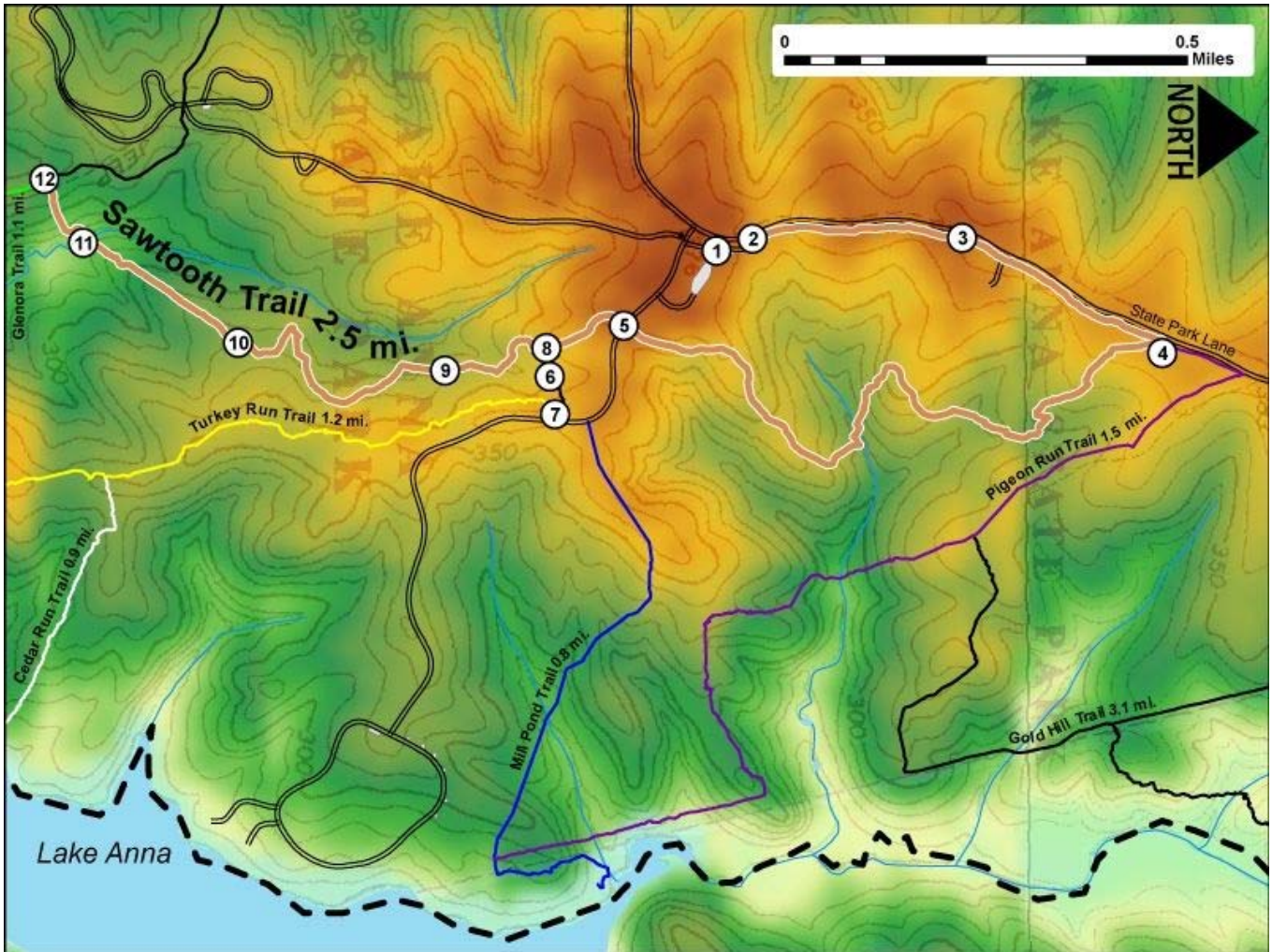


Printed from VirginiaOutdoors.net
Lake Anna State Park
Sawtooth Trail Map - Blaze Color: Tan



1. GPS: Lat. 38° 7.174, Lon. -77° 49.356
Office Parking and nearby Trailer Parking Areas
2. GPS: Lat. 38° 7.213, Lon. -77° 49.372
Sawtooth Trail access near Park Office
3. GPS: Lat. 38° 7.44, Lon. -77° 49.371
Trail follows State Park Lane
4. GPS: Lat. 38° 7.655, Lon. -77° 49.227
Intersection of Sawtooth Trail and West Pigeon Run Trailhead adjacent to State Park Lane
5. GPS: Lat. 38° 7.073, Lon. -77° 49.255
Trail crosses SR 7002 / Access to Cabins 1-10
6. GPS: Lat. 38° 6.993, Lon. -77° 49.2
Historic Sawmill Site and Interpretive Panel
7. GPS: Lat. 38° 6.998, Lon. -77° 49.134
Trailhead Parking Area for Sawtooth – Mill Pond and Turkey Run Trails
8. GPS: Lat. 38° 6.99, Lon. -77° 49.225
Intersection of Main Trail with Trailhead Access Path from Trailhead Parking Area
9. GPS: Lat. 38° 6.88, Lon. -77° 49.195
Marker on Trail
10. GPS: Lat. 38° 6.657, Lon. -77° 49.235
Marker on Trail
11. GPS: Lat. 38° 6.49, Lon. -77° 49.373
Bridge
12. GPS: Lat. 38° 6.448, Lon. -77° 49.461
Intersection of South Sawtooth Trailhead with Glenora Trail and the Campground Access Trail

This project made possible in part by a grant from:

