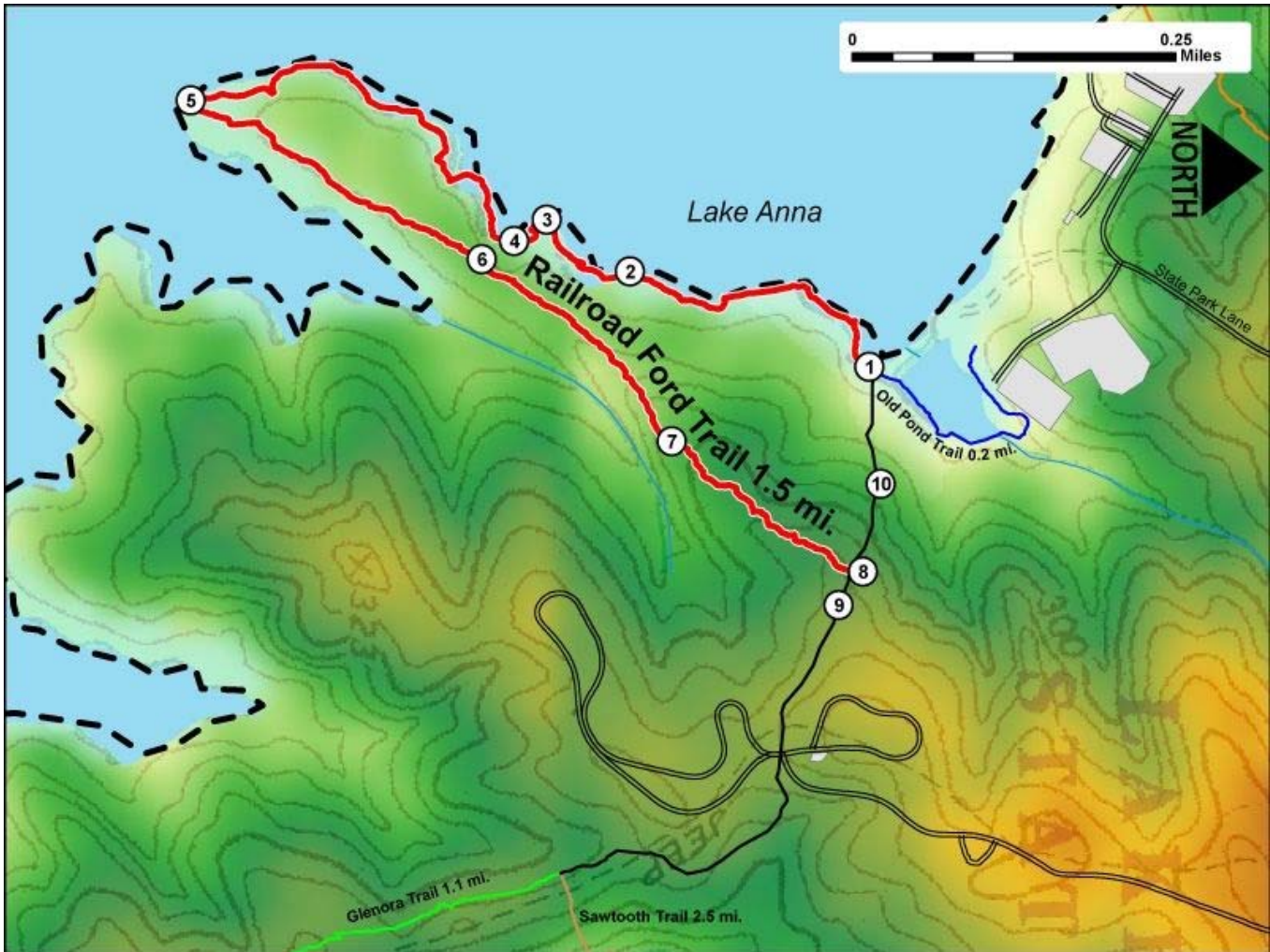


Printed from VirginiaOutdoors.net
Lake Anna State Park
Railroad Ford Trail Map - Blaze Color: Red



1. GPS: Lat. 38° 6.667, Lon. -77° 49.89
 Railroad Ford Trailhead near Old Pond and Visitor Center
2. GPS: Lat. 38° 6.5, Lon. -77° 49.972
 Small bridge and bench near the water's edge
3. GPS: Lat. 38° 6.445, Lon. -77° 50.017
 This small point offers beautiful views of Lake Anna and the surrounding hills.
4. GPS: Lat. 38° 6.417, Lon. -77° 49.999
 Double bridges
5. GPS: Lat. 38° 6.206, Lon. -77° 50.12
 Southern tip of peninsula. Trail returns to north from here.
6. GPS: Lat. 38° 6.401, Lon. -77° 49.984
 Trail follows ridge along center of peninsula
7. GPS: Lat. 38° 6.528, Lon. -77° 49.828
 Interpretive marker and former railroad bed to East of trail.
8. GPS: Lat. 38° 6.646, Lon. -77° 49.716
 Trail intersects with Campground Walkway. West to return to trailhead. East to Campground.
9. GPS: Lat. 38° 6.639, Lon. -77° 49.687
 Campground Walkway crosses former railroad bed. You can see remnants of the right-of-way north and south of the trail.
10. GPS: Lat. 38° 6.668, Lon. -77° 49.79
 On trail 0.1 miles from Trailhead

This project made possible in part by a grant from:

