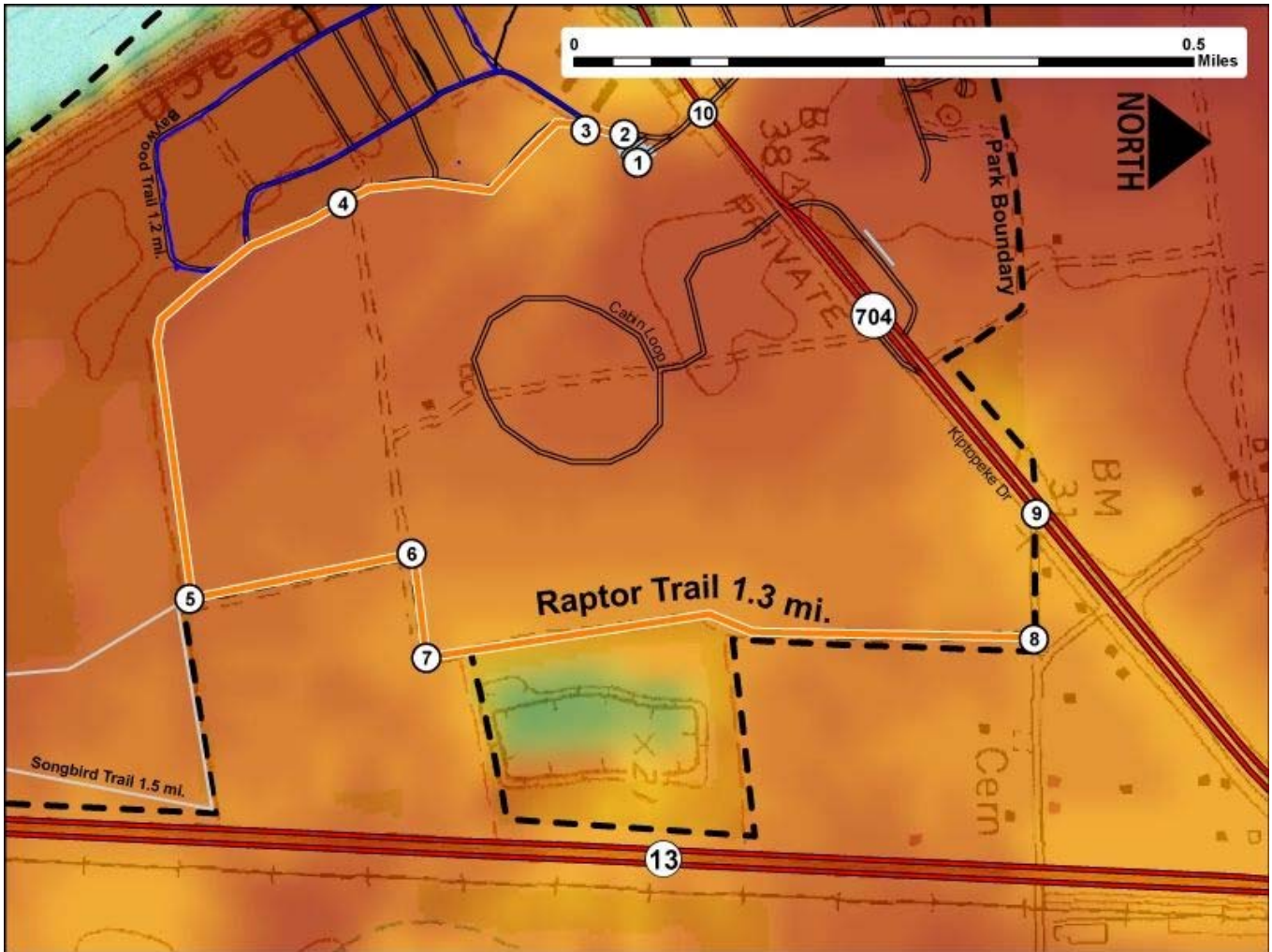


Printed from VirginiaOutdoors.net  
**Kiptopeke State Park**  
**Raptor Trail Map - Blaze Color: Orange**



1. GPS: Lat. 37° 10.15, Lon. -75° 58.817  
 Parking Area and access to trail network
2. GPS: Lat. 37° 10.14, Lon. -75° 58.832  
 West Trailhead near Parking Area
3. GPS: Lat. 37° 10.113, Lon. -75° 58.842  
 Fork in trail – West to Baywoods Trail and South to continue on Raptor Trail
4. GPS: Lat. 37° 9.941, Lon. -75° 58.778  
 Treeline to West of trail and fields to East
5. GPS: Lat. 37° 9.826, Lon. -75° 58.435  
 Intersection of Raptor Trail and Songbird Trail
6. GPS: Lat. 37° 9.983, Lon. -75° 58.469  
 Sharp 90° Turn as trail follows park boundary
7. GPS: Lat. 37° 9.992, Lon. -75° 58.378  
 Sharp 90° Turn as trail follows park boundary
8. GPS: Lat. 37° 10.419, Lon. -75° 58.38  
 Trailhead at Intersection with Butler's Bluff Dr.
9. GPS: Lat. 37° 10.422, Lon. -75° 58.492  
 Intersection of Butler's Bluff Dr. and Kiptopeke Dr.
10. GPS: Lat. 37° 10.196, Lon. -75° 58.854  
 Intersection of Kiptopeke Dr. and access to Trailhead Parking Area

This project made possible in part by a grant from:

