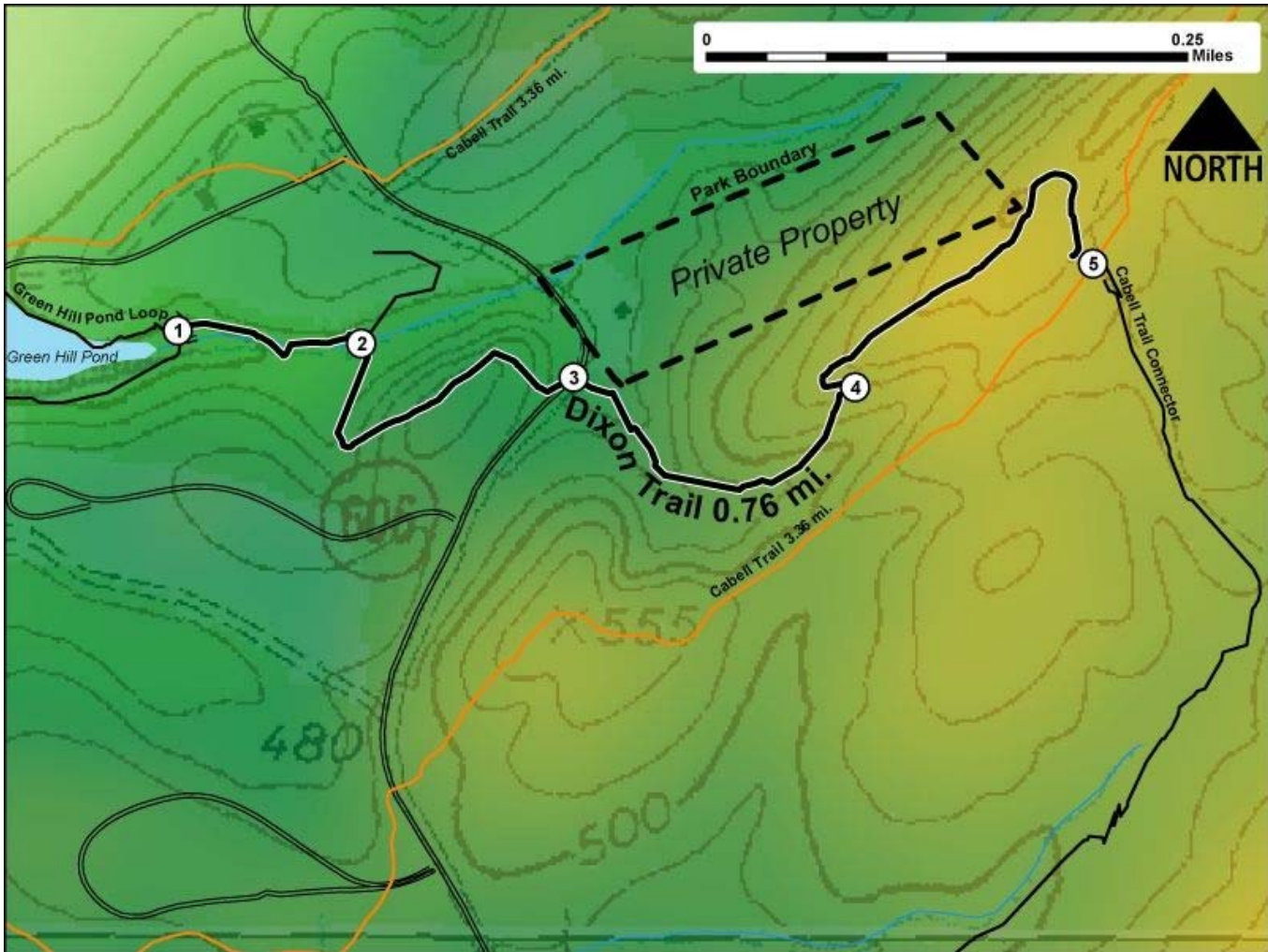


Printed from VirginiaOutdoors.net  
James River State Park  
Dixon Trail Map - Blaze Color:



1. GPS: Lat. 37° 37.779, Lon. -78° 48.85  
West Trailhead at Intersection with Green Hill Pond Loop Trail
2. GPS: Lat. 37° 37.773, Lon. -78° 48.745  
Fork in trail. North to Dump Station Area and Cabell Trail access.
3. GPS: Lat. 37° 37.758, Lon. -78° 48.624  
Trail crosses Park Road
4. GPS: Lat. 37° 37.754, Lon. -78° 48.465  
Short switchbacks as trail changes elevation
5. GPS: Lat. 37° 37.81, Lon. -78° 48.327  
Intersection of Cabell Connector and East Dixon Trailhead with Main Cabell Trail

This project made possible in part by a grant from:

