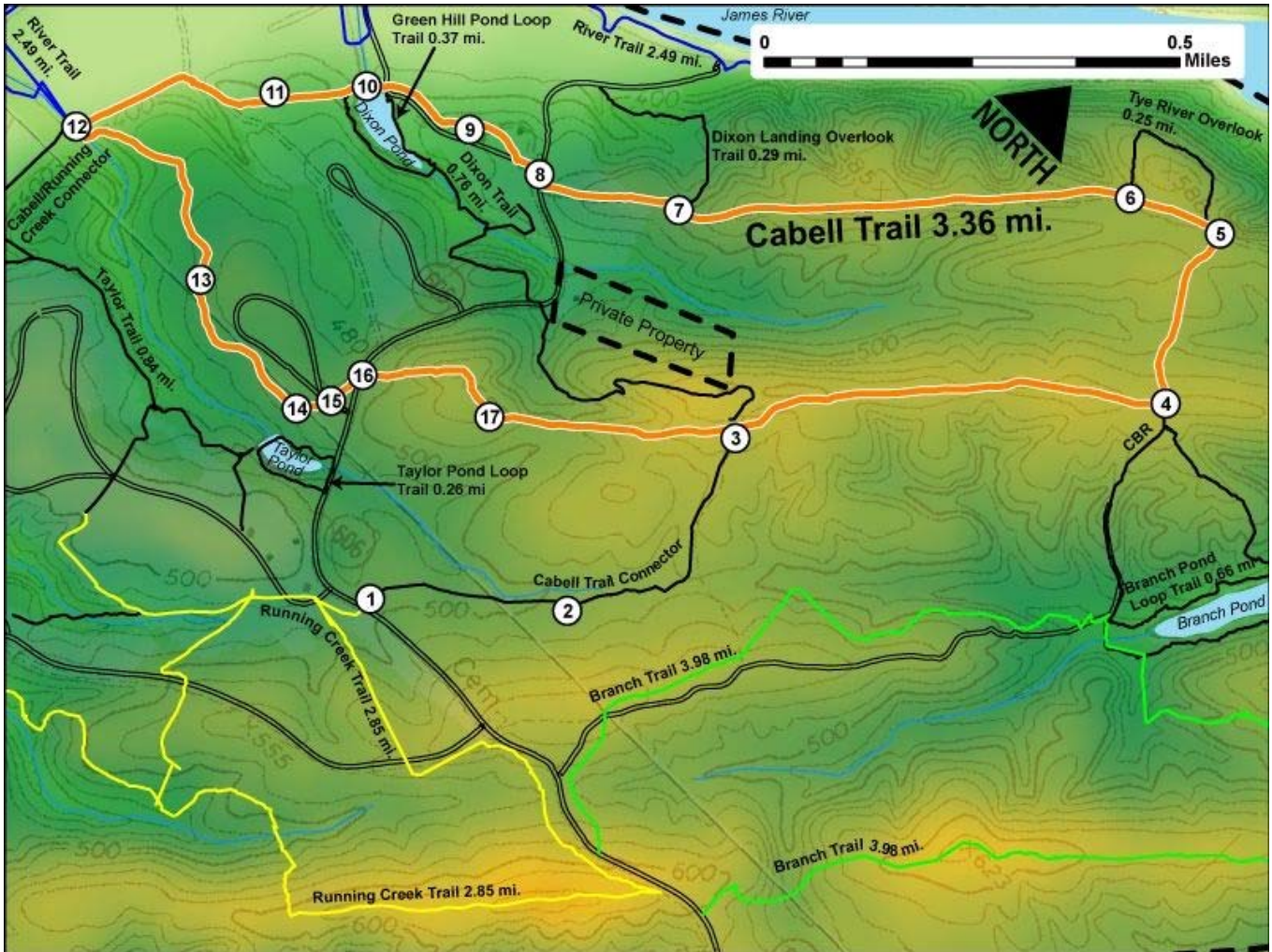


Printed from VirginiaOutdoors.net
James River State Park
Cabell Trail Map - Blaze Color: Orange



1. GPS: Lat. 37° 37.414, Lon. -78° 48.507
Trailhead Parking Area and access to Cabell and Running Creek Trails
2. GPS: Lat. 37° 37.557, Lon. -78° 48.321
On Cabell Connector near Directional Sign
3. GPS: Lat. 37° 37.81, Lon. -78° 48.327
Intersection of Cabell Connector and Dixon Trail with Main Cabell Trail
4. GPS: Lat. 37° 38.148, Lon. -78° 47.952
Intersection of Cabell Trail and Branch Trail Connector
5. GPS: Lat. 37° 38.314, Lon. -78° 48.06
Trail turns sharply near Intersection with East branch of the Tye River Overlook Trail
6. GPS: Lat. 37° 38.274, Lon. -78° 48.176
Intersection of Cabell Trail and West branch of Tye River Overlook Trail
7. GPS: Lat. 37° 37.93, Lon. -78° 48.584
Intersection of Cabell Trail and Dixon Landing Overlook Trail
8. GPS: Lat. 37° 37.852, Lon. -78° 48.746
Trail crosses Park Road near Dump Station
9. GPS: Lat. 37° 37.834, Lon. -78° 48.853
Trail passes Restrooms
10. GPS: Lat. 37° 37.789, Lon. -78° 48.989
Trail crosses Park Road and Green Hill Pond Dam
11. GPS: Lat. 37° 37.716, Lon. -78° 49.068
Trail passes Amphitheater
12. GPS: Lat. 37° 37.544, Lon. -78° 49.22
Intersection of Cabell Trail with the River Trail and Cabell / Running Creek Connector
13. GPS: Lat. 37° 37.523, Lon. -78° 48.963
On Trail near Campground
14. GPS: Lat. 37° 37.499, Lon. -78° 48.753
On Trail near Taylor Pond

15. GPS: Lat. 37° 37.531, Lon. -78° 48.728

Trail crosses Campground Road

16. GPS: Lat. 37° 37.573, Lon. -78° 48.723

Trail crosses Park Road

17. GPS: Lat. 37° 37.637, Lon. -78° 48.567

Directional Sign on Trail

This project made possible in part by a grant from:

