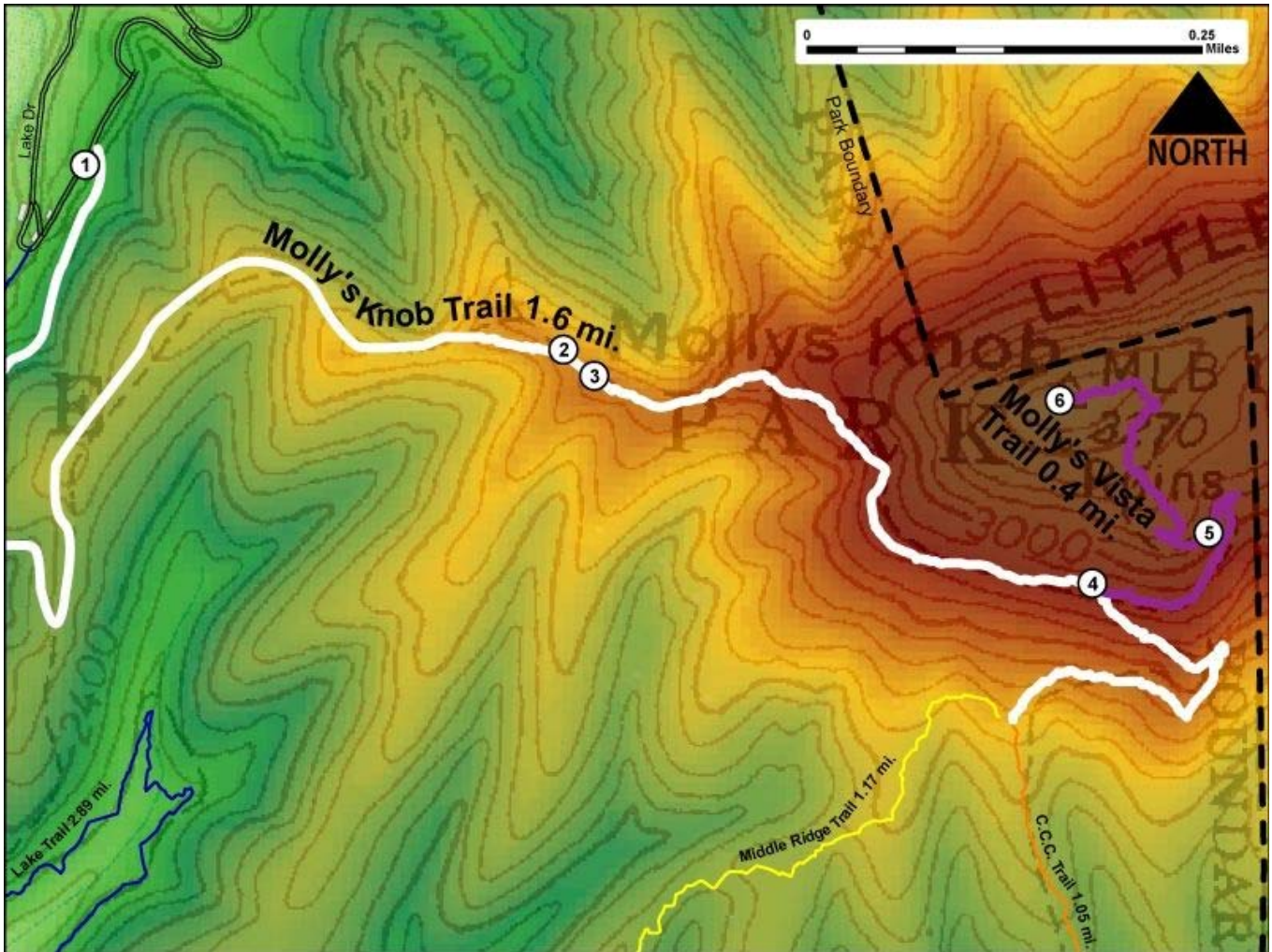


Printed from VirginiaOutdoors.net
Hungry Mother State Park
Molly's Knob Trail Map - Blaze Color: White



- 1. GPS: Lat. 36° 53.158, Lon. -81° 31.272
Molly's Knob Trailhead – Elev. 2239'
- 2. GPS: Lat. 36° 53.065, Lon. -81° 30.94
Trail becomes steeper. Stay on trail.
- 3. GPS: Lat. 36° 53.051, Lon. -81° 30.918
On trail. You may spot a nearby tree with nails in it.
- 4. GPS: Lat. 36° 52.946, Lon. -81° 30.572
Intersection with Molly's Vista Trail. 0.4 miles to summit.
- 5. GPS: Lat. 36° 52.976, Lon. -81° 30.494
Steep switchbacks
- 6. GPS: Lat. 36° 53.046, Lon. -81° 30.598
End of Molly's Vista Trail and Highest Point in the Park – Elev. 3247'

This project made possible in part by a grant from:

