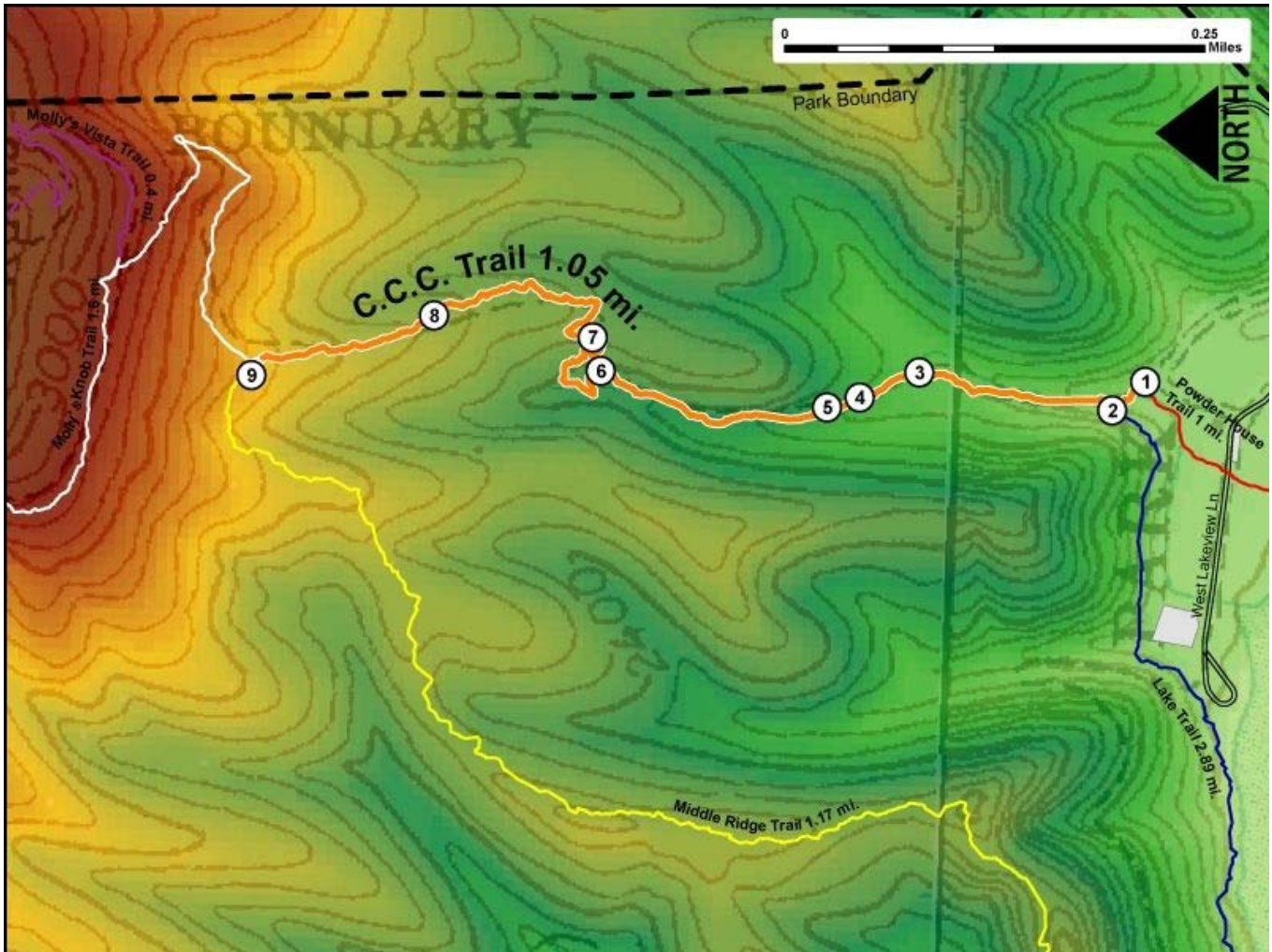


Printed from VirginiaOutdoors.net  
**Hungry Mother State Park**  
**CCC Trail Map - Blaze Color: Orange**



1. GPS: Lat. 36° 52.407, Lon. -81° 30.619  
C.C.C. Trailhead at Intersection with the Powderhouse Trail
2. GPS: Lat. 36° 52.424, Lon. -81° 30.638  
C.C.C. Trail Intersects with the Lake Trail
3. GPS: Lat. 36° 52.524, Lon. -81° 30.618  
Creek crossing. Area is thick with Rhododendron
4. GPS: Lat. 36° 52.555, Lon. -81° 30.635  
Bridge over Creek
5. GPS: Lat. 36° 52.571, Lon. -81° 30.642  
Bridge over Creek
6. GPS: Lat. 36° 52.689, Lon. -81° 30.623  
Bridge
7. GPS: Lat. 36° 52.694, Lon. -81° 30.602  
Short series of switchbacks
8. GPS: Lat. 36° 52.776, Lon. -81° 30.591  
On Trail
9. GPS: Lat. 36° 52.87, Lon. -81° 30.633  
Intersection of C.C.C. Trail, Molly's Knob Trail and the end of the Middle Ridge Trail

This project made possible in part by a grant from:

