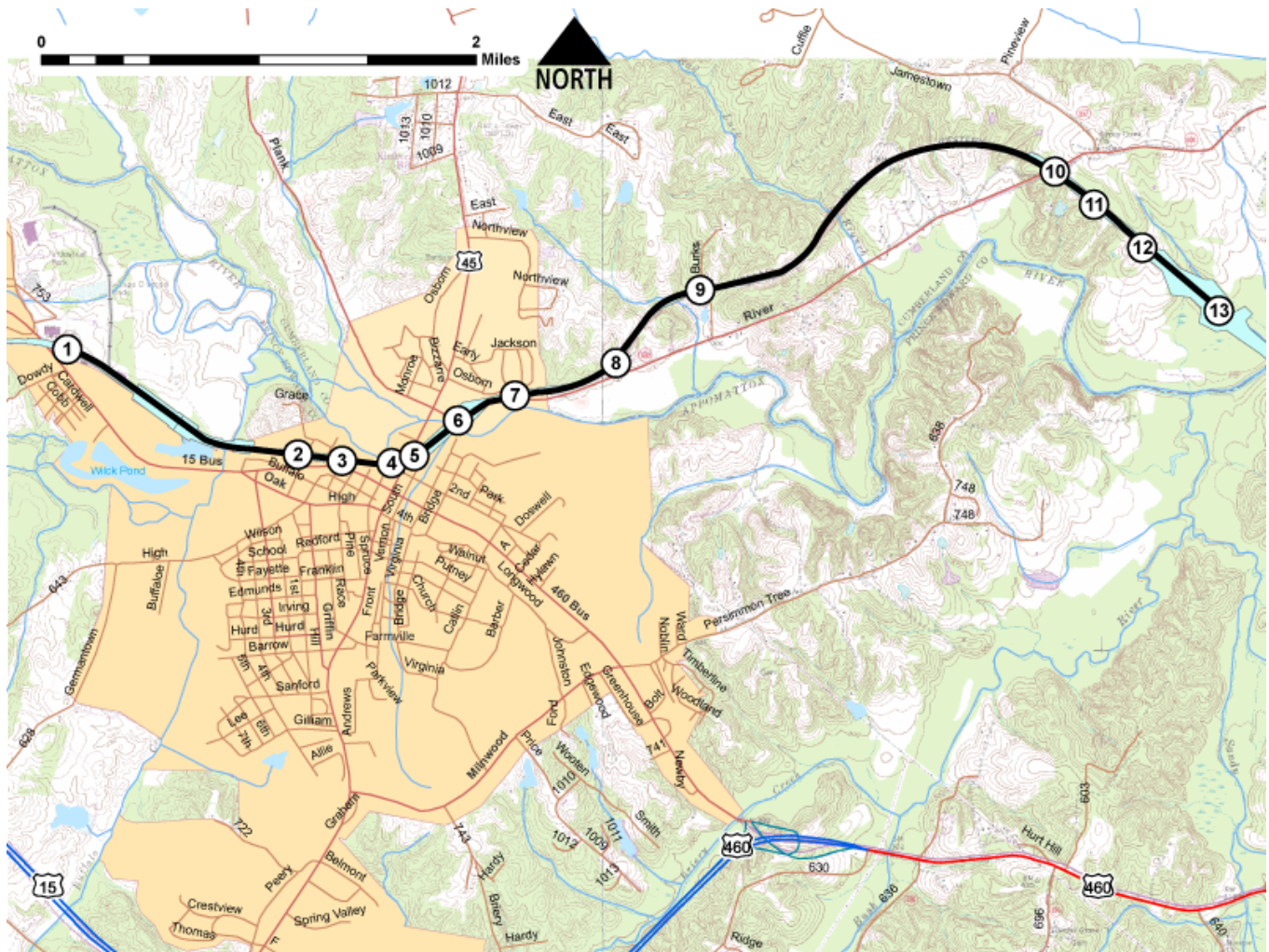


Printed from VirginiaOutdoors.com
High Bridge Trail State Park
Farmville to Highbridge Map - Blaze Color:



1. GPS: Lat. 37° 18.7368, Lon. -78° 25.2770
US 460 bridge, West Third Street, railroad bridge. Farmville area trailhead
2. GPS: Lat. 37° 18.2956, Lon. -78° 24.0227
Longwood University bridge
3. GPS: Lat. 37° 18.2683, Lon. -78° 23.7763
Trail crosses Appomattox Street between Farmville depot and Southern States
4. GPS: Lat. 37° 18.2554, Lon. -78° 23.5222
Trail crosses Mill Street. Railroad bridge - double span, 50 ft long
5. GPS: Lat. 37° 18.2752, Lon. -78° 23.4379
Trail crosses Main Street, US 45. On depot side curb
6. GPS: Lat. 37° 18.4300, Lon. -78° 23.2028
Trail crosses River Rd, Cumberland County Route 600. Railroad bridge
7. GPS: Lat. 37° 18.5357, Lon. -78° 22.9215
East Osborn Rd access
8. GPS: Lat. 37° 18.6604, Lon. -78° 22.4095
An unknown crossing
9. GPS: Lat. 37° 18.9501, Lon. -78° 21.9752
Trail crosses Burk's Rd, Route 702. Gate to one side
10. GPS: Lat. 37° 19.4218, Lon. -78° 20.2203
Trail crosses River Road, Cumberland County Route 600
11. GPS: Lat. 37° 19.2853, Lon. -78° 20.0161
Ragland property crossing
12. GPS: Lat. 37° 19.1194, Lon. -78° 19.7698
Mike Rice property crossing
13. GPS: Lat. 37° 18.8673, Lon. -78° 19.3946

High Bridge. Current east end of the trail. Picnic area nearby
This project made possible in part by a grant from:

