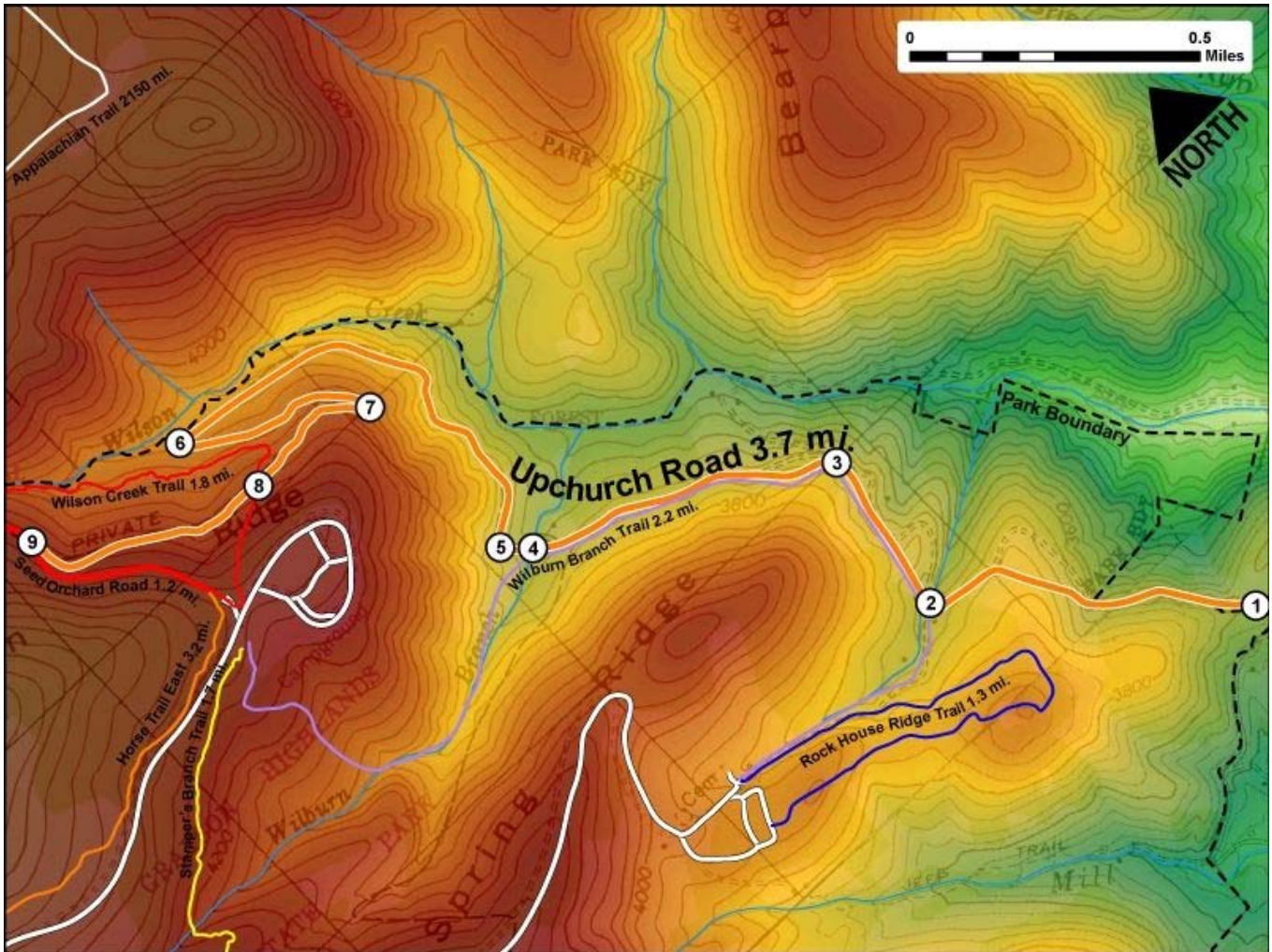


Printed from VirginiaOutdoors.net
Grayson Highlands State Park
Upchurch Road Trail Map - Blaze Color:



1. GPS: Lat. 36° 37.661, Lon. -81° 28.545
The Upchurch Road Trailhead (south). Accessible from Rock House Ridge Trail.
2. GPS: Lat. 36° 37.689, Lon. -81° 28.279
Trail crosses a branch
3. GPS: Lat. 36° 37.955, Lon. -81° 28.231
Trail begins to turn West following ridge.
4. GPS: Lat. 36° 38.184, Lon. -81° 28.729
Trail crosses Wilburn Branch.
5. GPS: Lat. 36° 38.193, Lon. -81° 28.793
Trail goes uphill then turns right and follows edge of Wilburn Ridge.
6. GPS: Lat. 36° 38.643, Lon. -81° 29.108
Switch backs begin up Wilburn Ridge.
7. GPS: Lat. 36° 38.484, Lon. -81° 28.806
Switch back enters second turn continuing up Wilburn Ridge.
8. GPS: Lat. 36° 38.523, Lon. -81° 29.049
Trail crosses Wilson Creek Trail.
9. GPS: Lat. 36° 38.684, Lon. -81° 29.432
The Upchurch Road Trailhead (north). Trail intersects with Seed Orchard Trail.

This project made possible in part by a grant from:

