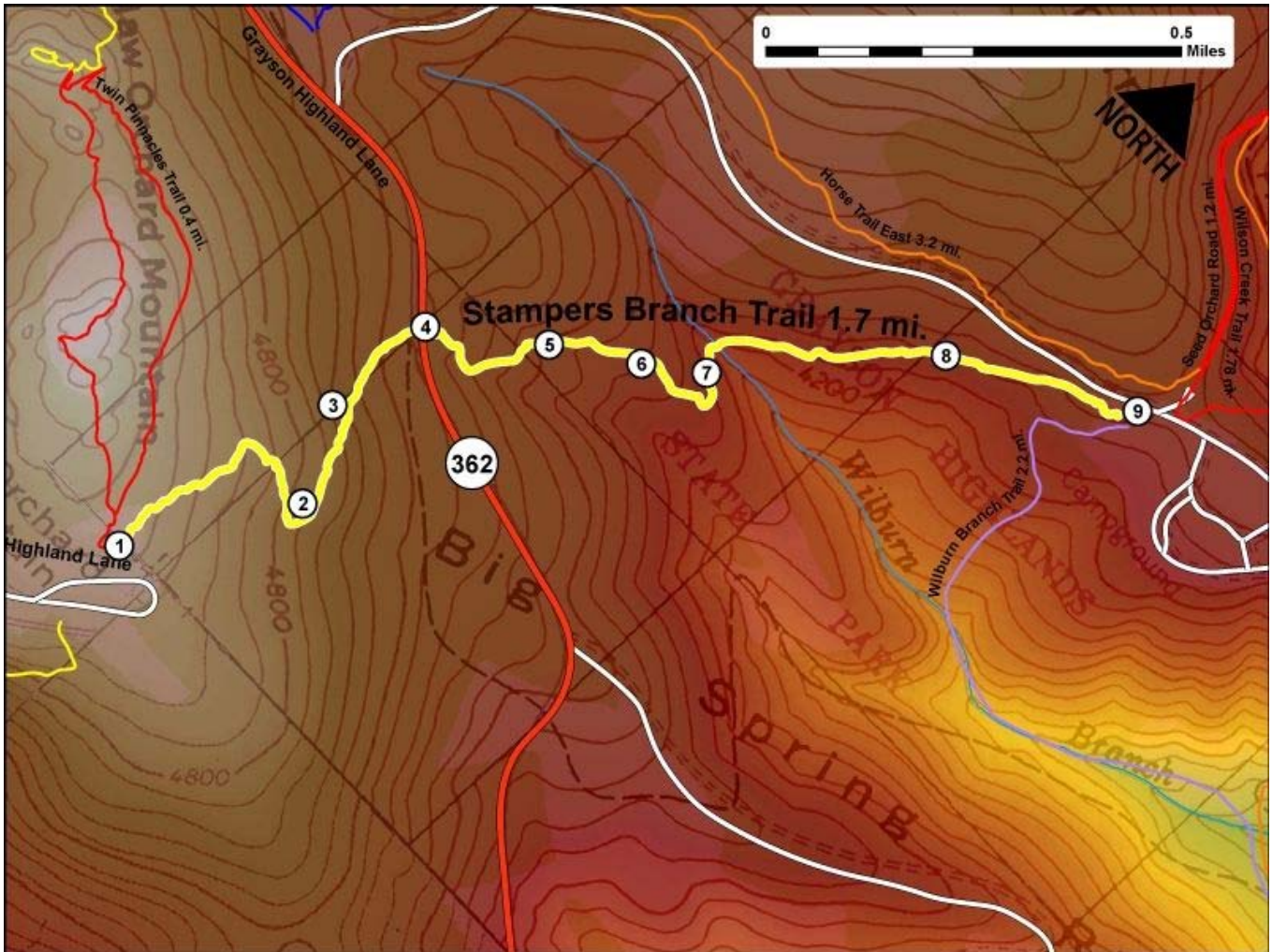


Printed from VirginiaOutdoors.net
Grayson Highlands State Park
Stampers Branch Trail Map - Blaze Color: Yellow



1. GPS: Lat. 36° 37.5, Lon. -81° 30.05
Stampers Branch Trailhead (south) near Visitor Center – Elev. 4439'
2. GPS: Lat. 36° 37.67, Lon. -81° 29.927
On Trail – this portion of the trail features numerous ferns
3. GPS: Lat. 36° 37.763, Lon. -81° 29.993
On Trail
4. GPS: Lat. 36° 37.89, Lon. -81° 29.985
Intersection with Grayson Highland Lane (paved) – Elev. 4685'
5. GPS: Lat. 36° 37.972, Lon. -81° 29.858
On Trail
6. GPS: Lat. 36° 38.028, Lon. -81° 29.758
Shelter alongside trail – trail passes through thickets of Rhododendron
7. GPS: Lat. 36° 38.072, Lon. -81° 29.692
Bridge over creek – Elev. 4361'
8. GPS: Lat. 36° 38.267, Lon. -81° 29.495
On Trail
9. GPS: Lat. 36° 38.373, Lon. -81° 29.272
Stampers Branch Trailhead (north). Amphitheater and Country Store nearby.

This project made possible in part by a grant from:

