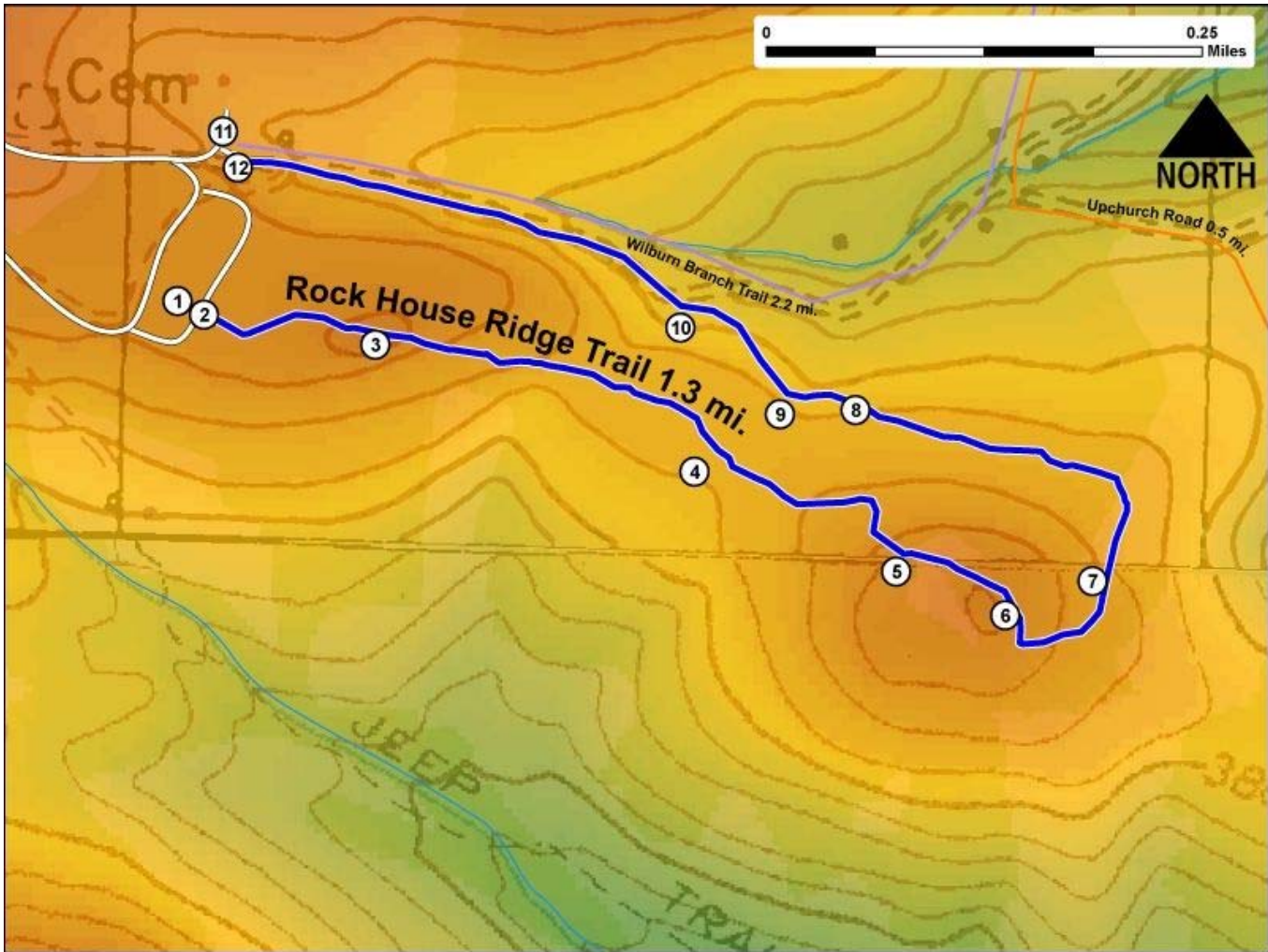


Printed from VirginiaOutdoors.net
Grayson Highlands State Park
Rock House Ridge Trail Map - Blaze Color: Blue



1. GPS: Lat. 36° 37.39, Lon. -81° 30.07
Listening Rock Trailhead near Visitor Center (East) – Elev. 4875'
2. GPS: Lat. 36° 37.292, Lon. -81° 30.228
On Trail
3. GPS: Lat. 36° 37.135, Lon. -81° 30.403
On Trail
4. GPS: Lat. 36° 37.107, Lon. -81° 30.452
Overlook – Caution Steep and Slippery on trail – Elev. 4608'
5. GPS: Lat. 36° 37.207, Lon. -81° 30.3
On Trail
6. GPS: Lat. 36° 37.277, Lon. -81° 30.072
On Trail
7. GPS: Lat. 36° 37.383, Lon. -81° 29.992
On Trail
8. GPS: Lat. 36° 37.407, Lon. -81° 30.032
Listening Rock Trailhead (West)
9. GPS: Lat. 36° 37.577, Lon. -81° 28.433
Bench
10. GPS: Lat. 36° 37.618, Lon. -81° 28.497
Trail converges with Mountain Bike Trail
11. GPS: Lat. 36° 37.703, Lon. -81° 28.783
Homestead Area Access
12. GPS: Lat. 36° 37.695, Lon. -81° 28.774
Rock House Ridge Trailhead (North of Parking Area)

This project made possible in part by a grant from:

