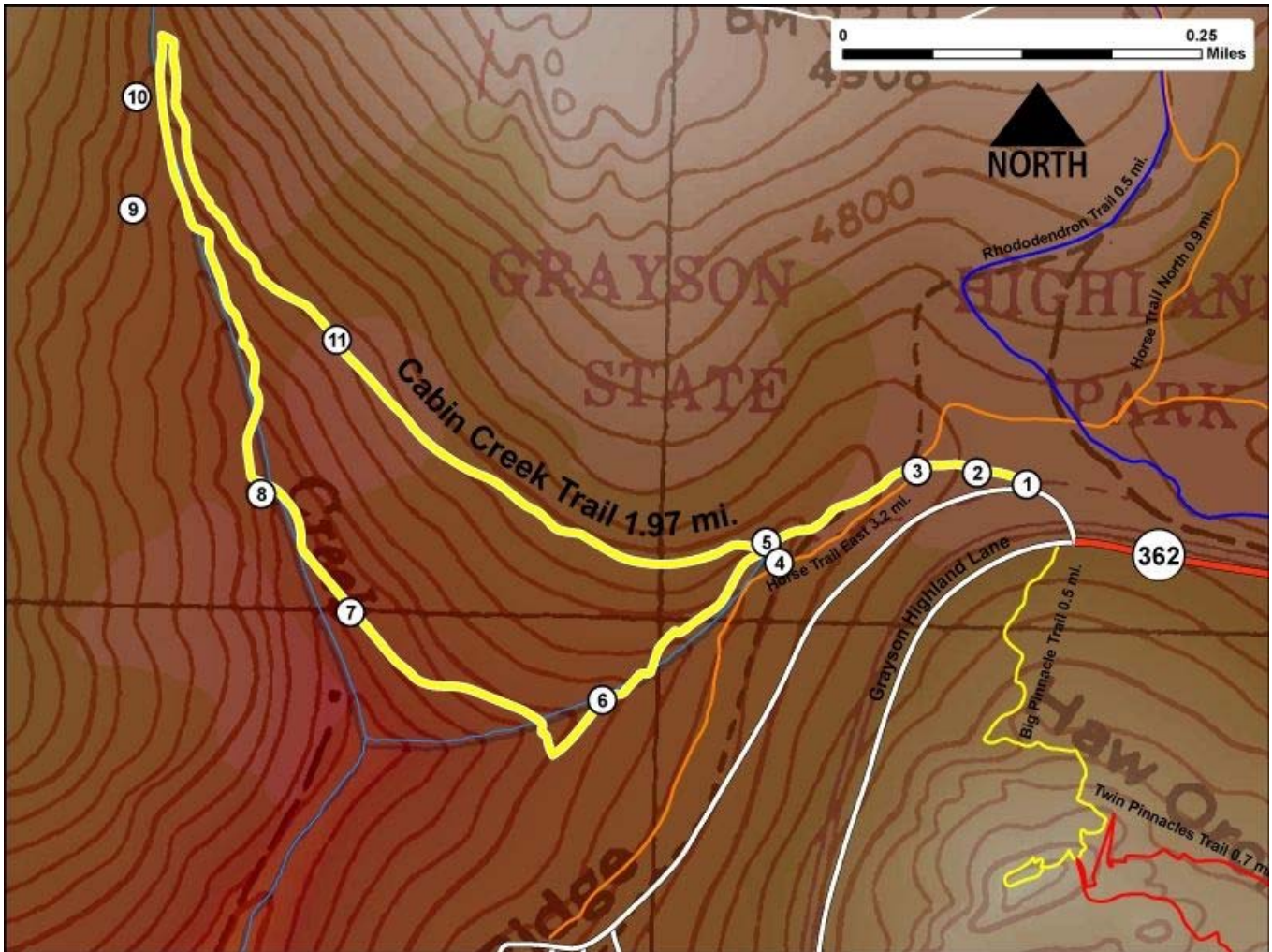


Printed from VirginiaOutdoors.net  
**Grayson Highlands State Park**  
**Cabin Creek Trail Map - Blaze Color: Yellow**



1. GPS: Lat. 36° 38.029, Lon. -81° 30.589  
Cabin Creek Trailhead
2. GPS: Lat. 36° 38.035, Lon. -81° 30.627  
Edge of field
3. GPS: Lat. 36° 38.035, Lon. -81° 30.672  
Trail crosses Horse Trail
4. GPS: Lat. 36° 37.977, Lon. -81° 30.773  
Trail crosses Cabin Creek for first time
5. GPS: Lat. 36° 37.988, Lon. -81° 30.783  
Beginning of Loop proceed to left – Elev. 4596' Branch to South closely follows Cabin Creek and at times can be wet and muddy
6. GPS: Lat. 36° 37.89, Lon. -81° 30.903  
Trail crosses branch – Elev. 4544'
7. GPS: Lat. 36° 37.938, Lon. -81° 31.095  
Shelter on trail
8. GPS: Lat. 36° 38.008, Lon. -81° 31.165  
Small bridge and a good view of the falls – Elev. 4177'
9. GPS: Lat. 36° 38.178, Lon. -81° 31.268  
Intersection with Overlook connector to North and continuation of loop turns South
10. GPS: Lat. 36° 38.247, Lon. -81° 31.268  
Falls Overlook and End of Trail – Elev. 4678' – Trail form loop to here is steep and narrow so hikers are advised to use caution
11. GPS: Lat. 36° 38.103, Lon. -81° 31.112  
On East branch of loop

This project made possible in part by a grant from:

