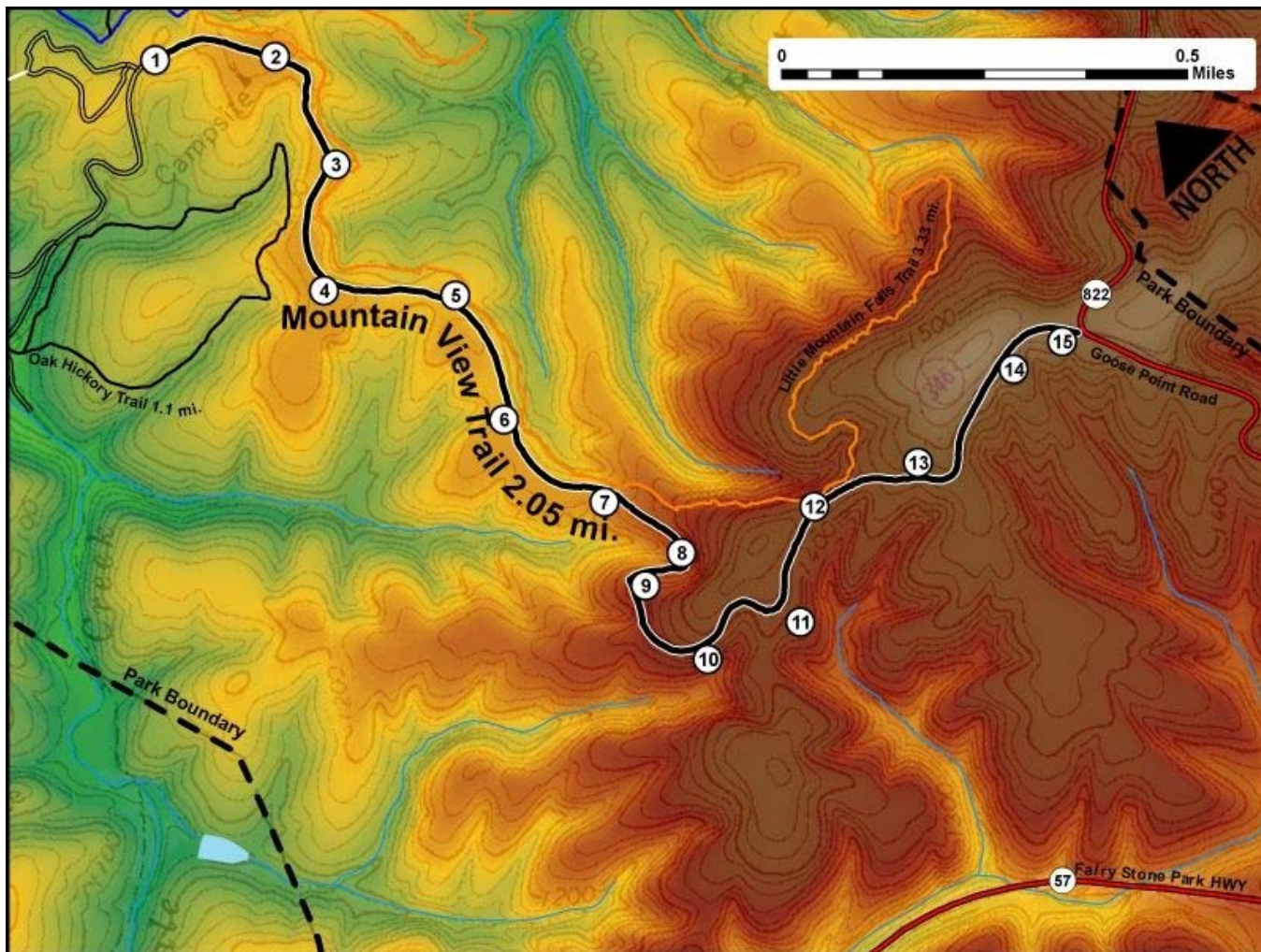


Printed from VirginiaOutdoors.net
Fairy Stone State Park
Mountain View Trail Map - Blaze Color:



1. GPS: Lat. 36° 47.592, Lon. -80° 6.45
Mountain View Trailhead (North)
2. GPS: Lat. 36° 47.505, Lon. -80° 6.332
On Trail
3. GPS: Lat. 36° 47.377, Lon. -80° 6.373
Access to Little Mountain Falls Trail
4. GPS: Lat. 36° 47.288, Lon. -80° 6.502
On Trail
5. GPS: Lat. 36° 47.187, Lon. -80° 6.38
On Trail
6. GPS: Lat. 36° 47.055, Lon. -80° 6.448
On Trail
7. GPS: Lat. 36° 46.917, Lon. -80° 6.428
On Trail
8. GPS: Lat. 36° 46.82, Lon. -80° 6.402
On Trail
9. GPS: Lat. 36° 46.822, Lon. -80° 6.467
Bench and Overlook on Trail at Interpretive Marker
10. GPS: Lat. 36° 46.718, Lon. -80° 6.475
On Trail
11. GPS: Lat. 36° 46.678, Lon. -80° 6.352
On Trail
12. GPS: Lat. 36° 46.757, Lon. -80° 6.232
Access to Little Mountain Falls Trail
13. GPS: Lat. 36° 46.713, Lon. -80° 6.092
On Trail
14. GPS: Lat. 36° 46.722, Lon. -80° 5.923
On Trail

15. GPS: Lat. 36° 46.702, Lon. -80° 5.838
Trail ends at Gate with access to SR 57 and Goose Point
This project made possible in part by a grant from:

