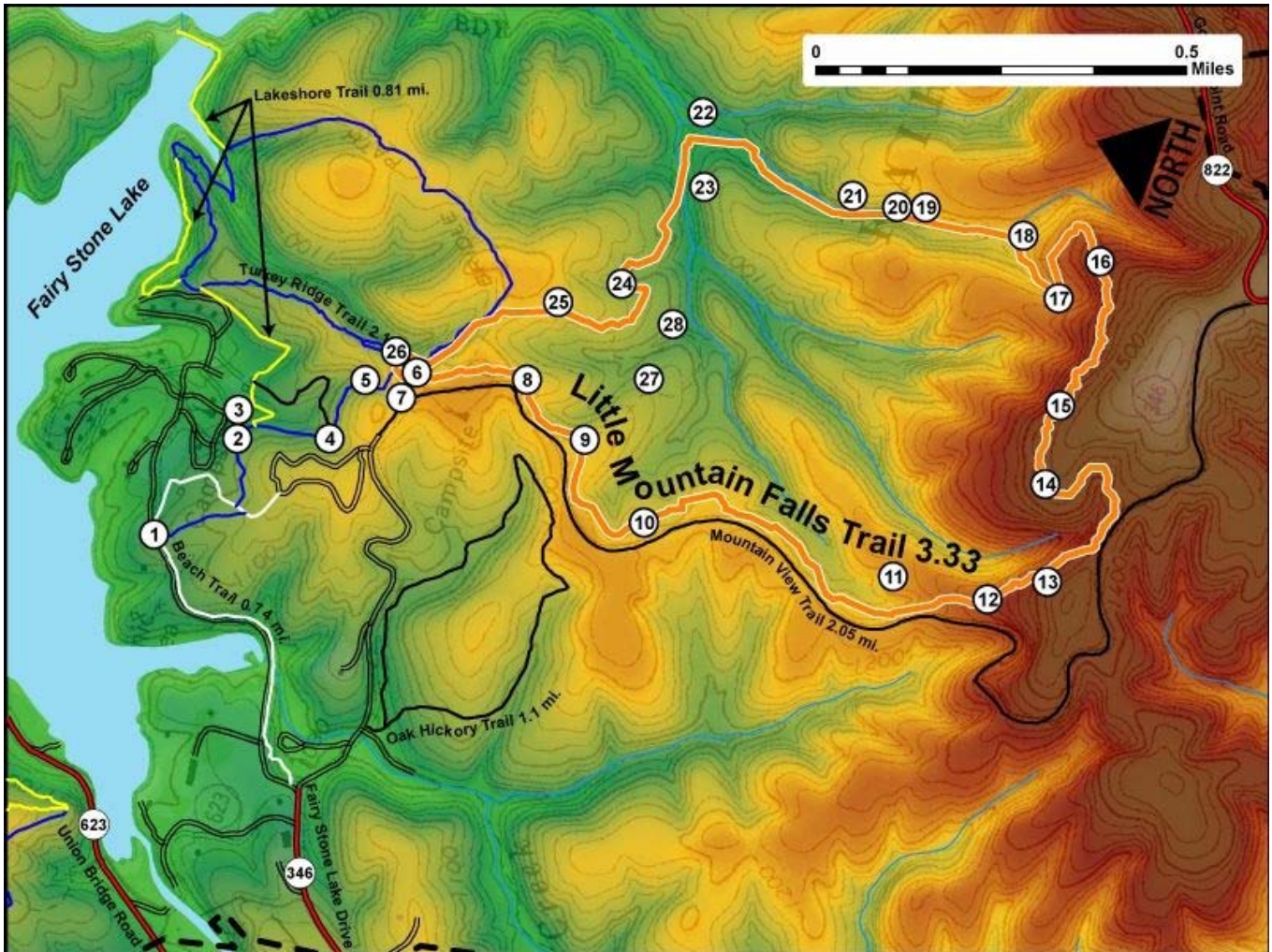


Printed from VirginiaOutdoors.net  
**Fairy Stone State Park**  
**Little Mountain Falls Trail Map - Blaze Color: Orange**



1. GPS: Lat. 36° 47.798, Lon. -80° 6.705  
Trailhead (North) at Intersection with Beach Trail
2. GPS: Lat. 36° 47.752, Lon. -80° 6.518  
Intersection with Cabin access and Lakeshore Trail
3. GPS: Lat. 36° 47.752, Lon. -80° 6.513  
Intersection cabin access and Lakeshore Trail – continue South to Little Mountain Falls and Turkey Ridge Trail
4. GPS: Lat. 36° 47.647, Lon. -80° 6.483  
Intersection with Lakeshore Connector – Little Mountain Falls and Turkey Ridge continue to South
5. GPS: Lat. 36° 47.632, Lon. -80° 6.385  
On Little Mountain Falls and Turkey Ridge Trails
6. GPS: Lat. 36° 47.593, Lon. -80° 6.365  
Intersection of Little Mountain Falls and Turkey Ridge Trails
7. GPS: Lat. 36° 47.593, Lon. -80° 6.363  
Intersection with Campground and Mountain View Trail access
8. GPS: Lat. 36° 47.455, Lon. -80° 6.3  
On Trail
9. GPS: Lat. 36° 47.367, Lon. -80° 6.352  
Trail emerges into field with a short loop to East of Main Trail
10. GPS: Lat. 36° 47.267, Lon. -80° 6.433  
On Trail
11. GPS: Lat. 36° 46.97, Lon. -80° 6.382  
On Trail
12. GPS: Lat. 36° 46.858, Lon. -80° 6.358  
On Trail
13. GPS: Lat. 36° 46.8, Lon. -80° 6.303  
On Trail
14. GPS: Lat. 36° 46.843, Lon. -80° 6.172  
On Trail

15. GPS: Lat. 36° 46.86, Lon. -80° 6.057  
Bench and Overlook on trail – this is the halfway point for this loop trail
16. GPS: Lat. 36° 46.877, Lon. -80° 5.84  
On Trail
17. GPS: Lat. 36° 46.907, Lon. -80° 5.912  
On Trail
18. GPS: Lat. 36° 46.972, Lon. -80° 5.845  
Creek crossing
19. GPS: Lat. 36° 47.092, Lon. -80° 5.858  
Creek crossing
20. GPS: Lat. 36° 47.122, Lon. -80° 5.872  
Railing along trail and overlook of falls
21. GPS: Lat. 36° 47.177, Lon. -80° 5.88  
Creek crossing
22. GPS: Lat. 36° 47.372, Lon. -80° 5.853  
On Trail
23. GPS: Lat. 36° 47.342, Lon. -80° 5.945  
Creek crossing and intersection with short side loop
24. GPS: Lat. 36° 47.392, Lon. -80° 6.12  
On Trail
25. GPS: Lat. 36° 47.453, Lon. -80° 6.178  
On Trail
26. GPS: Lat. 36° 47.61, Lon. -80° 6.33  
Intersection of Little Mountain Falls and Turkey Ridge Trails
27. GPS: Lat. 36° 47.322, Lon. -80° 6.235  
On short loop
28. GPS: Lat. 36° 47.318, Lon. -80° 6.148  
Short loop crosses creek

This project made possible in part by a grant from:

