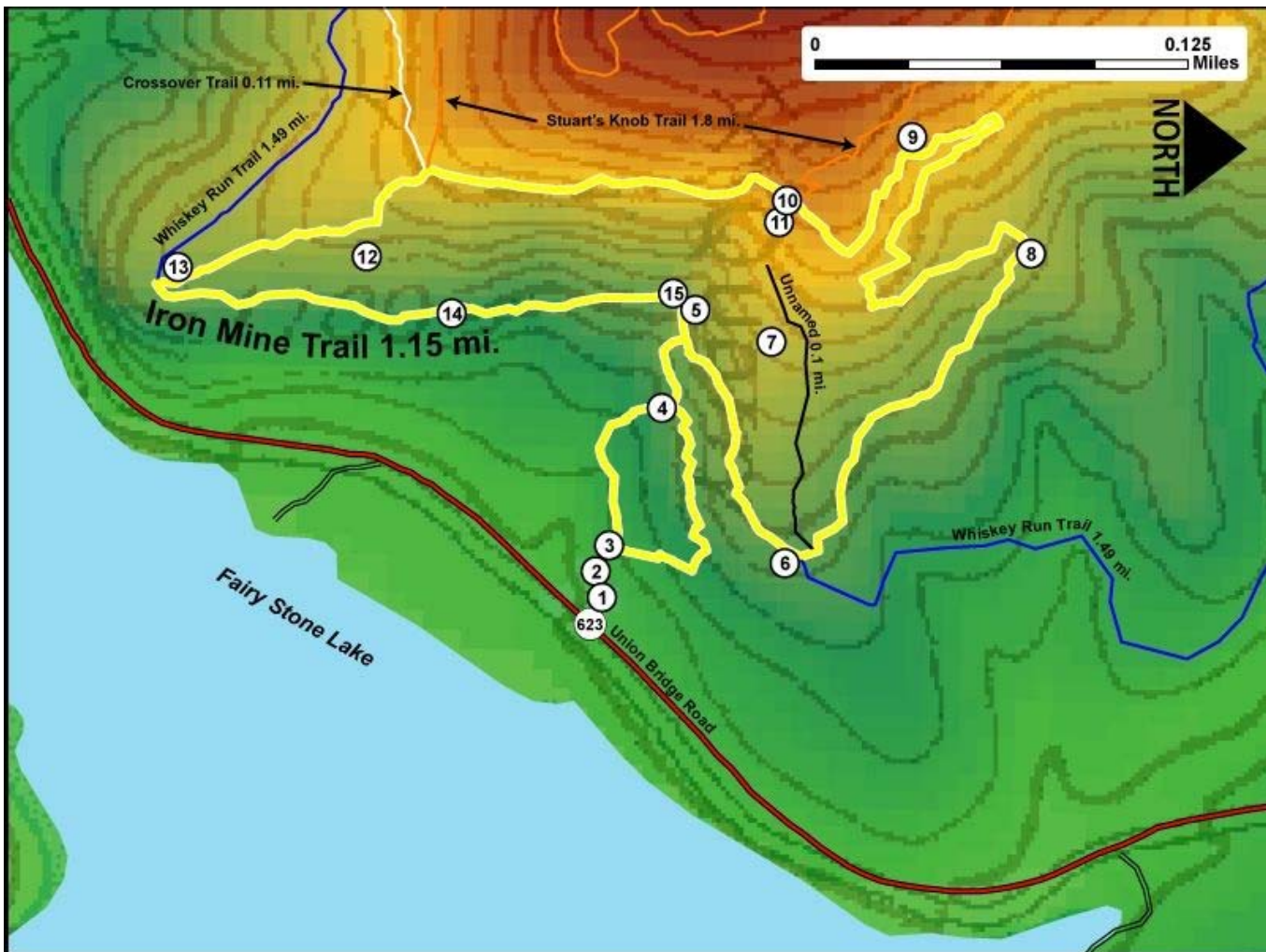


Printed from VirginiaOutdoors.net  
**Fairy Stone State Park**  
**Iron Mine Trail Map - Blaze Color: Yellow**



1. GPS: Lat. 36° 47.91, Lon. -80° 7.013  
Trailhead Parking for Stuart's Knob Trail System
2. GPS: Lat. 36° 47.909, Lon. -80° 7.02  
Iron Mine Trailhead and access to Stuart's Knob Trail System
3. GPS: Lat. 36° 47.912, Lon. -80° 7.032  
Fork in trail – Both trails create a small loop
4. GPS: Lat. 36° 47.927, Lon. -80° 7.082  
Fork in trail – North continues on Iron Mine Trail
5. GPS: Lat. 36° 47.935, Lon. -80° 7.12  
Fork in Trail – Large loop begins here – both directions continue on trail – Former mine site here
6. GPS: Lat. 36° 47.963, Lon. -80° 7.027  
Intersection with two other trails – West to .10 miles to mine site – East to Whiskey Run Trail – North remains on Iron Mine
7. GPS: Lat. 36° 47.958, Lon. -80° 7.107  
Historic site and structure at Mine site
8. GPS: Lat. 36° 48.033, Lon. -80° 7.145  
Difficult portion of Iron Mine Trail
9. GPS: Lat. 36° 47.998, Lon. -80° 7.182  
Bench on trail at .5 mile marker
10. GPS: Lat. 36° 47.962, Lon. -80° 7.158  
Intersection with Upper Stuart's Knob Trailhead (North)
11. GPS: Lat. 36° 47.96, Lon. -80° 7.15  
Intersection with Upper Stuart's Knob Trailhead (South) and Crossover Trailhead (East) – Iron Mine continues with steep inclines and switchbacks
12. GPS: Lat. 36° 47.84, Lon. -80° 7.135  
Benches and Overlook on Iron Mine Trail
13. GPS: Lat. 36° 47.785, Lon. -80° 7.13  
Benches and Overlook on Iron Mine Trail and intersection with Whiskey Run Trailhead (South)
14. GPS: Lat. 36° 47.865, Lon. -80° 7.115  
On Iron Mine Trail

15. GPS: Lat. 36° 47.932, Lon. -80° 7.122  
Trail turns sharply at gates

This project made possible in part by a grant from:

