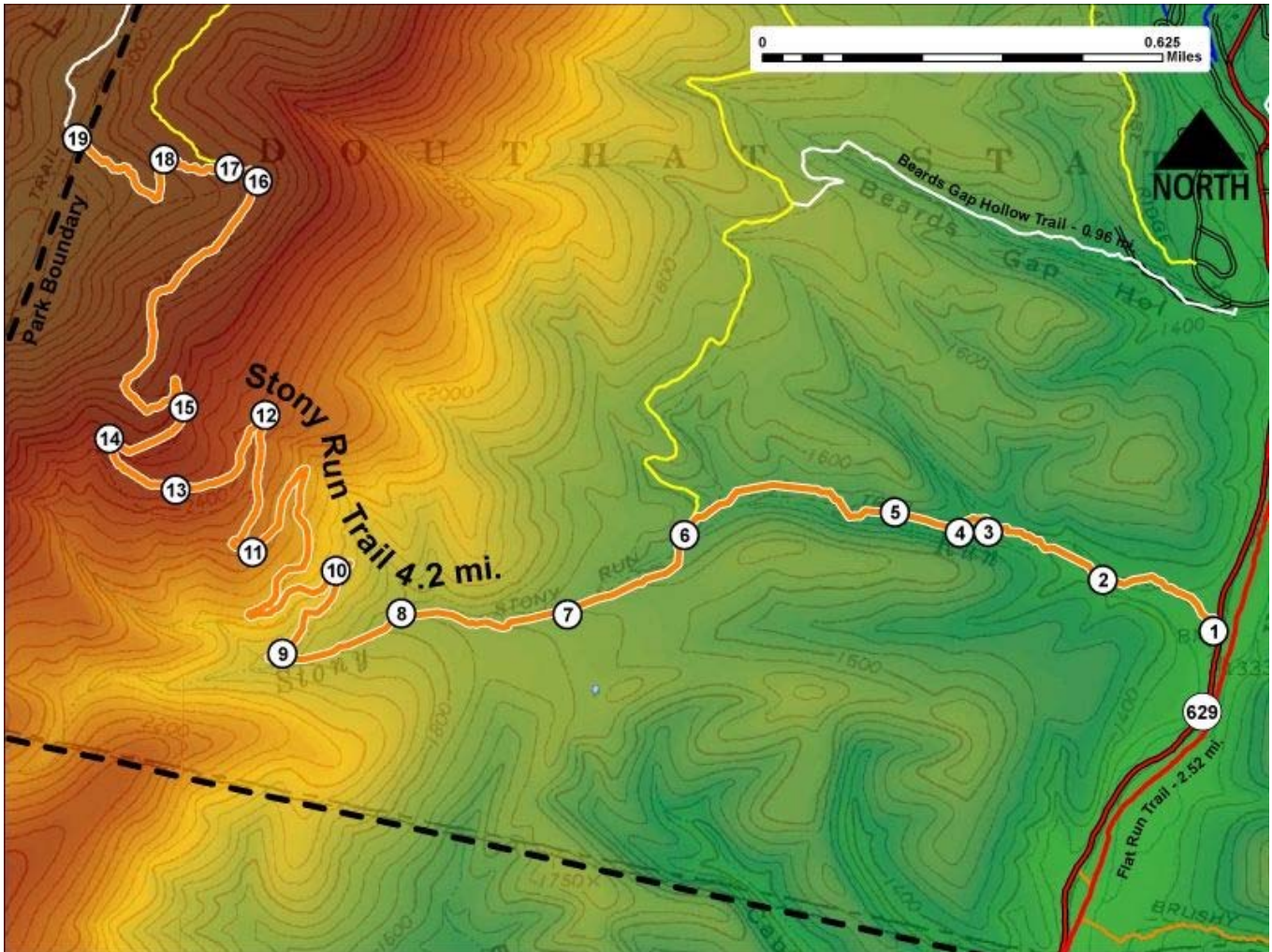


Printed from VirginiaOutdoors.net
Douthat State Park
Stony Run Trail Map - Blaze Color: Orange



1. GPS: Lat. 37° 53.267, Lon. -79° 48.218
Stony Run Trailhead (East) and Trailhead Parking
2. GPS: Lat. 37° 53.343, Lon. -79° 48.41
Trail crosses Stony Run Creek
3. GPS: Lat. 37° 53.397, Lon. -79° 48.61
Trail crosses Stony Run Creek several times
4. GPS: Lat. 37° 53.395, Lon. -79° 48.657
Trail crosses Stony Run Creek
5. GPS: Lat. 37° 53.422, Lon. -79° 48.768
Trail crosses Stony Run Creek
6. GPS: Lat. 37° 53.387, Lon. -79° 49.128
Locust Gap Trailhead (South) Intersects with Stony Run Trail - .9 miles from Parking Area
7. GPS: Lat. 37° 53.277, Lon. -79° 49.327
On Trail
8. GPS: Lat. 37° 53.275, Lon. -79° 49.612
On Trail
9. GPS: Lat. 37° 53.218, Lon. -79° 49.815
Trail crosses creek and passes through thickets of rhododendron – Stony Run Falls are nearby
10. GPS: Lat. 37° 53.332, Lon. -79° 49.725
on switchbacks—going uphill
11. GPS: Lat. 37° 53.355, Lon. -79° 49.868
on switchbacks
12. GPS: Lat. 37° 53.542, Lon. -79° 49.85
on switchbacks
13. GPS: Lat. 37° 53.438, Lon. -79° 50.002
on switchbacks
14. GPS: Lat. 37° 53.507, Lon. -79° 50.117
on switchbacks

15. GPS: Lat. 37° 53.55, Lon. -79° 49.99

switchbacks stop

16. GPS: Lat. 37° 53.858, Lon. -79° 49.873

on stoney run

17. GPS: Lat. 37° 53.875, Lon. -79° 49.918

Tuscarora Trailhead (South) – Intersection with Stony Run Trail

18. GPS: Lat. 37° 53.887, Lon. -79° 50.03

On Trail

19. GPS: Lat. 37° 53.913, Lon. -79° 50.179

Stony Run Trailhead (West) – Intersection with Middle Mountain Trail

This project made possible in part by a grant from:

