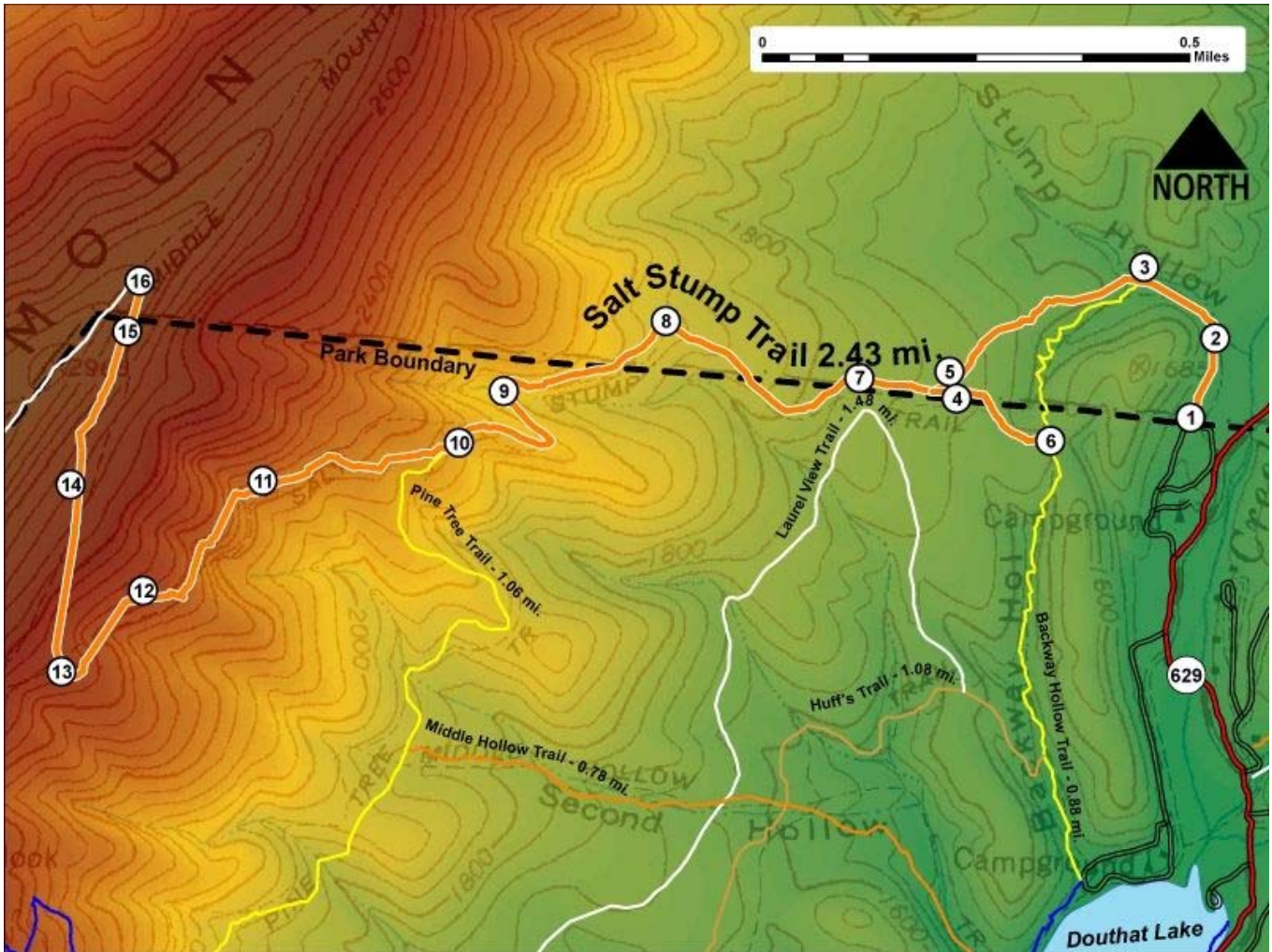


Printed from VirginiaOutdoors.net
Douthat State Park
Salt Stump Trail Map - Blaze Color: Orange



1. GPS: Lat. 37° 54.994, Lon. -79° 47.811
Salt Stump Trailhead (East) – Located North of Cabin Area and West of SR629
2. GPS: Lat. 37° 55.076, Lon. -79° 47.78
Trail crosses Salt Stump Creek
3. GPS: Lat. 37° 55.147, Lon. -79° 47.873
Backway Hollow Trailhead (North) – Intersection with Salt Stump Trail
4. GPS: Lat. 37° 55.027, Lon. -79° 48.112
Flat area with many wild blueberry plants
5. GPS: Lat. 37° 55.027, Lon. -79° 48.121
Intersection with Salt Stump Connector Trail
6. GPS: Lat. 37° 54.969, Lon. -79° 47.99
Backway Hollow Trail Intersection with Salt Stump Connector Trail
7. GPS: Lat. 37° 55.03, Lon. -79° 48.237
This portion of trail is rocky and difficult – Park Boundary Marker
8. GPS: Lat. 37° 55.085, Lon. -79° 48.487
On Trail
9. GPS: Lat. 37° 55.012, Lon. -79° 48.693
Trail crosses creek
10. GPS: Lat. 37° 54.958, Lon. -79° 48.75
Pine Tree Trailhead (North) – Intersection with Salt Stump Trail
11. GPS: Lat. 37° 54.917, Lon. -79° 49.002
On Trail
12. GPS: Lat. 37° 54.803, Lon. -79° 49.153
On Trail
13. GPS: Lat. 37° 54.72, Lon. -79° 49.257
Sharp switchback in trail
14. GPS: Lat. 37° 54.91, Lon. -79° 49.248
On Trail

15. GPS: Lat. 37° 55.067, Lon. -79° 49.178

Ice storm sign

16. GPS: Lat. 37° 55.118, Lon. -79° 49.163

Salt Stump Trailhead (West) –Intersection with Middle Mountain Trail

This project made possible in part by a grant from:

