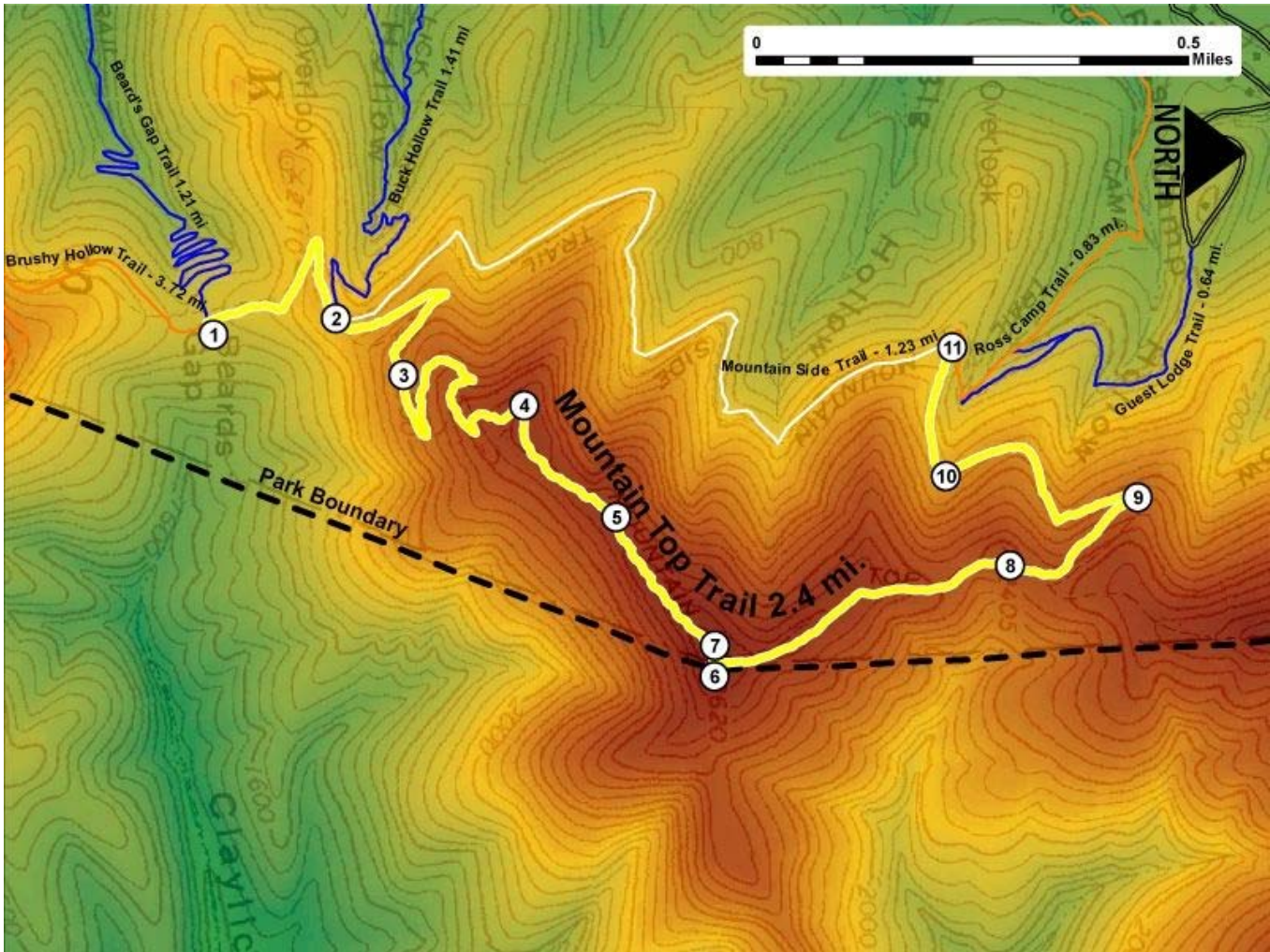


Printed from VirginiaOutdoors.net
Douthat State Park
Mountain Top Trail Map - Blaze Color: Yellow



1. GPS: Lat. 37° 53.854, Lon. -79° 47.204
Mountain Top Trailhead (South) Intersection with Beard's Gap and Brushy Hollow Trails
2. GPS: Lat. 37° 53.976, Lon. -79° 47.209
Intersection with Buck Hollow and Mountain Side Trails
3. GPS: Lat. 37° 54.045, Lon. -79° 47.138
Switchbacks – Elev. 2200'
4. GPS: Lat. 37° 54.168, Lon. -79° 47.102
Top of switchbacks
5. GPS: Lat. 37° 54.262, Lon. -79° 46.962
Trail follows ridge line
6. GPS: Lat. 37° 54.363, Lon. -79° 46.776
Trail reaches highest point – Elev. 2620'
7. GPS: Lat. 37° 54.363, Lon. -79° 46.78
Intersection with George Washington National Forest Trail — survey marker here indicates park boundary
8. GPS: Lat. 37° 54.659, Lon. -79° 46.907
On Trail – overlook of lake near by Elev. 2400'
9. GPS: Lat. 37° 54.787, Lon. -79° 46.996
Switchback at northernmost point on trail
10. GPS: Lat. 37° 54.593, Lon. -79° 47.019
On Trail - narrow and rocky
11. GPS: Lat. 37° 54.595, Lon. -79° 47.183
Mountain Top Trailhead (North) and intersection with Ross Camp and Mountain Side Trails

This project made possible in part by a grant from:

